

SHADOW PUPPET THEATRE

ASSEMBLY INSTRUCTIONS

YOU WILL NEED:



Craft Knife



Masking Tape



Light Source



Thin White Paper
(Printer paper, wax paper or
parchment paper will all work)



Cardboard Box

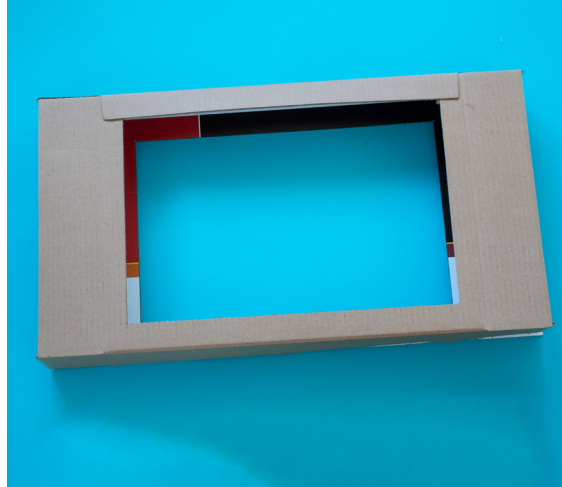


SHADOW PUPPET THEATRE

INSTRUCTIONS:



1. Find a box that fits your shadow puppets comfortably. TIP: Recycle a cereal box or a shipping box.



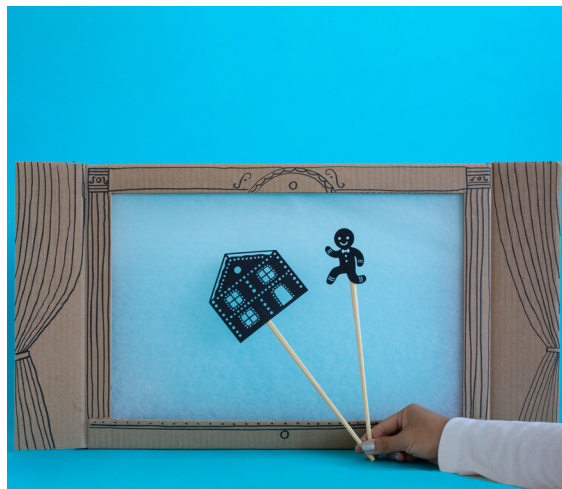
2. Cut out a rectangle from the front and back of the box. They should be the same size rectangle.



3. Cover the front rectangle cut out with thin white paper. Tape all the edges from the inside of the box so no light spills out. This will be your front stage.
4. Decorate your front stage. Use your imagination!




5. Position your box so your cardboard stage is facing the audience and place a light source (lamp, flashlight or a cell phone light) behind the box so the light shines through.



6. Crouch behind the box so you don't cast a shadow and start your shadow puppet show!

SHADOW PUPPETS


ASSEMBLY INSTRUCTIONS

 Cut on this line

YOU WILL NEED:

 Craft Knife

 Tape

 Wooden Skewers

 Light Source



SHADOW PUPPETS

1. Print this sheet out on HP Brochure Paper 180g (cardstock).
2. Cut out each silhouette. Your cut-out can be as simple as just the outline or as detailed as you want it.
3. Tape or glue a skewer, chopstick, straw or popsicle stick to the silhouette.
4. Shine a flashlight on your puppet to cast a shadow!

