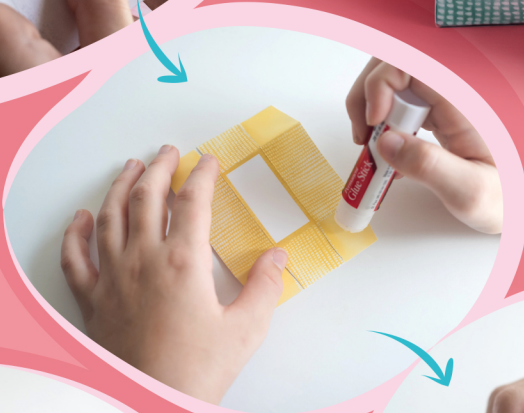


SUPPLIES

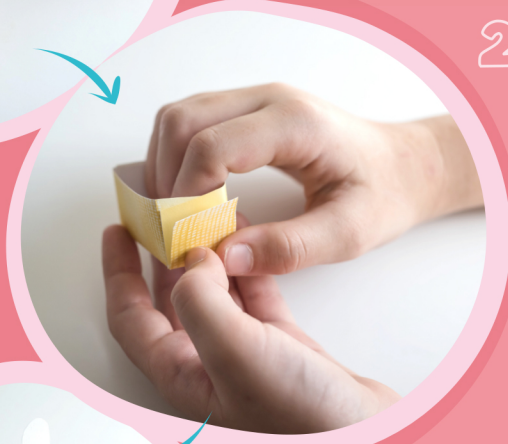
- Cardboard
- Scissors
- Glue stick or double sided tape

BUNNY CHOCOLATE EGG holder

1 Print in cardboard. Cut all parts and fold along the dashed lines.



2 Put together the basket by applying glue to the sides.



3 Attach bunny to the inside of the back of the basket.

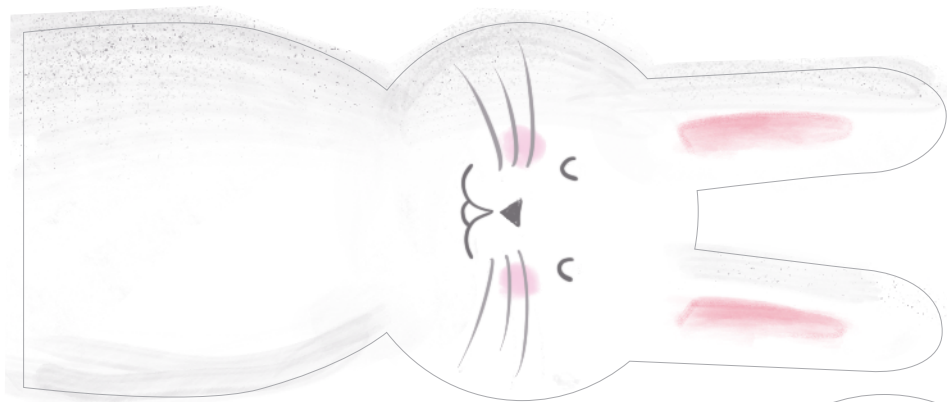


4 Wrap arms around the basket by applying glue only to the back of the paws.

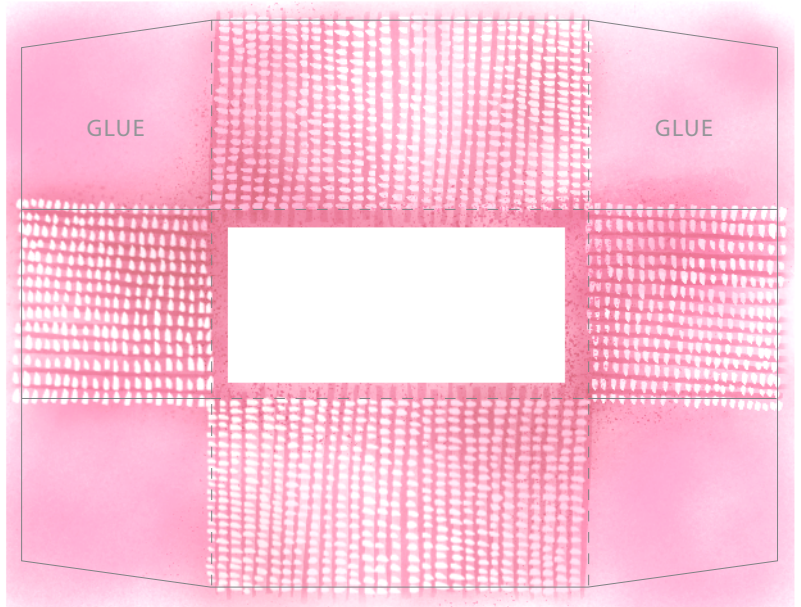
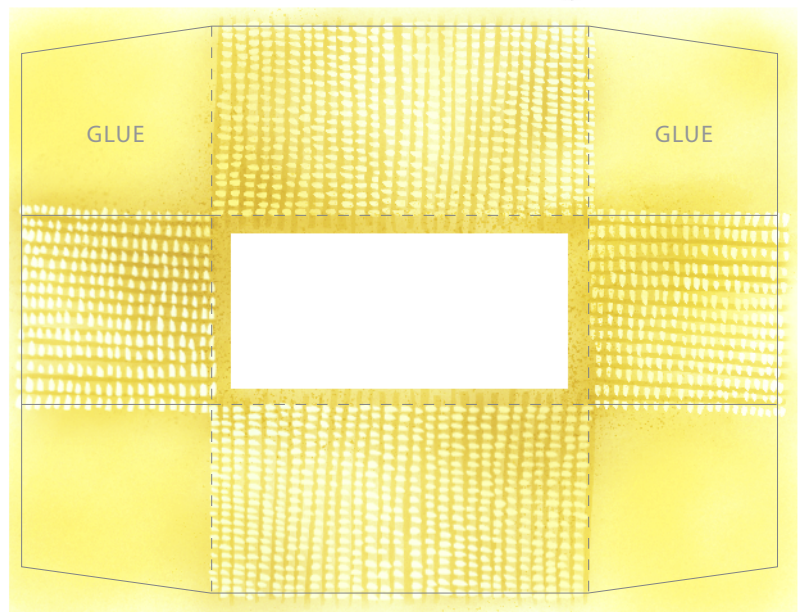
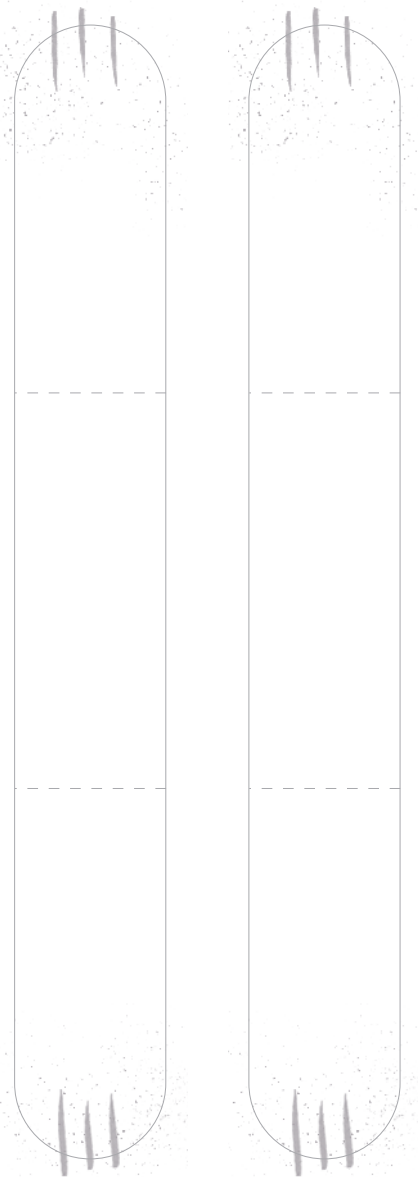
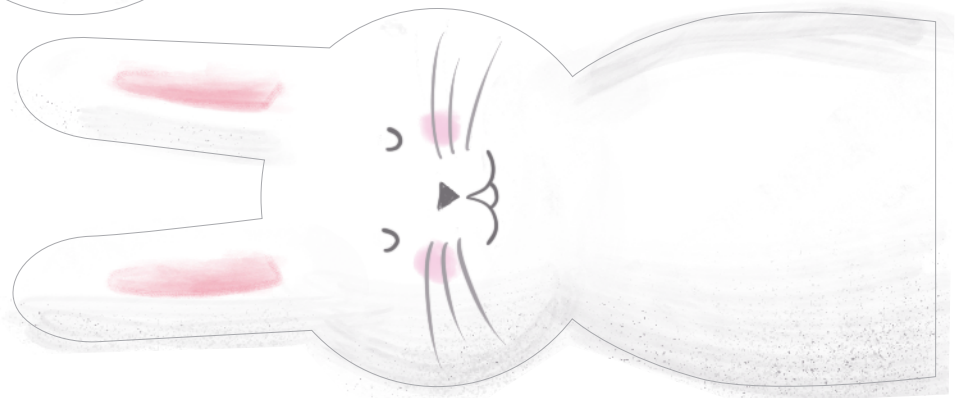


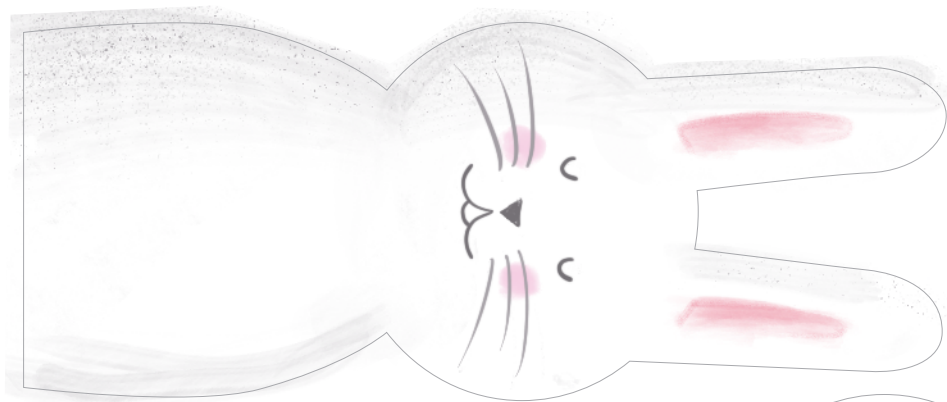
Fill it up with chocolate eggs!





Design by Dariela Cruz
WWW.MAMITALKS.COM





Design by Dariela Cruz
WWW.MAMITALKS.COM

