

WHY DO WE RECYCLE?

Did you know that a lot of what we throw away can be recycled? Like glass, aluminum, paper and plastic? Or even better yet, reused in some way?

When you throw something away, it doesn't just disappear.

“Where does it go,” you ask?

It depends. If you throw things into the garbage bin, much of that waste ends up in the environment as pollution, or gets stored away in our landfills for millions of years. On the other hand, if you place recyclable items in the bin for recycling, you are helping to give your waste a chance at becoming something new again!



While the best solution is to REFUSE or REDUCE things we only use once, it is not always possible. This is why recycling is so important for you, our environment and all the many animals that live with us on this planet!

When you recycle, you are helping to protect our communities and our limited natural resources. You are helping to reduce pollution in our air, water and land. You are helping to save energy and you are also contributing to the fight against global warming.



For a complete list of what items you can and cannot recycle, call the local Waste Management in your city or town! It is important to know what is recyclable so there is no contamination in the recycling bin.

Be sure to rinse food away and dry all recyclable containers before adding them to your blue or green bins.



Our planet needs your help! Be part of the solution. Reduce, reuse and recycle!

Sources: epa.gov, recyclingfacts.org, thought.co



WHY DO WE RECYCLE?

Here are a few not-so-fun facts about our waste that will make you think twice about throwing something away!

There are five GIANT islands of plastic floating in our oceans. The largest one is twice the size of Texas!

We throw away enough trash in a year to circle the earth 24 times!

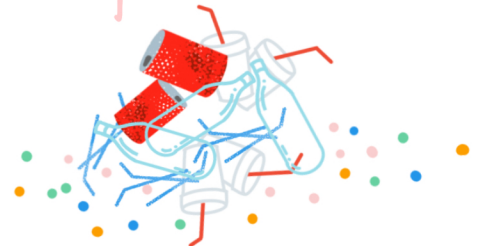
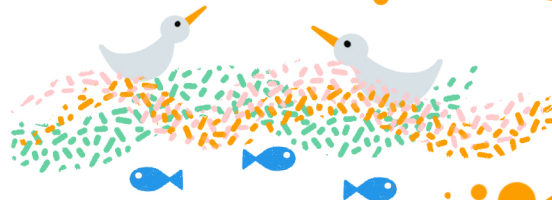
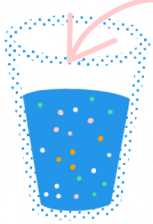
Each person, on average, produces about 4 pounds of waste every single day!

The United States creates more waste than any other country in the world.

Styrofoam will never decompose naturally in the environment.

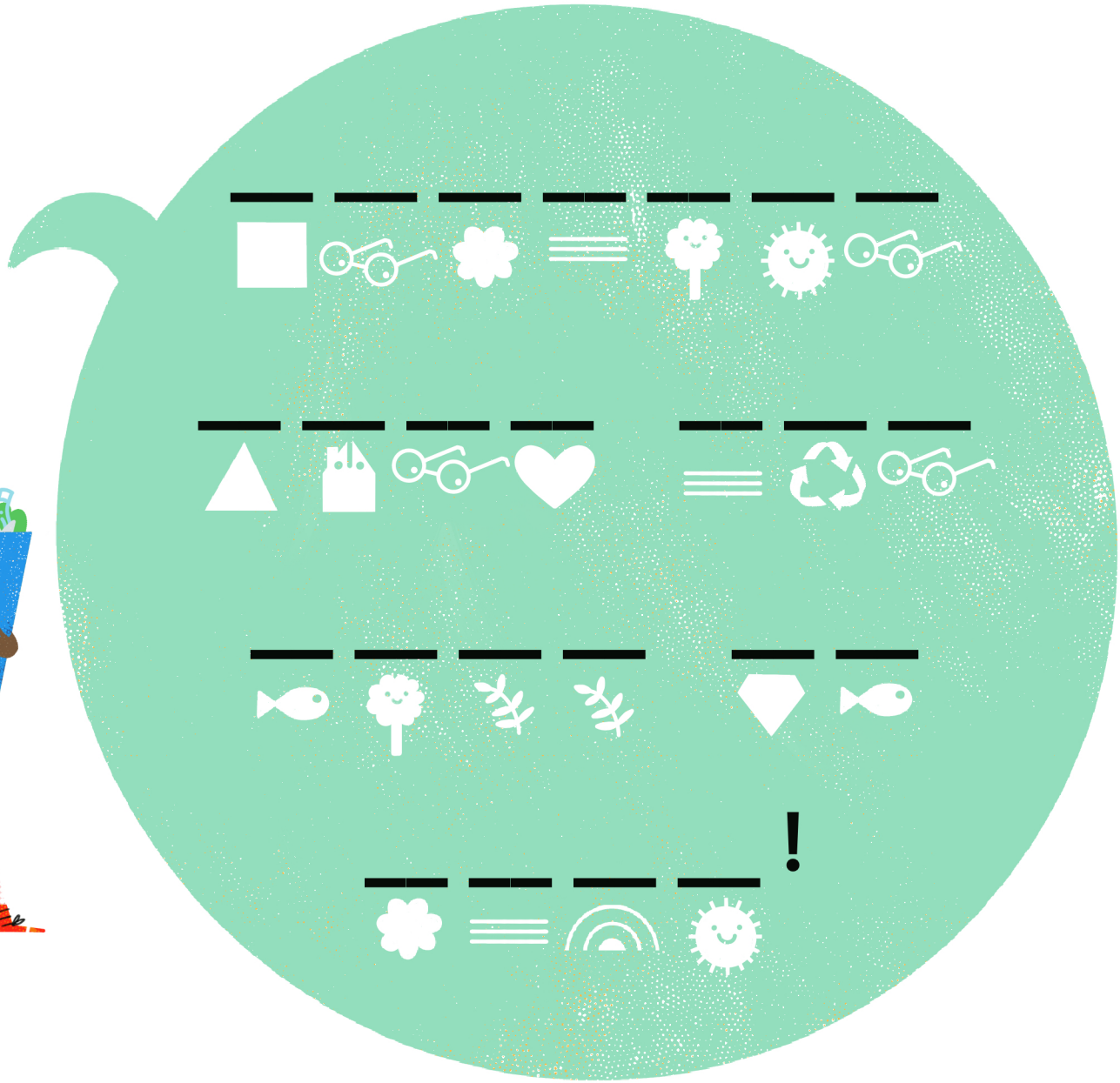
About 2.5 million plastic bottles are thrown away every hour!

Glass can take up to a million years to decompose in a landfill.



WHY ARE RECYCLING BINS OPTIMISTIC?

Decode this joke! Use the code key below to fill in the missing blanks!



A



B



C



E



F



H



L



N



O



R



S



T



U



Y