

perspective paper block

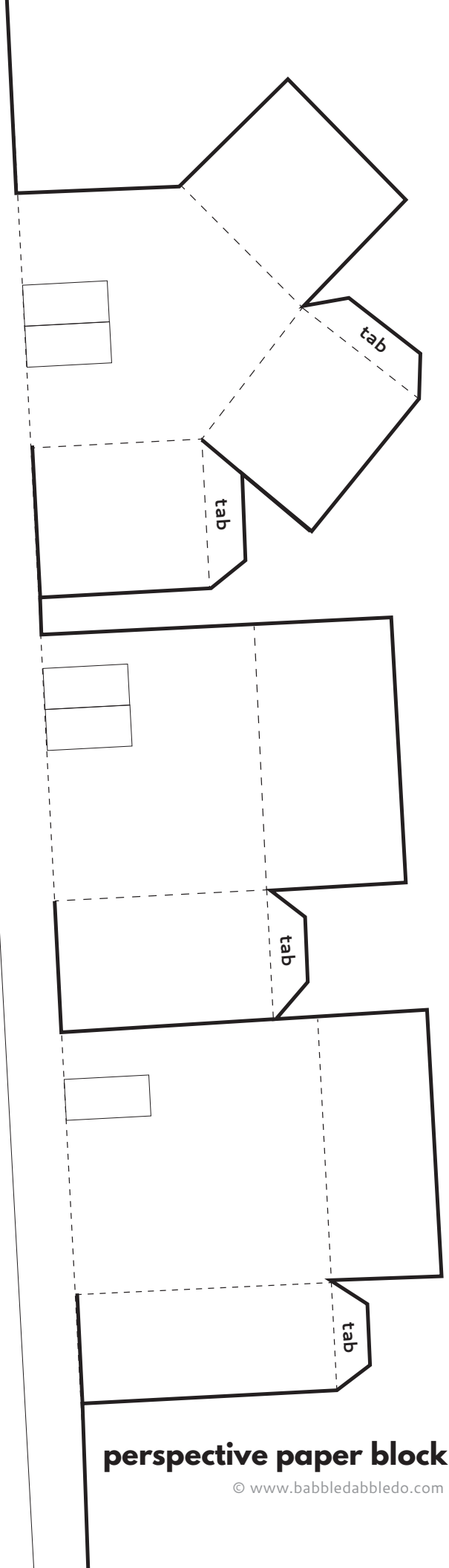
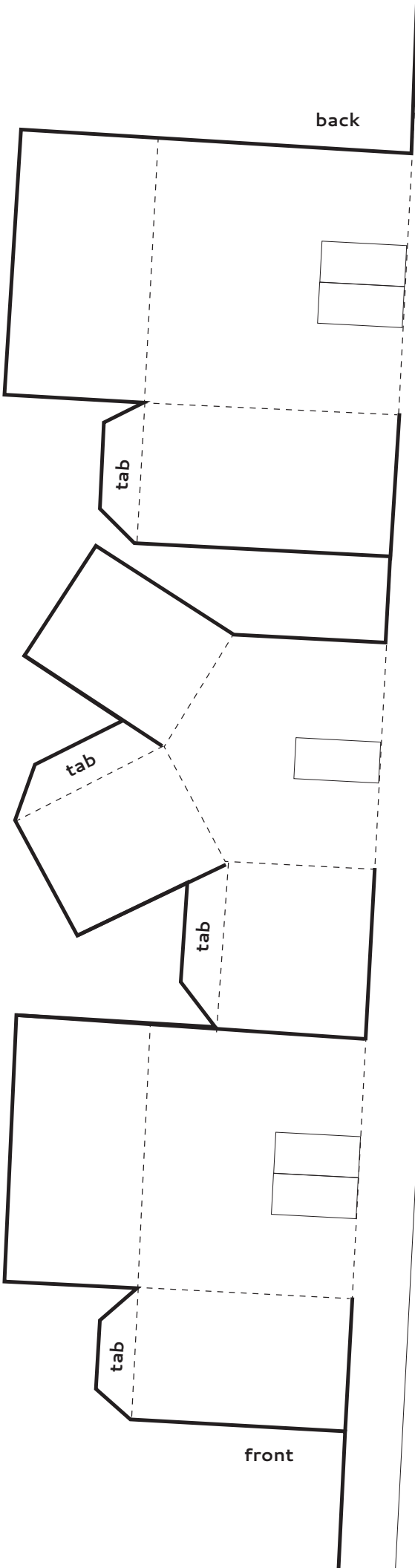
instructions:

1. Cut template along thick solid lines
2. Decorate front and side of each building
NOTE: The front of each building has a door on it.
3. Add color to the sidewalk and street if using the uncolored template.
4. Fold along dashed lines.
5. Add glue to tabs and assemble 3D buildings.
6. Fold buildings along "sidewalk" to make them stand up.
7. If desired use an additional sheet of paper to draw a backdrop scene to place at the end of the block.

what is perspective?

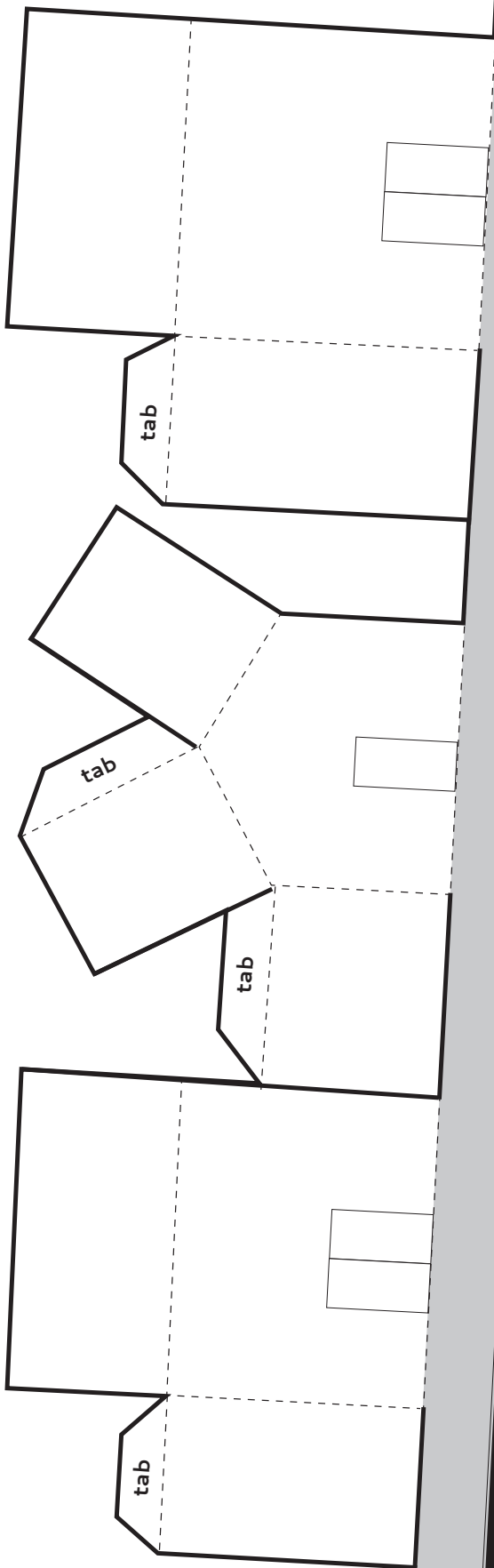
Perspective is a method of creating a scene through drawing that replicates how it looks in real life, with closer objects larger in scale and distant objects smaller. It uses a vanishing point to create an illusion of depth.

This perspective paper block is created so that if you look at it from the front the block, it appears to converge in the distance.

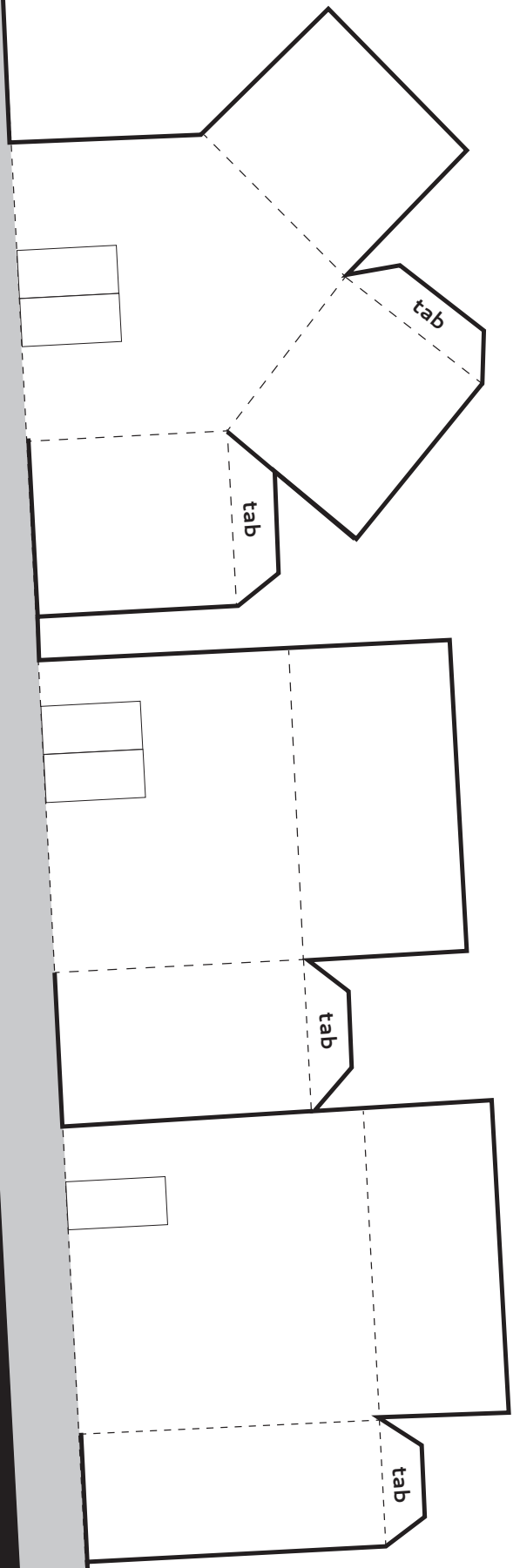


perspective paper block

© www.babbledabbledo.com

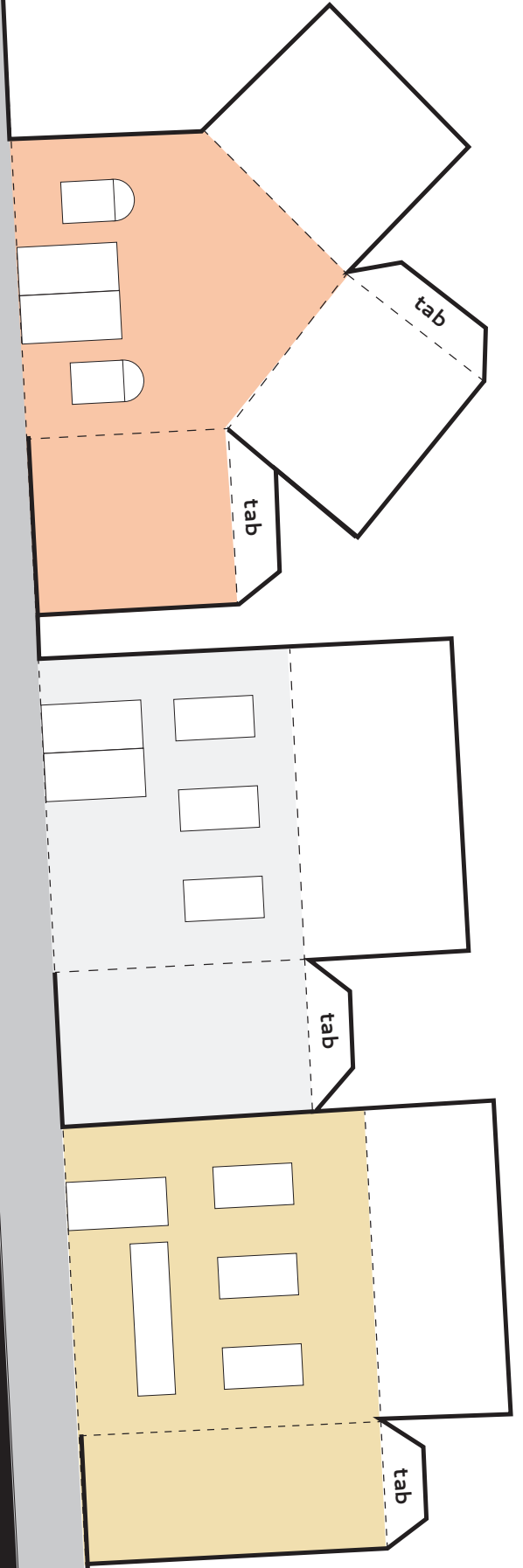
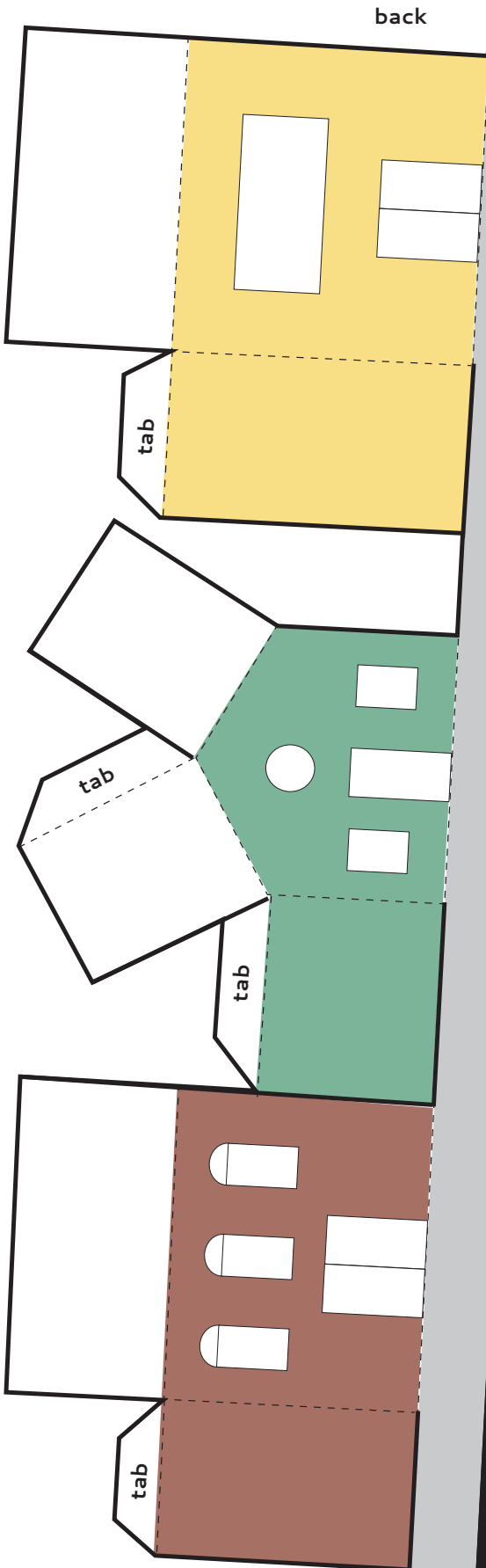


front



perspective paper block

© www.babbledabledo.com



perspective paper block

© www.babbledabbledo.com