

Welcome Baby Cake Toppers

By @jessdeaconworks

**For this craft
you'll need:**

- * Scissors or a craft knife
- * Glue (I use UHU all purpose)
- * A glue spreader or craft syringe (or a small folded piece of paper) to apply the glue.

~ optional ~

- * 2 x Drinking straws
- * 2 x wooden bbq skewers or cocktail sticks



Transform any cake into the perfect centrepiece for a welcome baby party with these fun cake toppers.

This printable includes the full alphabet for both decorations, so you can create your own message, or use the example shown.

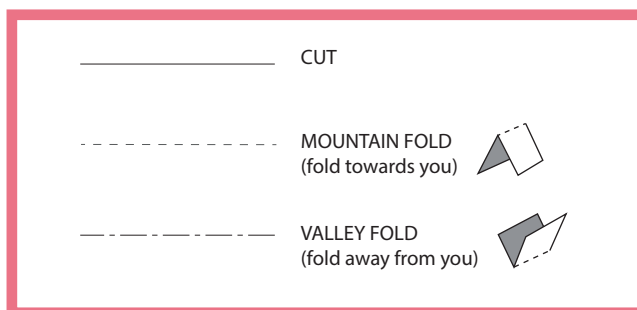
Welcome Baby Cake Toppers

By @jessdeaconworks

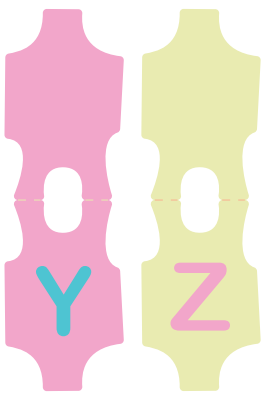
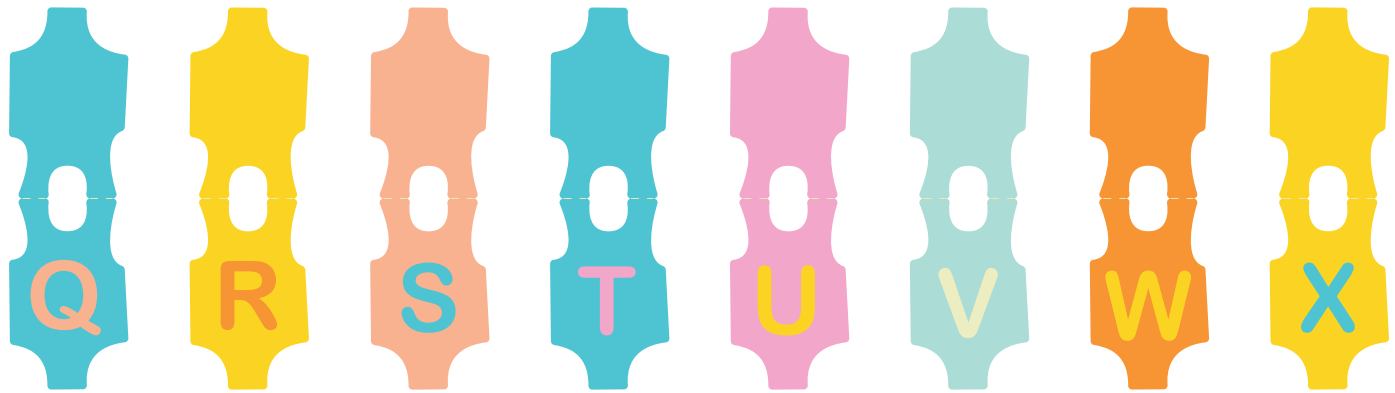
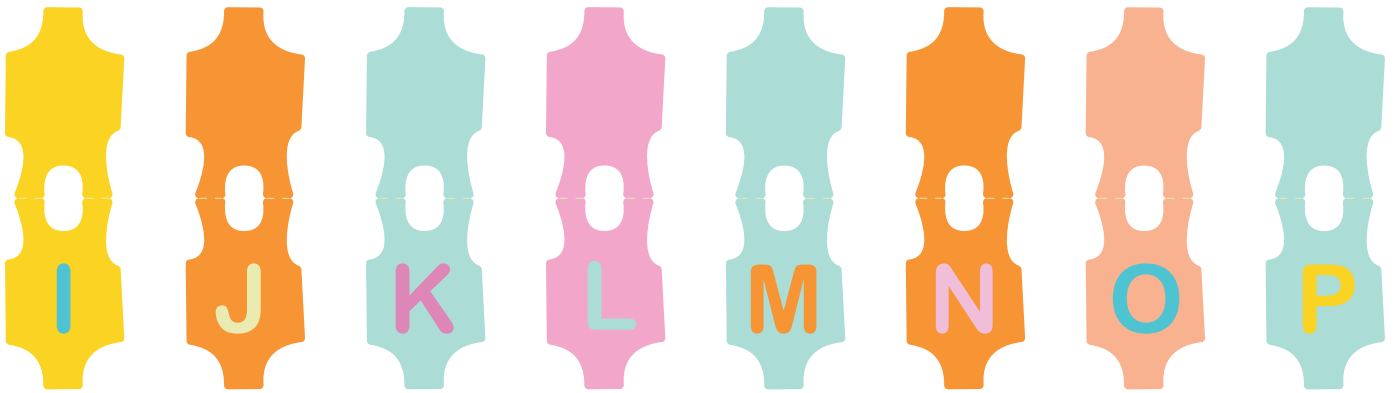
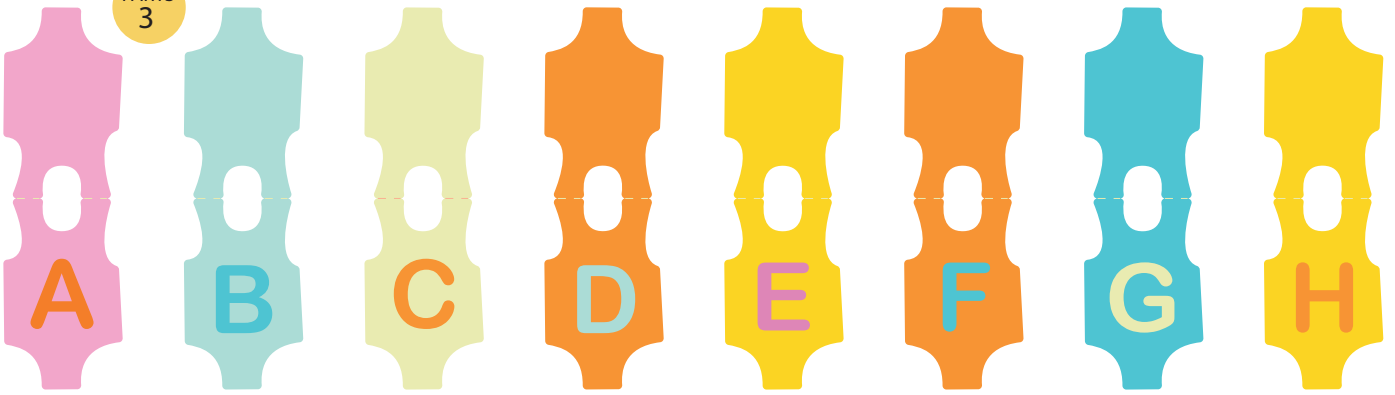
Instructions

1. Cut out all parts. For parts 3 and 4 you only need to cut out the letters you require to spell out your chosen message (the whole alphabet is available). Use a craft knife or scissors.
2. Carefully fold along all fold lines (see key for direction of folds). Before folding it is recommended to score the line lightly with a craft knife or a ballpoint pen that no longer has ink in it. This will make folding easier and more precise.
3. Parts 1 will be the poles to hold up the washing line of babygrows. One at a time, roll the paper up to make a long thin cylinder. You can use a pencil or similar to wrap around to make it easier. Put a thin line of glue where marked and hold together until the glue has dried. Alternatively you can use decorated drinking straws instead of making these parts.
4. Lay out part 2 in front of you and place parts 3 (the babygrow letters that you've chosen to make your message) on the washing line (part 2) to see how they need to be placed. Then, one at a time, fold them over and glue together (white side inside), sandwiching the washing line (part 2) inside.
If you avoid putting glue on the top half of the babygrows, you then should be able to slide the letters along to get the perfect placement. Do this with all of your letters until you have your message in place.
5. Take parts 4 (your chosen baby block letters) and one by one glue together. Take note of which sides correspond to which tabs. The white side will be the bottom and is left blank to avoid any transference of ink to the cake.
6. Now your cake toppers are ready to place on your cake. You can use a wooden bbq skewer or cocktail stick inside the washing line poles to help secure the washing line to the cake. If you don't have these, you can roll up a piece of the leftover paper and use this instead.

KEY



PARTS
3



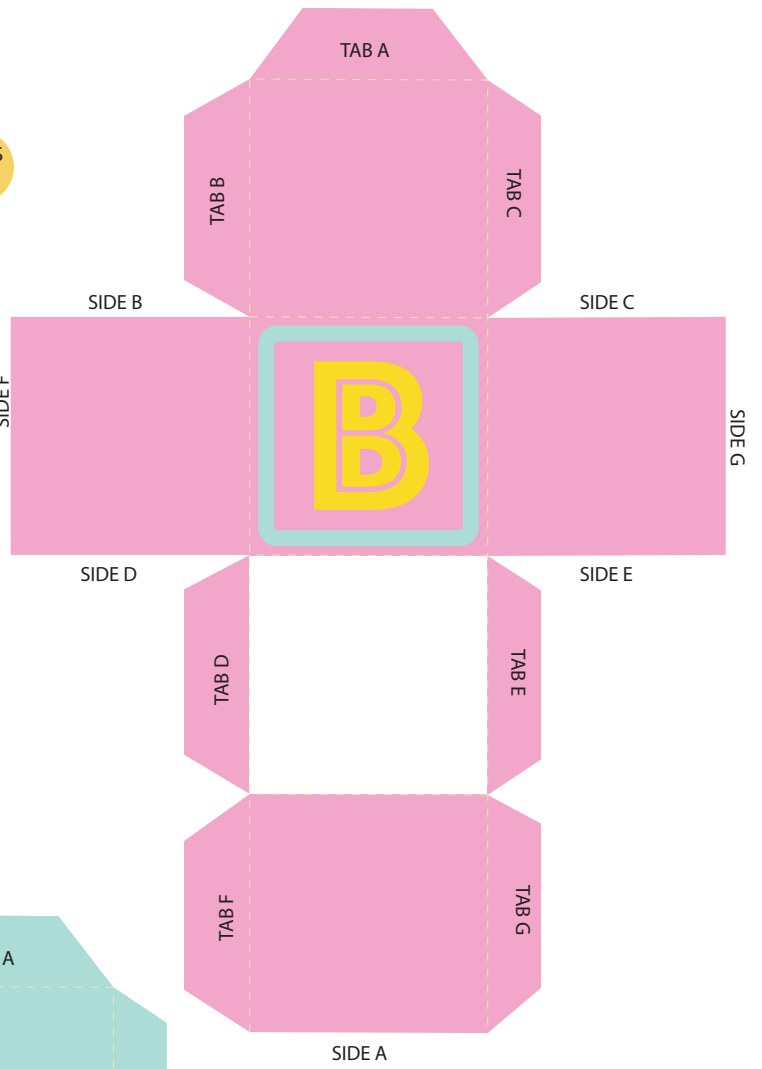
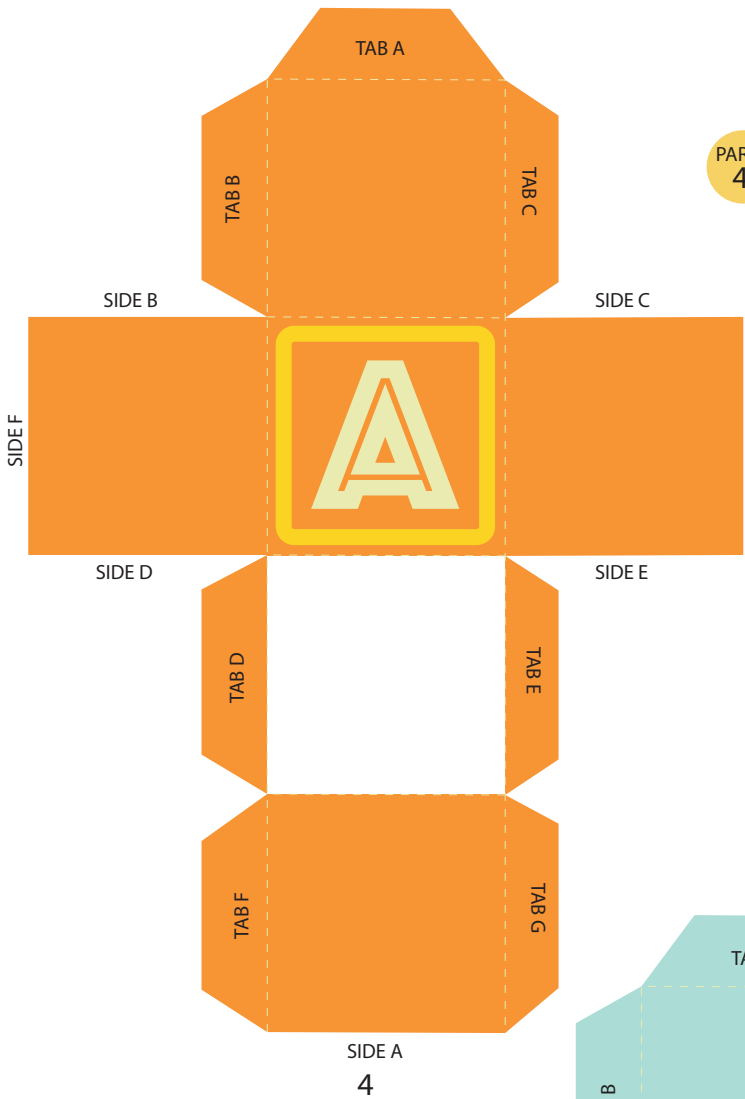
PARTS
1



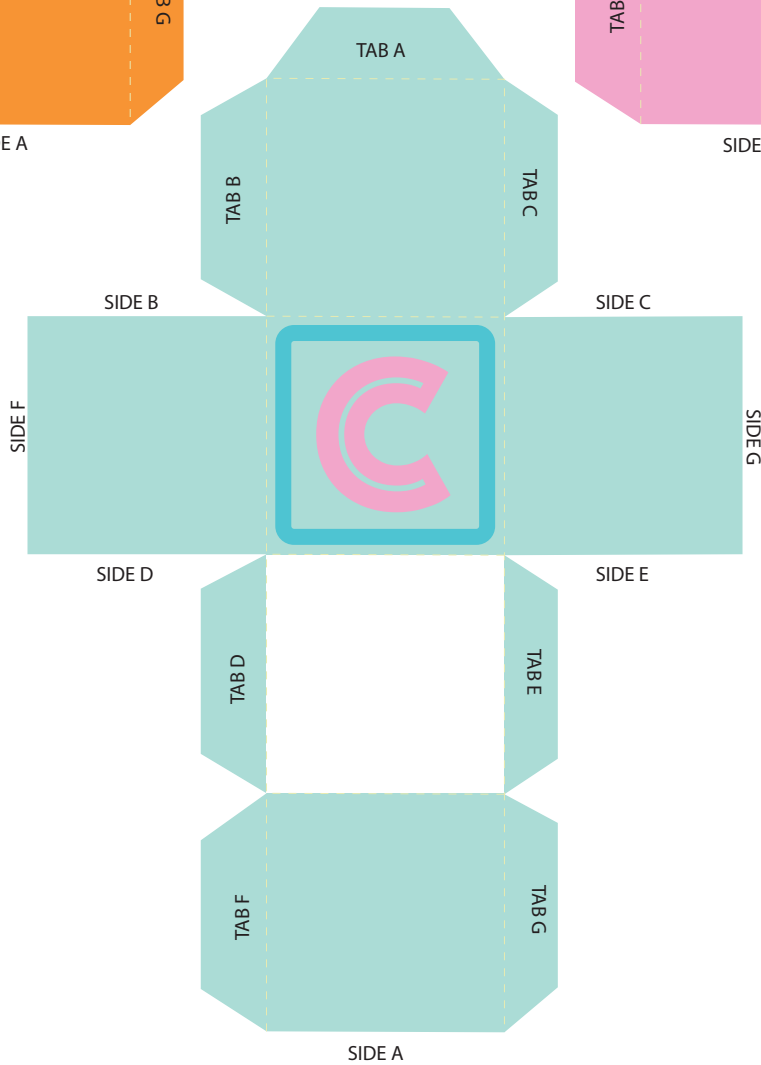
PART
2



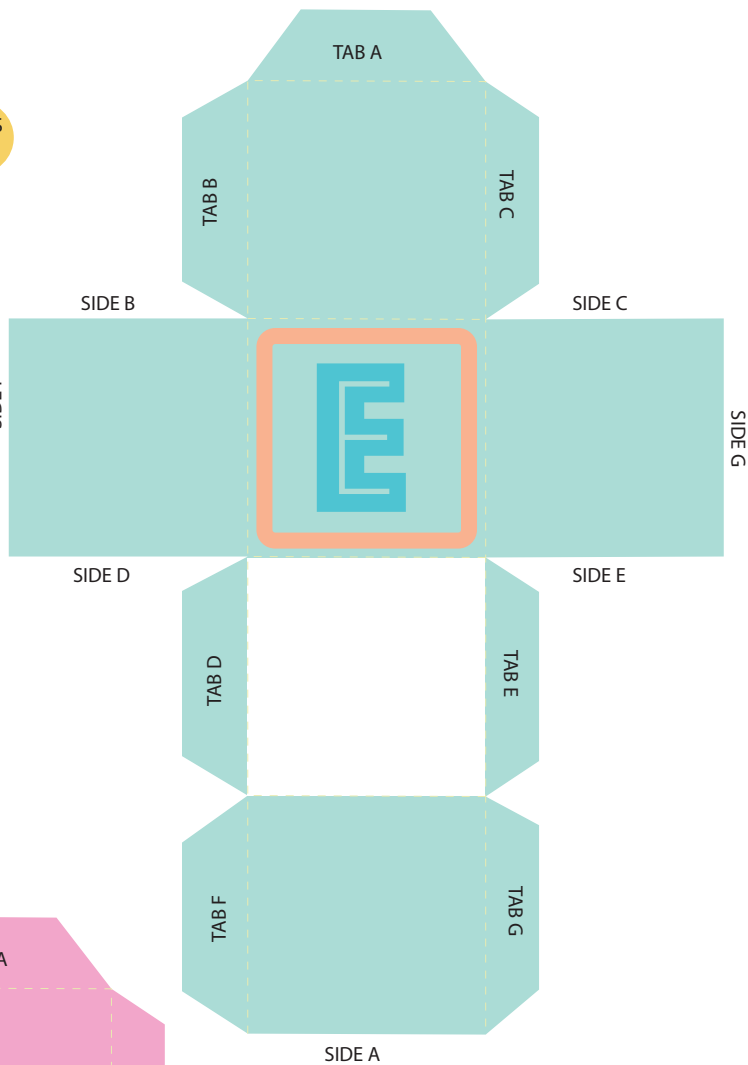
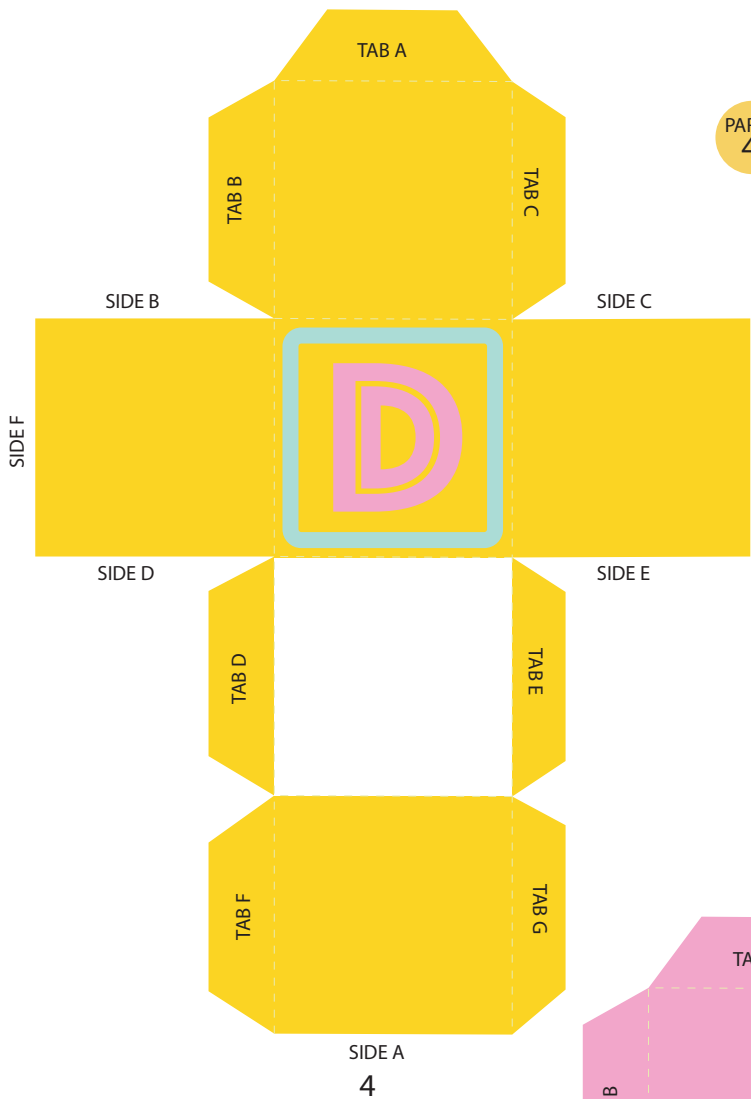
PARTS
4



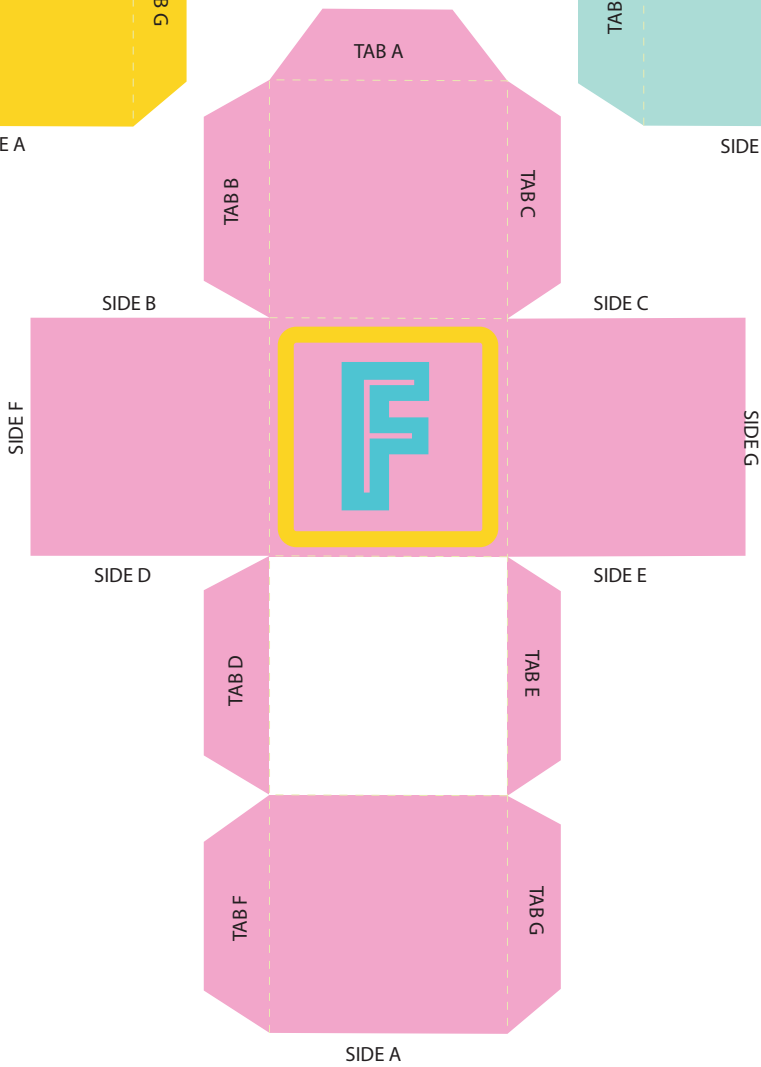
SIDE A
4



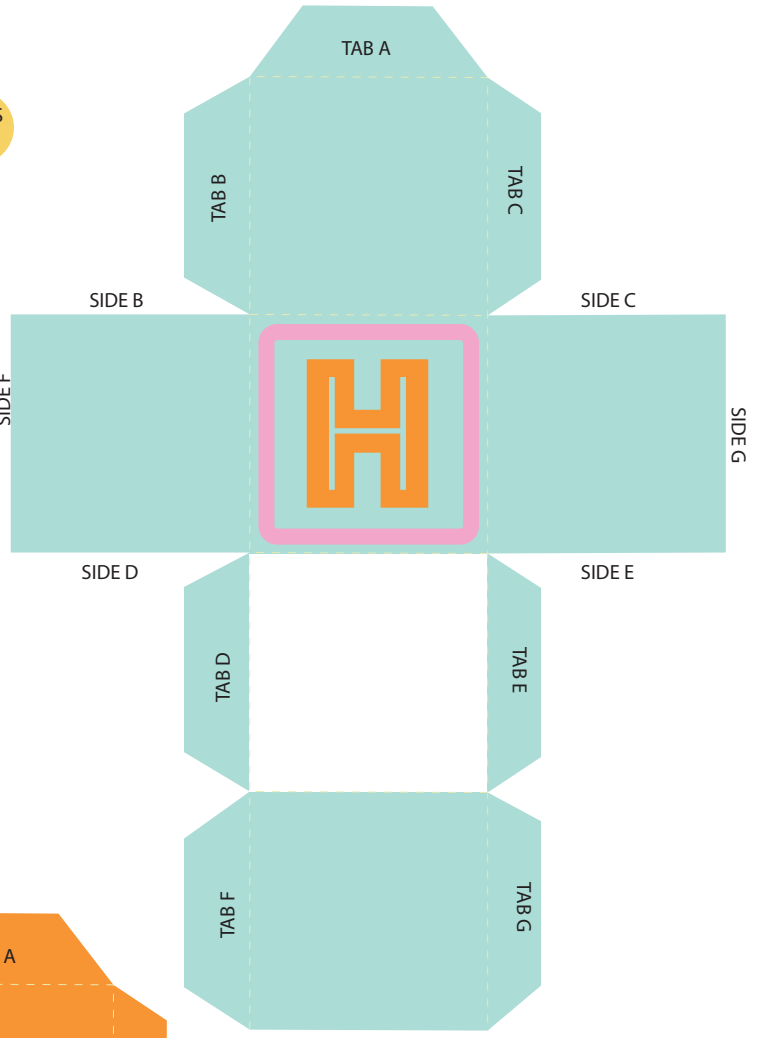
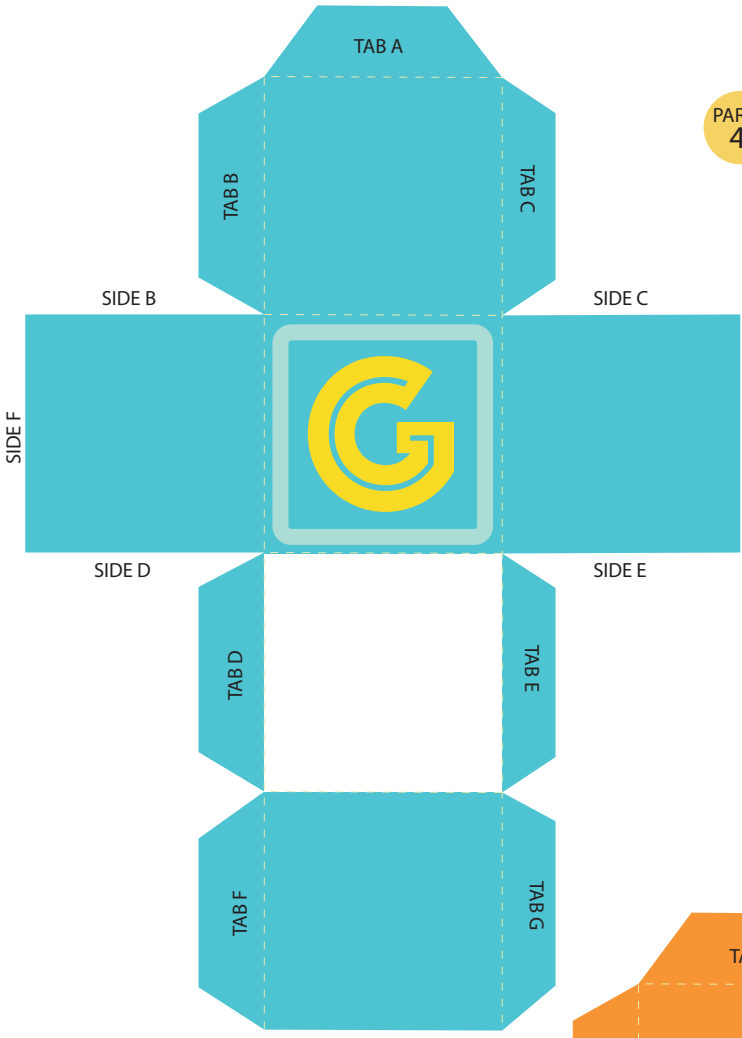
PARTS
4



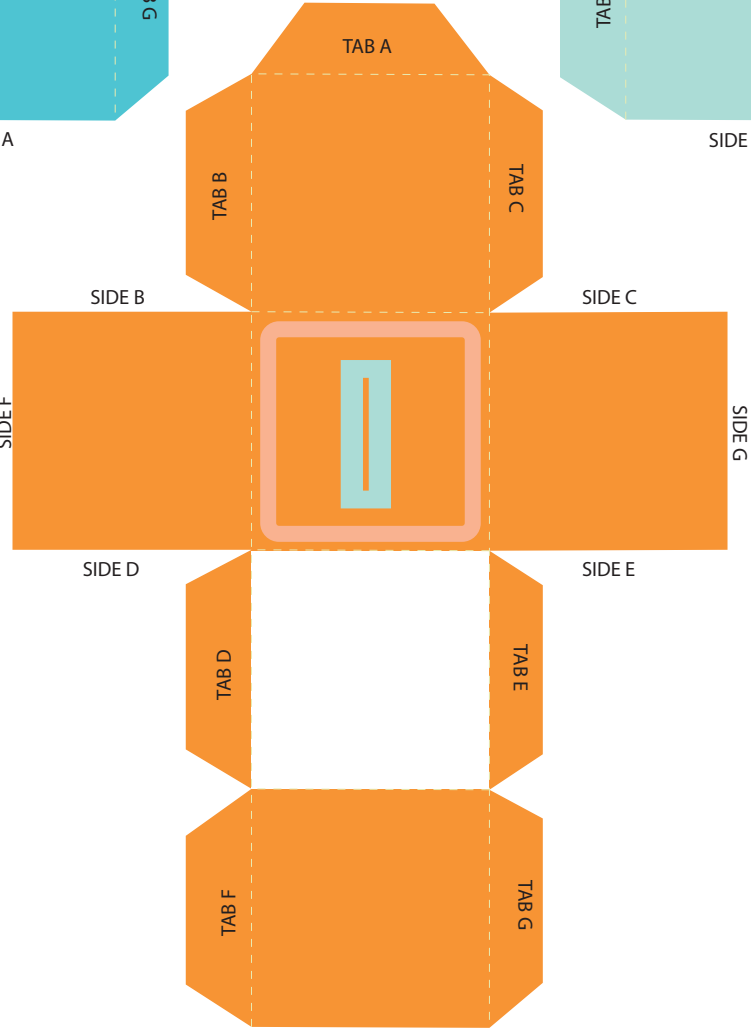
SIDE A
4



PARTS
4

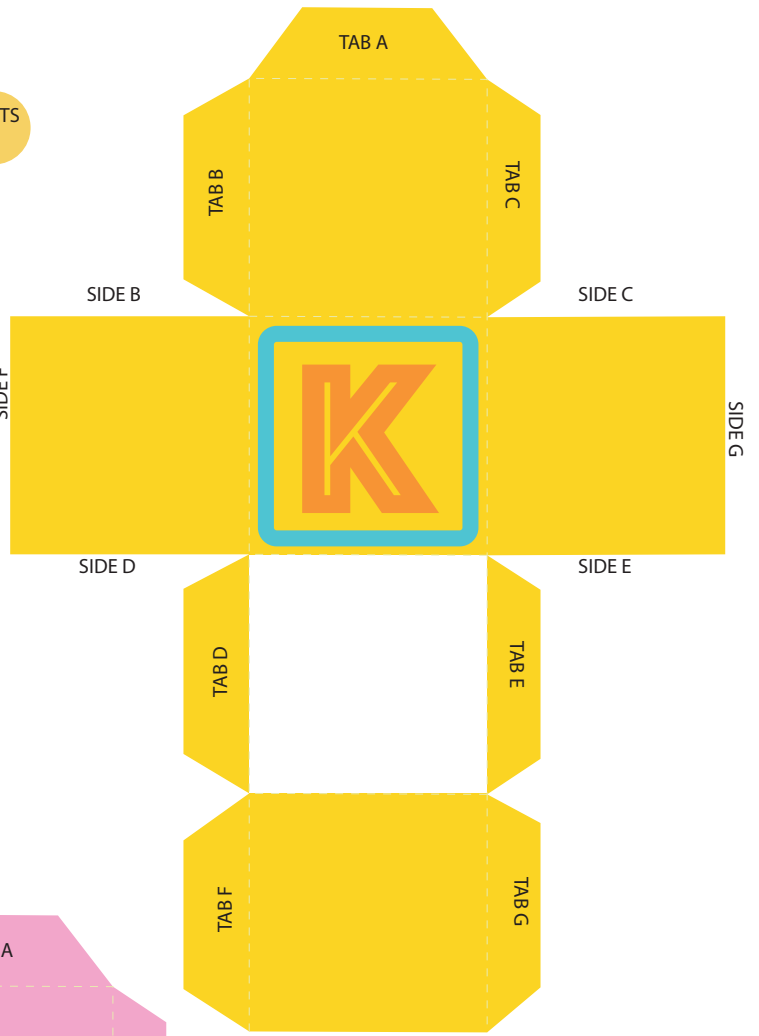
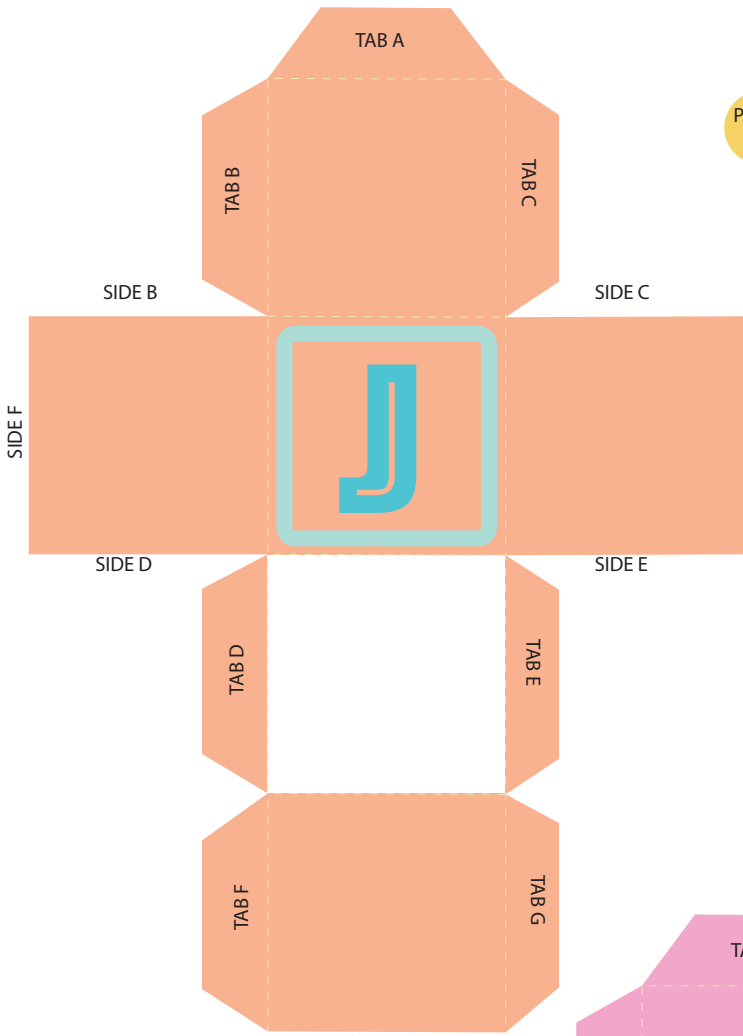


SIDE A
4

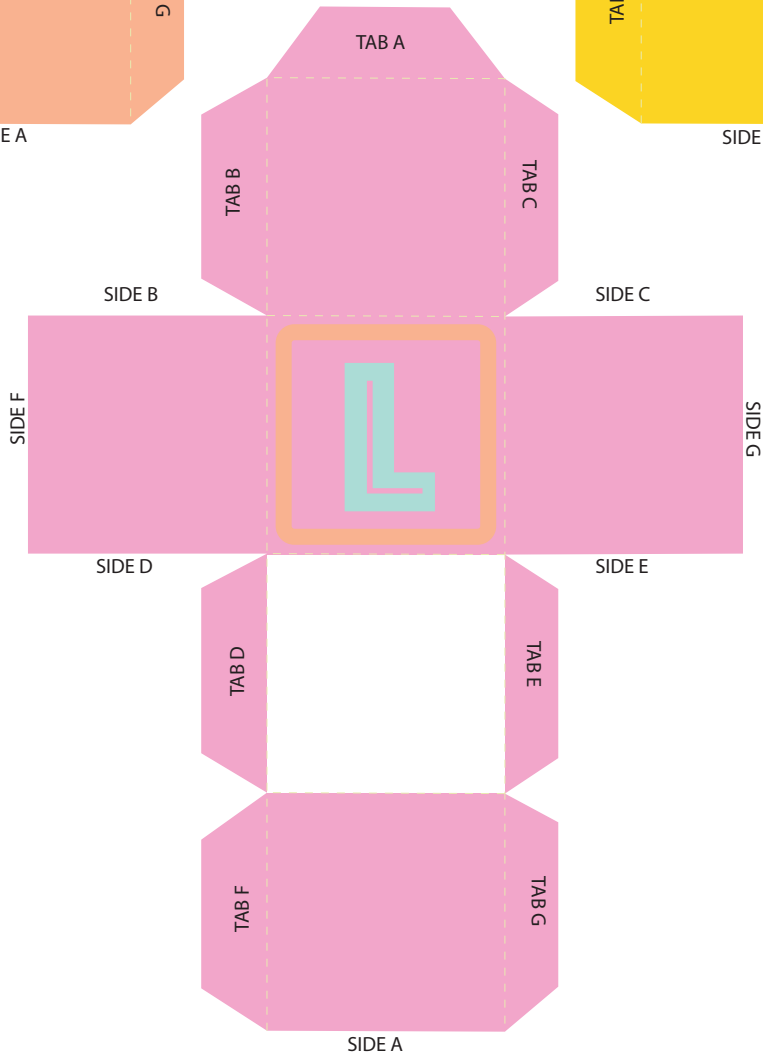


SIDE A

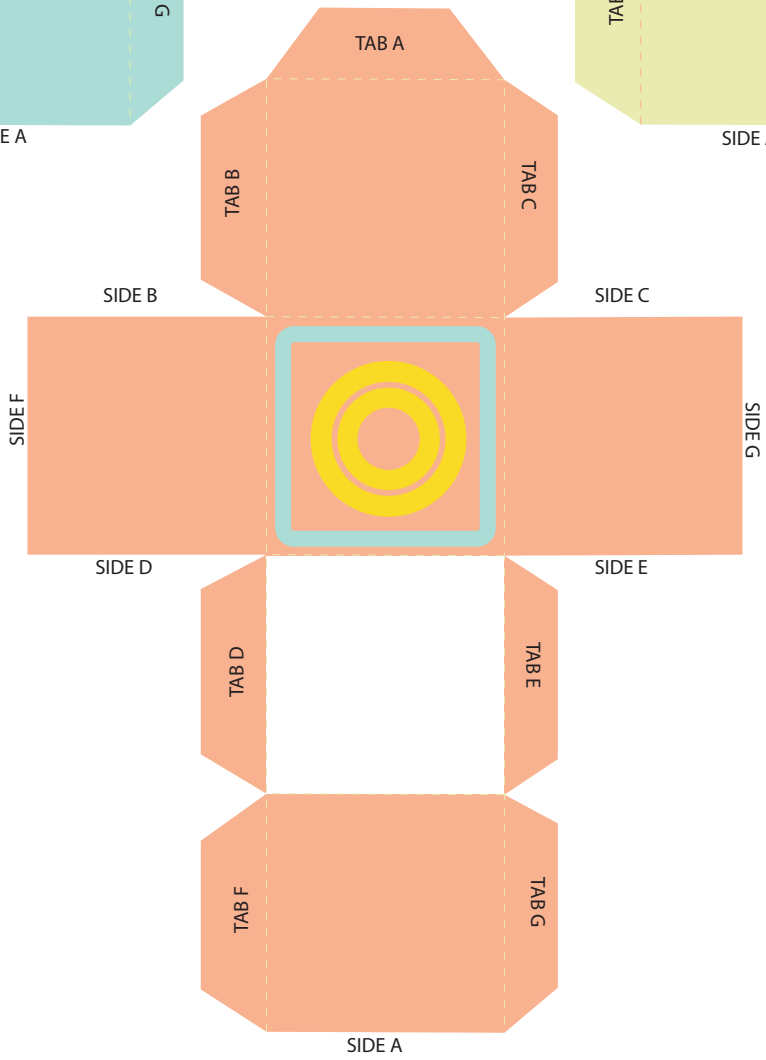
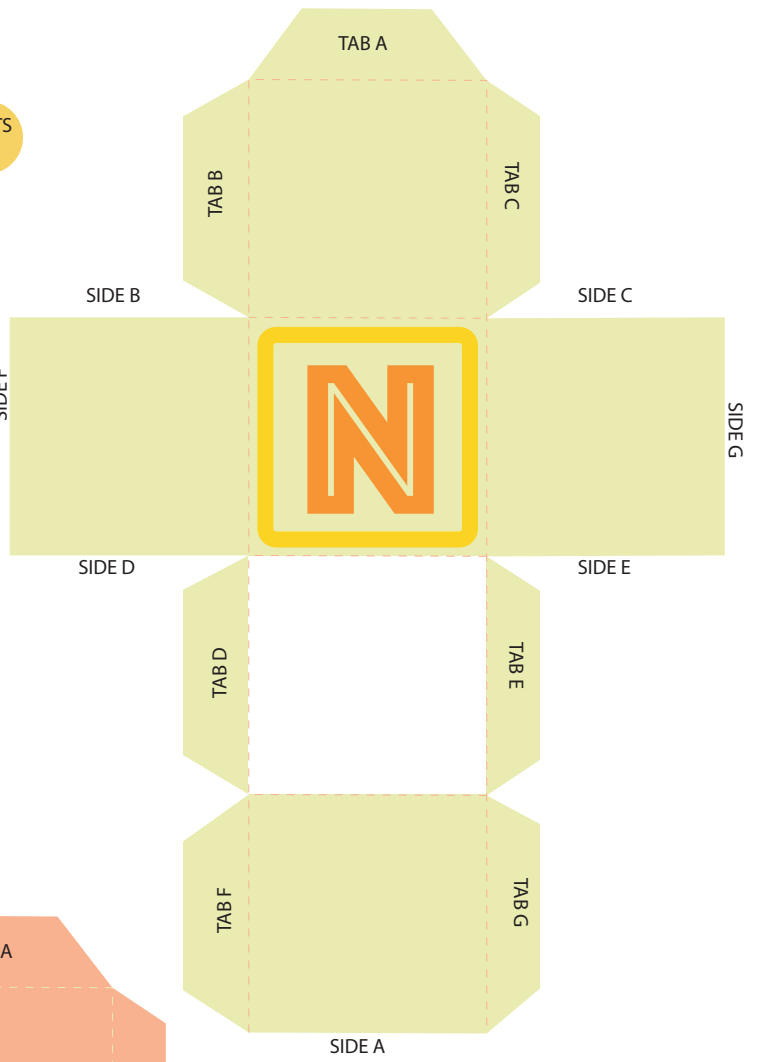
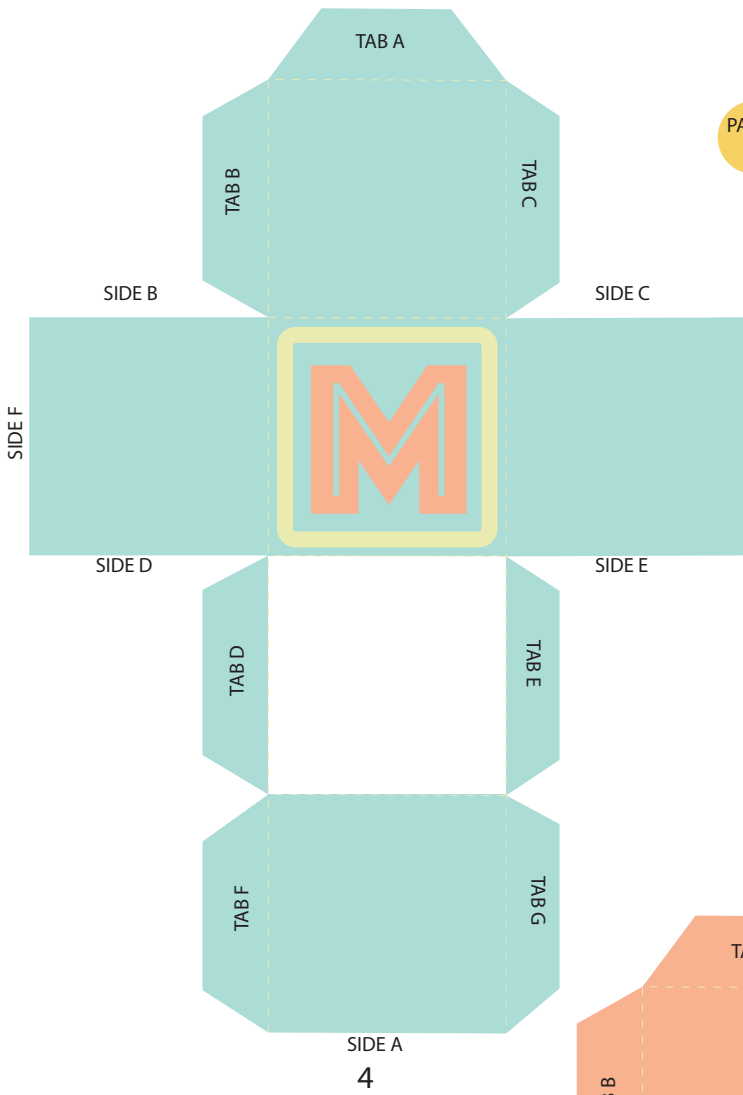
PARTS
4



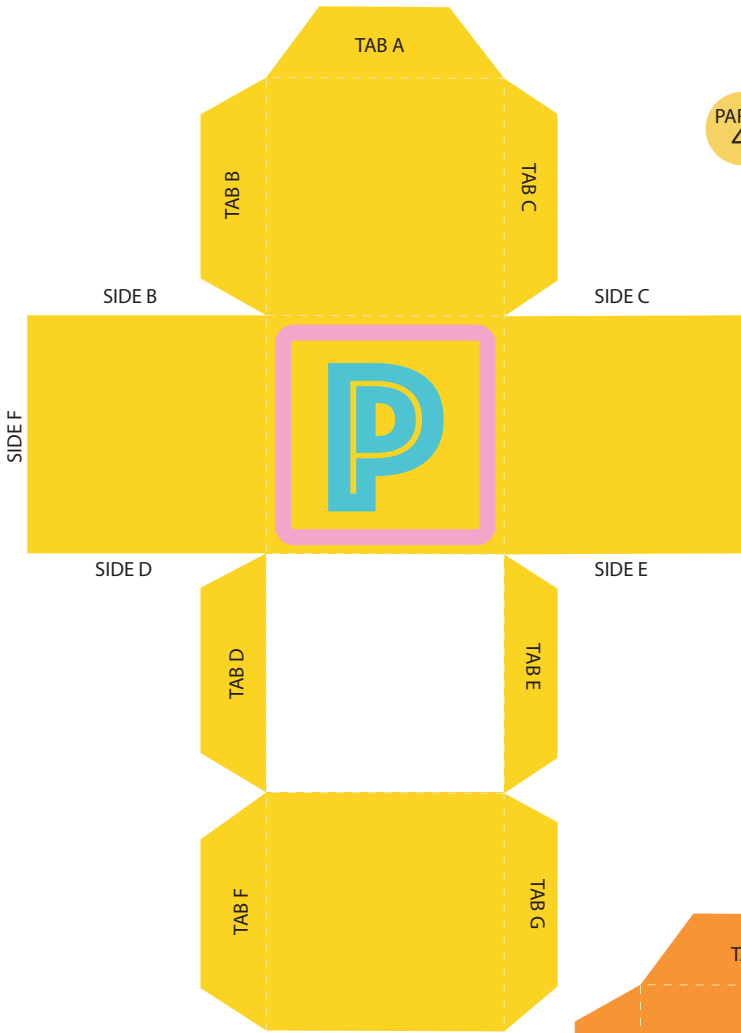
SIDE A
4



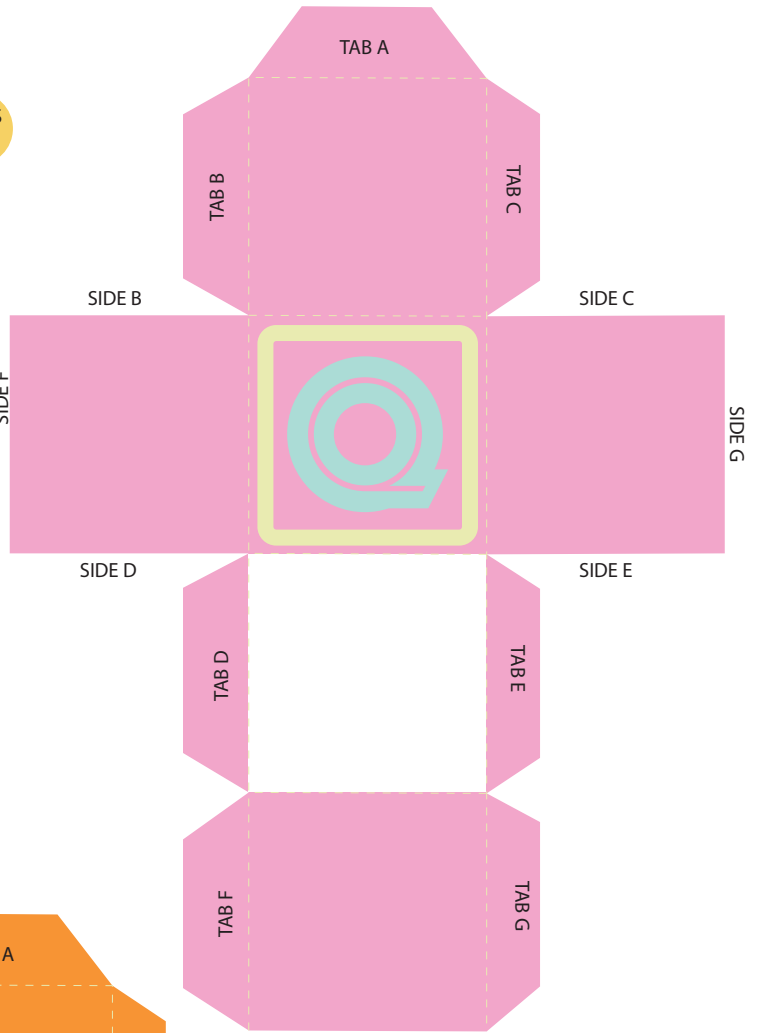
PARTS
4



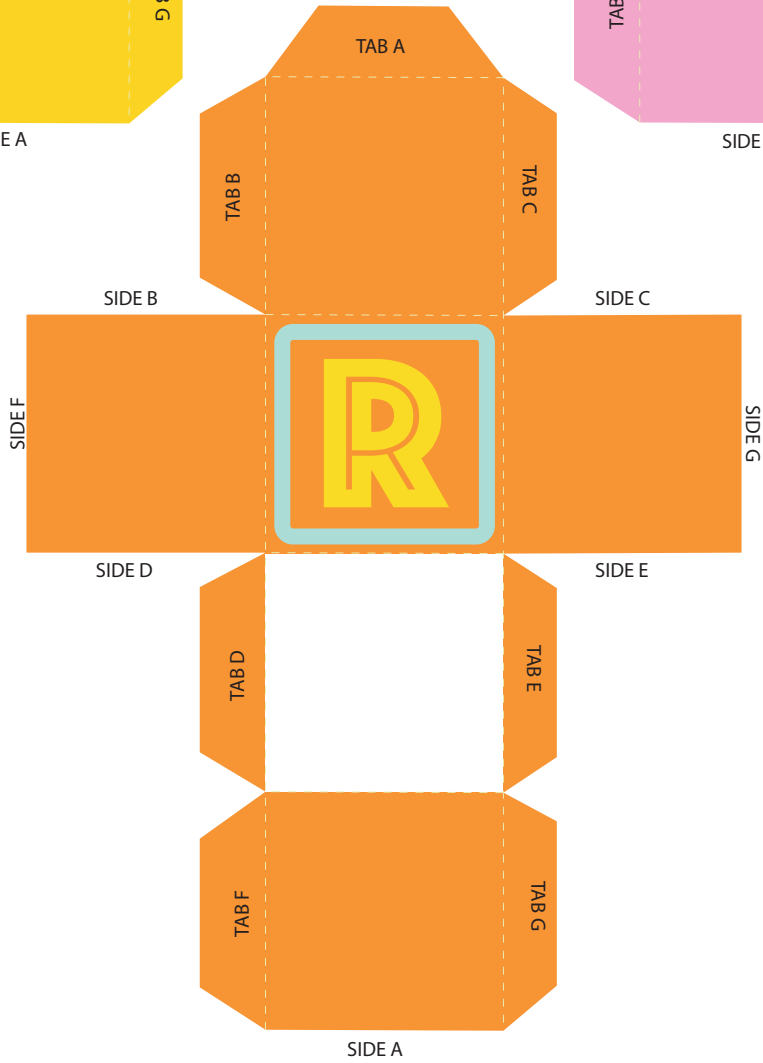
PARTS
4



SIDE A
4



SIDE A



SIDE A