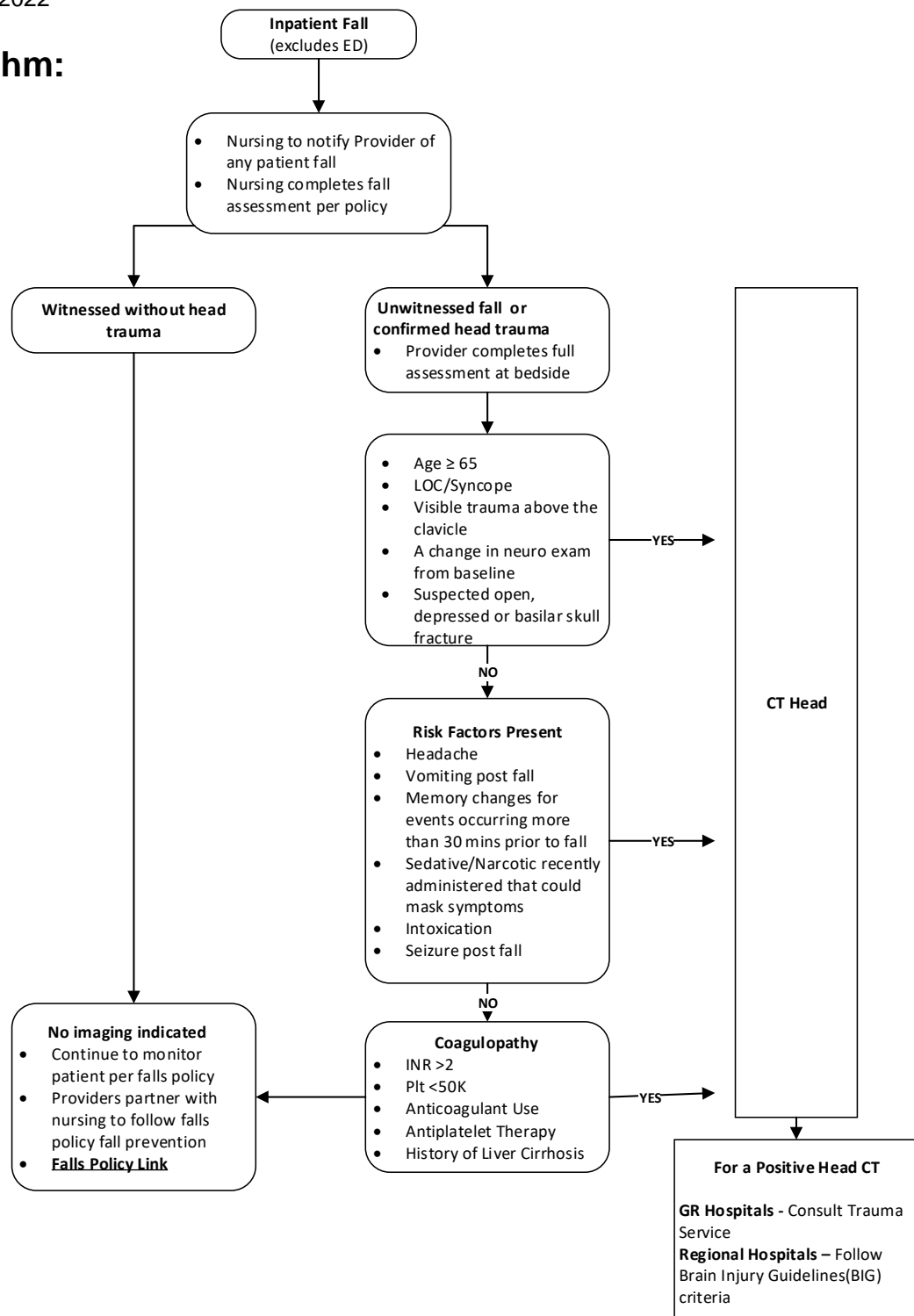


POST FALL HEAD COMPUTED TOMOGRAPHY (CT), INPATIENT, PATHWAY

Updated: AUGUST 23, 2022

Clinical Algorithm:



Clinical Pathway Summary

CLINICAL PATHWAY NAME: Post Fall Head CT, Inpatient

PATIENT POPULATION AND DIAGNOSIS: All Adult Inpatients

APPLICABLE TO: All Spectrum Health Acute Care Inpatient Sites

BRIEF DESCRIPTION: This algorithm is a resource to be used by the Hospitalist as a guideline to identify when a head CT is appropriate post fall.

IMPLEMENTATION DATE: October 1, 2022

LAST REVISED: August 23, 2022

Pathway Information

OWNERS(S): Dr Shagufta Hayat

CONTRIBUTOR(S): Dr Cheryl Peavler, Caroline Maas CNS (clinical nurse specialists), Mary Dougherty Nursing Director, Rachel Spek Sr Specialist Improvement

EXPERT IMPROVEMENT TEAM (EIT): Hospitalist Quality EIT

CLINICAL PRACTICE COUNCIL (CPC): Acute Health

CPC APPROVAL DATE: August 23, 2022

OTHER TEAM(S) IMPACTED: Falls EIT

References

1. [Cerreta F, Eichler HG, Rasi G. Drug policy for an aging population--the European Medicines Agency's geriatric medicines strategy. N Engl J Med 2012; 367:1972.](#)
2. [Lustenberger T, Talving P, Schnüriger B, et al. Impact of advanced age on outcomes following damage control interventions for trauma. World J Surg 2012; 36:208.](#)
3. [McGwin G Jr, MacLennan PA, Fife JB, et al. Preexisting conditions and mortality in older trauma patients. J Trauma 2004; 56:1291.](#)
4. [Keller JM, Sciadini MF, Sinclair E, O'Toole RV. Geriatric trauma: demographics, injuries, and mortality. J Orthop Trauma 2012; 26:e161.](#)
5. [Jacobs DG. Special considerations in geriatric injury. Curr Opin Crit Care 2003; 9:535.](#)
6. [Caterino JM, Valasek T, Werman HA. Identification of an age cutoff for increased mortality in patients with elderly trauma. Am J Emerg Med 2010; 28:151.](#)
7. [Labib N, Noh T, Winocour S, et al. Severely injured geriatric population: morbidity, mortality, and risk factors. J Trauma 2011; 71:1908.](#)
8. [Aschkenasy MT, Rothenhaus TC. Trauma and falls in the elderly. Emerg Med Clin North Am 2006; 24:413.](#)
9. [Sterling DA, O'Connor JA, Bonadies J. Geriatric falls: injury severity is high and disproportionate to mechanism. J Trauma 2001; 50:116.](#)

10. [Ganz DA, Bao Y, Shekelle PG, Rubenstein LZ. Will my patient fall? JAMA 2007; 297:77.](#)
11. [Hartholt KA, Lee R, Burns ER, van Beeck EF. Mortality From Falls Among US Adults Aged 75 Years or Older, 2000-2016. JAMA 2019; 321:2131.](#)
12. [Hoffman GJ, Liu H, Alexander NB, et al. Posthospital Fall Injuries and 30-Day Readmissions in Adults 65 Years and Older. JAMA Netw Open 2019; 2:e194276.](#)
13. [Siracuse JJ, Odell DD, Gondek SP, et al. Health care and socioeconomic impact of falls in the elderly. Am J Surg 2012; 203:335.](#)
14. [Thompson HJ, McCormick WC, Kagan SH. Traumatic brain injury in older adults: epidemiology, outcomes, and future implications. J Am Geriatr Soc 2006; 54:1590.](#)
15. [Schwab CW, Kauder DR. Trauma in the geriatric patient. Arch Surg 1992; 127:701.](#)
16. [Lee WY, Cameron PA, Bailey MJ. Road traffic injuries in the elderly. Emerg Med J 2006; 23:42.](#)
17. [Bonne S, Schuerer DJ. Trauma in the older adult: epidemiology and evolving geriatric trauma principles. Clin Geriatr Med 2013; 29:137.](#)
18. [Schiller WR, Knox R, Chleborad W. A five-year experience with severe injuries in elderly patients. Accid Anal Prev 1995; 27:167.](#)
19. [Demetriades D, Murray J, Martin M, et al. Pedestrians injured by automobiles: relationship of age to injury type and severity. J Am Coll Surg 2004; 199:382.](#)
20. [Reinhold M, Bellabarba C, Bransford R, et al. Radiographic analysis of type II odontoid fractures in a geriatric patient population: description and pathomechanism of the "Geier"-deformity. Eur Spine J 2011; 20:1928.](#)
21. [Bulger EM, Arneson MA, Mock CN, Jurkovich GJ. Rib fractures in the elderly. J Trauma 2000; 48:1040.](#)
22. [Switzer JA, Gammon SR. High-energy skeletal trauma in the elderly. J Bone Joint Surg Am 2012; 94:2195.](#)
23. [Wibbenmeyer LA, Amelon MJ, Morgan LJ, et al. Predicting survival in an elderly burn patient population. Burns 2001; 27:583.](#)
24. [Lionelli GT, Pickus EJ, Beckum OK, et al. A three decade analysis of factors affecting burn mortality in the elderly. Burns 2005; 31:958.](#)
25. [Nagy KK, Smith RF, Roberts RR, et al. Prognosis of penetrating trauma in elderly patients: a comparison with younger patients. J Trauma 2000; 49:190.](#)
26. [Bergeron E, Clement J, Lavoie A, et al. A simple fall in the elderly: not so simple. J Trauma 2006; 60:268.](#)
27. [Callaway DW, Wolfe R. Geriatric trauma. Emerg Med Clin North Am 2007; 25:837.](#)
28. [Heffernan DS, Thakkar RK, Monaghan SF, et al. Normal presenting vital signs are unreliable in geriatric blunt trauma victims. J Trauma 2010; 69:813.](#)
29. [Kirkpatrick JB, Pearson J. Fatal cerebral injury in the elderly. J Am Geriatr Soc 1978; 26:489.](#)