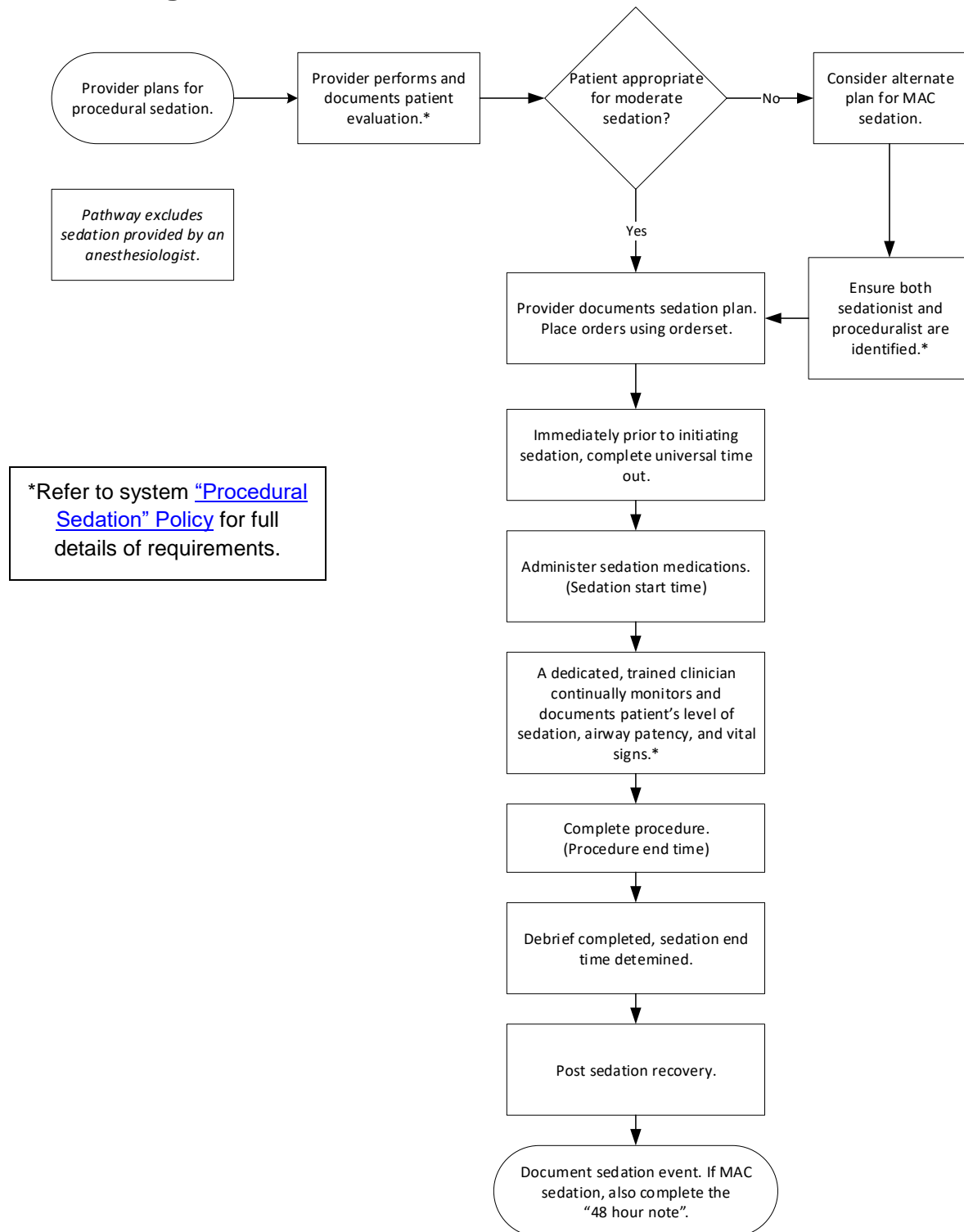


Clinical Pathway: Procedural Sedation

Updated: November 19, 2021

Clinical algorithm:



Clinical Pathway Summary

CLINICAL PATHWAY NAME: Procedural Sedation

PATIENT POPULATION AND DIAGNOSIS: Patients receiving procedural sedation.

APPLICABLE TO: Big Rapids (Mecosta County Medical Center), Gerber (Newaygo County General Hospital Association), Ludington (Memorial Medical Center of West Michigan), Outpatient/Physician Practices, Pennock (Pennock Hospital), Reed City (Reed City Hospital Corporation), SH GR Hospitals (Spectrum Health Hospitals), SHMG, United/Kelsey (Spectrum Health United; Spectrum Health Kelsey Hospital), Zeeland (Zeeland Community Hospital)

BRIEF DESCRIPTION: Procedural sedation events are those which involve the use of pharmacologic medications (sedatives & analgesics) to enable clinicians to perform operative, diagnostic, or therapeutic procedures effectively while monitoring the patient closely for potential adverse effects. This pathway outlines the standard of care for procedural sedation.

OVERSIGHT TEAM LEADER(S): Dr. Ken Johnson, Dr. David Christianson, Carol Sadate-Akhavi

OWNING EXPERT IMPROVEMENT TEAM (EIT): Procedural Sedation

MANAGING CLINICAL PRACTICE COUNCIL (CPC): Acute Health

CPC APPROVAL DATE: *Pending* November 23, 2021

OTHER TEAM(S) IMPACTED: Procedural areas, Emergency Department, Radiology, Nursing, Respiratory Therapy, Pediatrics

LAST REVISED: November 19, 2021

DATA ANALYTICS DASHBOARD: [Tableau Server \(spectrum-health.org\)](https://tableau.spectrum-health.org) ; Coming Soon – Epic Sedation Dashboard

FOR MORE INFORMATION, CONTACT: Tracy Hosford

Clinical pathways clinical approach

TREATMENT AND MANAGEMENT:

Definitions:

Moderate Sedation (Formerly “Conscious Sedation”): A drug induced depression of consciousness during which patients respond purposefully to verbal commands, either alone or accompanied by light tactile stimulation. No interventions are required to maintain a patent airway, and spontaneous ventilation is adequate. Cardiovascular function is usually maintained. (ASA, 2018)

Monitored Anesthesia Care (MAC) (Formerly “Deep Sedation”): A drug-induced depression of consciousness during which patients cannot be easily aroused but may respond purposefully following repeated or painful stimulation. The ability to independently maintain ventilatory function may be impaired. Patients may require assistance in maintaining a patent airway, and spontaneous ventilation may be inadequate. Cardiovascular function is usually maintained. MAC requires that the patient be managed or supervised by a practitioner who is qualified and privileged to administer MAC as specified by Spectrum Health Medical Staff Bylaws.

Procedural sedation is high risk and highly regulated. Spectrum Health maintains a detailed [policy](#) to ensure patients receive a uniform standard of care for administration, monitoring, and recovery/discharge.

Sedation ordersets:

- Pediatric Procedural Sedation
- Pediatric ED Procedural Sedation Moderate / MAC
- Procedural Sedation MAC
- Procedural Sedation Moderate

*The sedation medications panel is also utilized in some procedural order sets for individual specialties.

Tip Sheets:

- [Sedation Navigator Tip Sheet](#)
- [Lumens Provider Moderate Sedation Documentation for Bronchoscopy](#)

REFERENCES:

The American Society of Anesthesiologists. Practice Standards, Guidelines, and Statements. Website: <https://www.asahq.org/>

The Society for Pediatric Sedation. Practice Standards, Guidelines, and Statements. Website: <http://www.pedsedation.org/>

American Association of Nurse Anesthetists. Practice Standards, Guidelines, and Statements. Website: <https://www.aana.com/>

American Society of Peri Anesthesia Nurses. Practice Standards, Guidelines, and Statements. Website: <http://www.aspan.org/>

American Nurses Association. Practice Standards, Guidelines, and Statements. Website: <https://www.nursingworld.org/>

American Academy of Pediatrics. Practice Standards, Guidelines, and Statements. Website: <https://www.aappublications.org/>

American Society for Gastrointestinal Endoscopy. Practice Standards, Guidelines, and Statements. Website: <http://www.asge.org/>

Society of Invasive Cardiovascular Professionals. Practice Standards, Guidelines, and Statements. Website: <https://www.cathlabdigest.com/>

Society for Cardiovascular Angiography and Interventions. Practice Standards, Guidelines, and Statements. <http://www.scai.org/default.aspx>

Center for Medicare & Medicaid Services (CMS) Manual Guidelines – Pub. 100-07 State Operations Provider Certification, Transmittal Memo 11-10- Hospitals - January 14, 2011. Subject: Clarification of the Interpretive Guidelines for the Anesthesia Services Condition of Participation at 42 CFR 482.52. Effective January 14, 2011. Website: http://www.cms.gov/SurveyCertificationgeninfo/downloads/SCLetter11_10.pdf

Clinical Policy: Universal Protocol for All Invasive Procedures
Rules and Regulations of the Medical Staff (Grand Rapids) Rules Regarding Surgical Care