



**⚠ Must read before use. Failure to do so can result in serious injury or death.**

Vor Gebrauch unbedingt lesen. Andernfalls sind schwere Verletzungen oder Todesfälle möglich. **HIER SCANNEN.**

À lire absolument avant toute utilisation. Le non-respect de cette consigne peut entraîner des blessures graves, voire mortelles. **SCANNER ICI.**

Leer antes de usar. El no hacerlo puede resultar en lesiones graves o muerte. **ESCANEE AQUÍ.**

Lezen voor gebruik. Het nalaten hiervan kan leiden tot serieuze verwondingen of de dood. **SCAN HIER.**

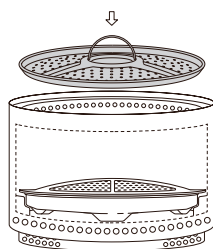
Da leggere prima dell'uso. In caso contrario, possono verificarsi lesioni gravi o morte. **SCANSIONA QUI.**

**SCAN HERE**



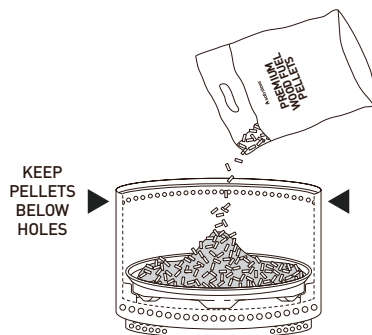
01. Remove all packaging from the pellet adapter.
02. Remove the flame ring from your fire pit.
03. Empty any ashes or debris from previous fires into an ash-safe container.
04. Using the handle in the center of the pellet adapter, lower it gently into place on top of the base plate in the fire pit.

**NOTE:** The removable base plate and ash pan must be installed in 2.0 Fire Pits when using the pellet adapter.



05. Fill the fire pit with the desired amount of wood pellets.

**NOTE:** Do not fill the pellets past the fire pit's secondary combustion holes at the top of the inner wall. This can restrict airflow or cause pellets to fall into the holes.



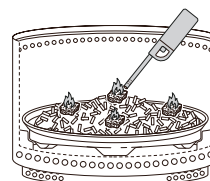
06. Replace the flame ring.
07. Evenly space natural wood fire starters or pellet fire-starting gel around the fire pit on top of the pellets. Do not use propellants, gas, kerosene, lighter fluid, or other chemicals not specifically designed for lighting wood fuel pellet fires.

**Ranger and Bonfire**  
use **3-4** fire starters

**Yukon and Canyon**  
use **4-5** fire starters



08. Light the fire starters.



**NOTE:** The pellet adapter is stainless steel, but it will patina and discolor with use due to the high temperatures inside the fire pit. Some slight shifting in shape may occur also. These are normal characteristics and will not affect the functionality of the pellet adapter.

# TIPS AND TRICKS

## Adding pellets to the fire

Be careful when adding pellets to an existing fire to avoid injury. Adding too many pellets at a time could also smother the fire and cause it to smoke. Instead, spread small amounts of pellets evenly around the fire pit's walls to prevent extinguishing the flame.

## Pellet Ash

Pellets will take longer to break down than traditional wood ash. You can use a fire poker to stir the pellets and help to break them down more quickly.

## Emptying

Only attempt to empty the ash from your fire pit once it has completely cooled. Using your hand or a stiff bristle brush, sweep away the ash from the handle and lift the pellet adapter out of the fire pit. Dump any ash into an ash-safe container. Empty your fire pit's ash pan as well.

## Cleaning

Once the pellet adapter is completely cool, use a stiff bristle brush to remove any debris that remains attached after ash removal. Do not use any corrosive cleaning materials.

## Storage

When not in use, your pellet adapter should be stored in a dry place. Prolonged exposure to harsh weather will increase rust and discoloration.

## Pellets

The choice of pellets can drastically affect the quality of your fire. Use hardwood or softwood pressed-wood fuel pellets without any chemical binders or additives. Pellet size should be 6-8mm in diameter and 6-25mm in length for best results. Solo Stove Premium Wood Fuel Pellets are made with 100% hardwood and do not contain any binders or additives.

**Never leave your fire pit unattended when in use or when cooling. If it is too hot to touch, it is too hot to leave.**

# USER WARNINGS



**WARNING! FOR OUTDOOR USE ONLY!**

01. Do not use Solo Stove fire pits until you have read the operating instructions and user warnings. Serious injury, death, and/or property damage may occur.
02. Always use Solo Stove fire pits in accordance with all applicable local, state, and national codes. Contact your local fire department for details.
03. Solo Stove fire pits are not toys and can be dangerous. When using Solo Stove fire pits, exercise the same caution you would with an open fire.
04. Do not operate Solo Stove fire pits if under the age of 18 unless under strict adult supervision.
05. Never leave Solo Stove fire pits unattended while hot, especially when children and pets are nearby or when used on or near potentially combustible surfaces. If it is too hot to touch, it is too hot to leave.
06. Do not alter or modify Solo Stove fire pits in any manner. Doing so could result in serious injury, death, and/or property damage.
07. Solo Stove fire pits are for outdoor use only.
08. Do not use Solo Stove fire pits for indoor heating. Toxic carbon monoxide can accumulate and cause asphyxiation and possibly death.
09. Do not use Solo Stove fire pits in a building, a garage, or any other enclosed area.
10. Do not use Solo Stove fire pits under any overhead or near any unprotected combustible constructions. Avoid using near any overhanging trees or shrubs.
11. Always use Solo Stove fire pits on a level, non-combustible surface.
12. NOTICE. Exercise extreme caution when using Solo Stove fire pits on or around combustible surfaces. Use on wood or composite decking is at your own risk and can lead to charring or ignition if not adequately elevated, insulated, or misused. Even when using Solo Stove Stand, wood and composite decking materials differ significantly in quality and have varying heat resistance ratings. Check with your manufacturer or builder to ensure your surface can handle high temperatures, or further elevate or insulate your fire pit to avoid potential damage.
13. Do not use gasoline, kerosene, diesel fuel, lighter fluid, alcohol, or any other flammable liquid to light or relight Solo Stove fire pits. Doing so can lead to serious injury or property damage, in particular if the flammable liquid pools in the bottom of the fire pit.
14. Do not lean over Solo Stove fire pits when lighting or when they are in use.
15. Solo Stove fire pits are extremely hot when in use. Never touch or attempt to move your fire pit during use or before it has completely cooled down.
16. Do not lean against or let any body part touch Solo Stove fire pits during use or after use until it has completely cooled down. Any direct contact may lead to serious injury whether accidental or otherwise.
17. Do not lean any objects against Solo Stove fire pits while in use.
18. Do not store or use gasoline or any other flammable vapors or liquids in the vicinity of Solo Stove fire pits while in use. Keep area around Solo Stove fire pits clear and free of any flammable or combustible materials.
19. Do not use Solo Stove fire pits on or near automobiles, trucks, vans, or recreational vehicles.
20. Keep all electrical cords away from Solo Stove fire pits.
21. Do not use Solo Stove fire pits in windy conditions.
22. Do not wear flammable or loose clothing when operating Solo Stove fire pits.
23. The use of alcohol, prescription, or non-prescription drugs may impair your ability to operate Solo Stove fire pits safely.
24. Do not use water to extinguish the fire as this could cause damage to the fire pit as well as injury to the user.
25. Dispose of ashes properly! Ashes should be placed into a metal container with a sealed metal lid. Ashes and embers can maintain heat and combustion can occur even after several hours.
26. After a period of nonuse, check your Solo Stove fire pit for signs of damage and creosote buildup. Do not operate until the necessary repairs and/or cleanup is done.
27. Solo Stove fire pits are not for commercial use.
28. Do not burn with the base plate upside down or without the ash pan in place.
29. The pellet adapter may not always rest completely flat. The shape of the adapter may continuously fluctuate as it heats and cools. This is normal.
30. Do not throw logs into the fire pit as this may dent or damage the base plate.
31. Do not use the pellet adapter in Solo Stove 2.0 fire pits without the removable ash pan and base plate installed.
32. Do not attempt to handle the pellet adapter while it is in use, or while cooling.

**FOR QUESTIONS OR COMMENTS, PLEASE VISIT [SOLOSTOVE.COM/CONTACT](https://SOLOSTOVE.COM/CONTACT)**