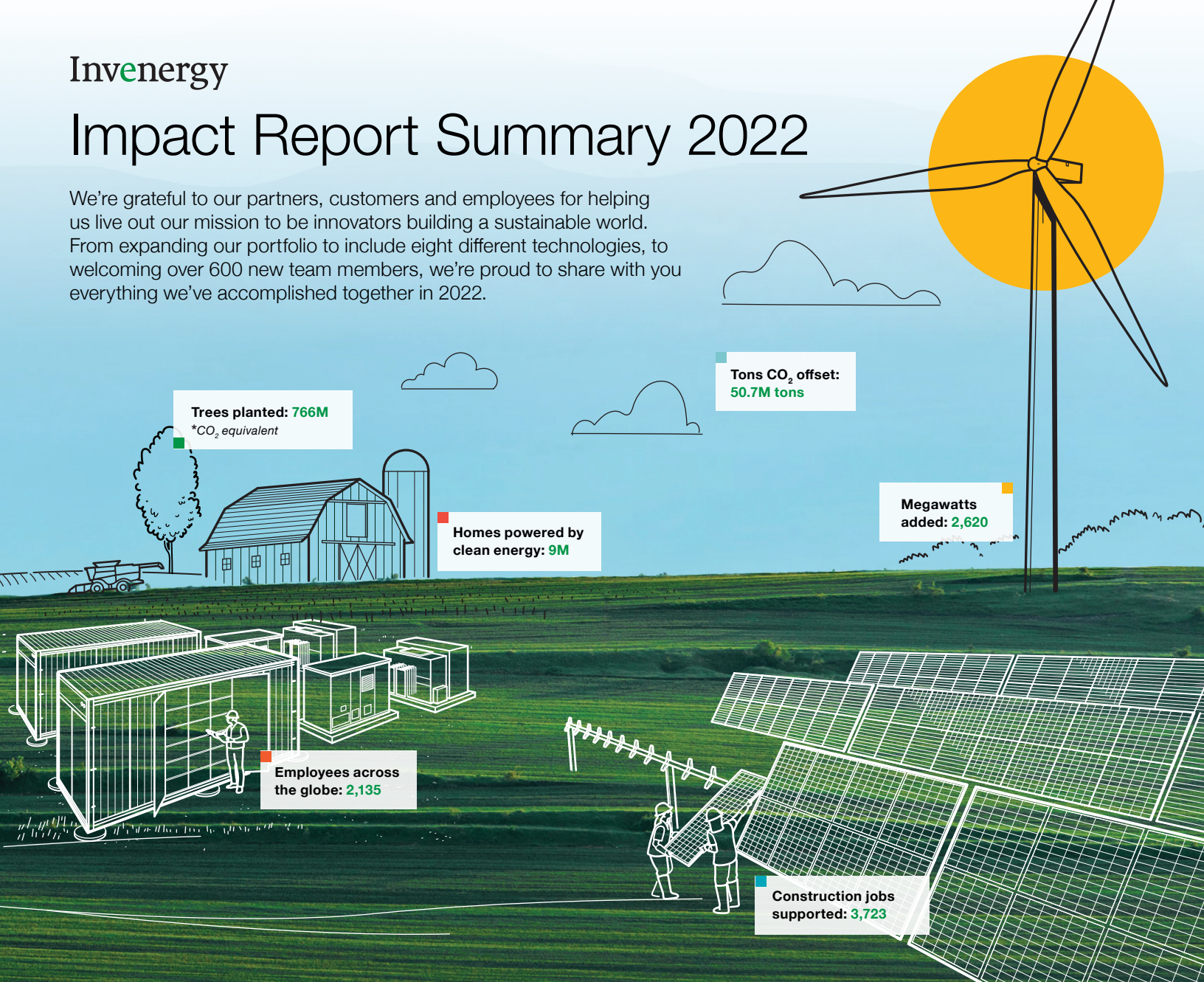


# Impact Report Summary 2022

We're grateful to our partners, customers and employees for helping us live out our mission to be innovators building a sustainable world. From expanding our portfolio to include eight different technologies, to welcoming over 600 new team members, we're proud to share with you everything we've accomplished together in 2022.



**Trees planted: 766M**  
\*CO<sub>2</sub> equivalent

**Tons CO<sub>2</sub> offset: 50.7M tons**

**Megawatts added: 2,620**

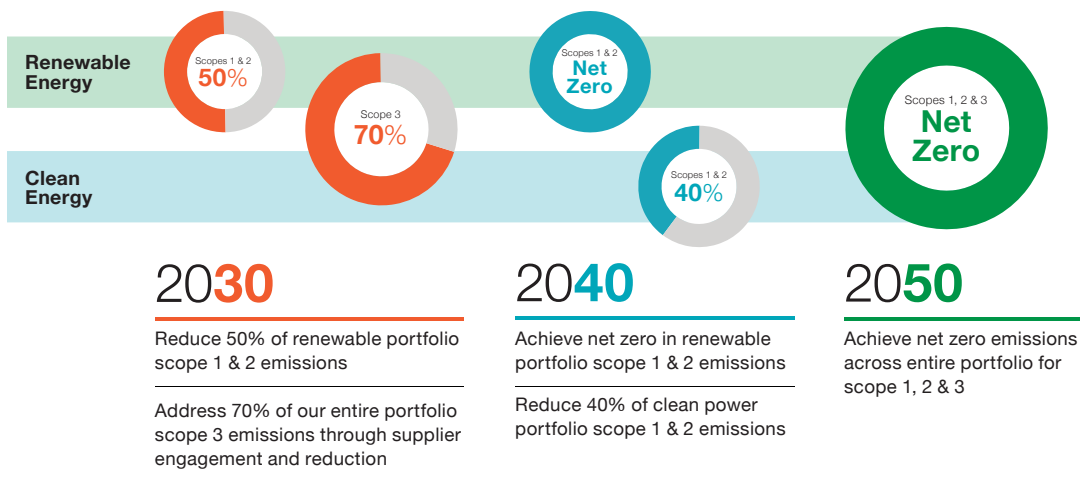
**Homes powered by clean energy: 9M**

**Employees across the globe: 2,135**

**Construction jobs supported: 3,723**

## Achieving Net Zero by 2050

As a leading clean energy company with a global view, we are proud to look to the future and share our plans to reduce our own environmental footprint to net-zero greenhouse gas emissions by 2050.



**Scope 1 Emissions**  
These emissions come from sources owned or controlled by Invenergy.

**Scope 2 Emissions**  
These are indirect emissions from the consumption of purchased energy.

**Scope 3 Emissions**  
These are all other material indirect value chain emissions.

# Advancing Environmental Responsibility

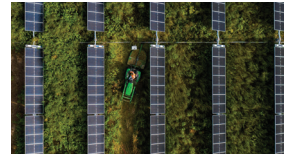


Our environmental compliance and strategy (ECS) team consults with state and federal governments as well as resource experts to ensure our projects incorporate real-time data insights and opportunities for resource impact minimization.



## Vegetation management

Vegetation management is an essential element of maintaining clean energy sites. Invenery utilizes a method called pre-seeding, which helps to minimize weed proliferation and soil erosion.



## Wildlife research & partnerships

We launched our Wildlife-Focused Solar Perimeter Fence Guide as a project planning resource for actionable strategies and we partnered with Cornell University to research ecosystem-monitoring networks for solar facilities.



## Construction best-practices

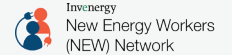
We implemented a Construction Environmental Plan, which outlines Invenery's environmental expectations for the responsible construction of its solar facilities.



# People Powering Growth

Our team has helped shape the company we are today, and it's thanks to their hard work and dedication that we continue to be innovators building a sustainable world.

## Invenery Affinity Groups



**39%**

Employee growth in 2022

**51%**

New positions filled by internal candidates through promotions and lateral development



# Empowering Communities

Being an active and responsible community partner is at the heart of everything we do and as we expanded into new regions across the globe, this philosophy continues to guide us.

Land costs & lease payments  
**\$224M**

Wages & benefits  
**\$107M**

Total economic investment in home communities in 2022:

**\$400M**

State & local taxes  
**\$69M**

**\$2.7M**

Total cause-based investments in 2022



To discover more about our environmental stewardship, our people, and our commitment to communities, download the full **2022 Invenery Impact Report**.



Scan QR to view the full report or visit [inveneryimpact2022.com](https://inveneryimpact2022.com)