

## Maternity Package – Rooms

Delivery Type	Premier Room	1-Bedded	2-Bedded	4-Bedded	Maximum Medisave Claimable (Delivery expenses)	Maximum Medisave Claimable (*Prenatal medical expenses)
<b>2 Days Hospital Stay</b>						
Normal Delivery	\$5,095.75	\$4,370.90	\$3,483.64	\$3,178.44	\$3,380	\$900
Normal Delivery with Epidural	\$5,540.47	\$4,857.04	\$3,963.24	\$3,614.44	\$3,380	\$900
Assisted Delivery	\$5,251.62	\$4,687.00	\$3,811.73	\$3,473.83	\$3,650	\$900
Assisted Delivery with Epidural	\$5,565.54	\$4,935.52	\$4,087.50	\$3,749.60	\$3,650	\$900
<b>3 Days Hospital Stay</b>						
Caesarean Section with GA	\$7,316.08	\$6,459.34	\$5,326.83	\$4,967.13	\$5,040	\$900
Caesarean Section with Epidural	\$7,178.74	\$6,328.54	\$5,173.14	\$4,789.46	\$5,040	\$900
Caesarean Section with Spinal	\$6,791.79	\$5,794.44	\$5,022.72	\$4,534.40	\$5,040	\$900
<b>3 Days Hospital Stay</b>						
Caesarean Section & Ligation with GA	\$7,874.16	\$6,839.75	\$5,636.39	\$5,184.04	\$5,100	\$900
Caesarean Section & Ligation with Epidural	\$7,594.03	\$6,570.52	\$5,501.23	\$5,025.99	\$5,100	\$900
Caesarean Section & Ligation with Spinal	\$7,509.01	\$6,486.59	\$5,320.29	\$4,848.32	\$5,100	\$900

\* Up to an additional \$900 for prenatal medical expenses can be claimed if the patient is eligible to claim under the Medisave Maternity Package.

If your baby requires separate admission due to medical reasons, Medisave claimable limit is \$1130 per day for the first two days and \$400 per day from the third day onwards.

### Terms & Conditions

- All package prices are estimated in SGD after prevailing government taxes.
- Deposits are required to be paid upon admission. Additional deposits may be required when hospital charges have exceeded the deposits paid.
- Original copies of any prenatal medical care receipts must be submitted upon admission for claim under the Medisave Maternity Package.
- Higher maternity package prices will apply in the event of any request for change of the booked room type after admission. For example, if a patient has stayed in a shared room (2/4 bedded) for the first night and moves to a single room on the subsequent night, the higher maternity package price will apply.
- All maternity packages include Transcutaneous Bilirubinometry (TcB), BCG & first Hepatitis B injection for baby (during hospital stay only) if baby's condition permits. Any unconsumed item in the package is not refundable, including vaccination.
- The maternity packages cover either Normal Delivery or Caesarean procedures and a standard set of commonly utilised items and treatment, 2 or 3 nights of accommodation, standard length of stay in nursery within 2 or 3 nights, and baby care services. Any additional medical supplies, medications, tests, or procedures that are deemed necessary for individual patients will be subject to additional charges.
- Mother care services, additional accommodation and treatment charges for baby are not included in the maternity package unless otherwise stated.
- The maternity package prices do not include any doctor's professional fees and attendance fees. Do enquire with your doctor about their fees.
- OT surcharges are applicable from 8pm to 7am daily. Surcharges for laboratory services and radiological/ultrasound procedures are applicable from 5pm to 8am of the following day (Mondays to Fridays), from 1pm on Saturdays, and the whole of Sundays and Public Holidays.
- Hospital discharge time is by 11 am (before lunch). An additional half-day room rate will be levied for discharges after 11 am, and a full-day room rate will be levied for discharges after 6 pm.
- FBI/SBI Membership discount of \$118 is for our Suites, Premier Room and 1-bedded rooms; and \$80 is for 2-bedded rooms only. The membership discount is not valid in conjunction with any other promotions or discounts unless otherwise stated.
- Thomson Medical Centre reserves the right to amend the terms and conditions of the maternity packages without prior notice.



## Deposits for Medisave Patients

Room Type	Premier Room	1-Bedded	2-Bedded	4-Bedded
Normal Delivery	\$5,000	\$4,500	\$3,500	\$3,300
Caesarean section	\$6,600	\$5,900	\$4,900	\$4,400

## Deposits for Non-Medisave Patients

Room Type	Premier Room	1-Bedded	2-Bedded	4-Bedded
Normal Delivery	\$8,000	\$7,500	\$7,000	\$6,500
Caesarean section	\$10,500	\$10,000	\$9,500	\$9,000

## Value-added Services

	Booking of Thomson Maternity Rooms	Booking of Thomson Maternity Suites
<b>Complimentary Amenities</b>		
Signature Fish & Papaya Soup	✓	✓
Longan & Red Date Tea	✓	✓
Food Nutrition – Kühlbarra Barramundi Cut & Kinmemai Better Brown Rice	✓	✓
Thomson Celebrating Life Loyalty Programme	✓	✓
Mummy Essential Bag	✓	✓
Baby Photo set	✓	✓
Companion Dinner <i>(for 1 night only)</i>	1-Bedded & Premier Room only (Dinner meal)	Candlelight Dinner for 2
Celebration Hamper		✓
In-room Mini Bar		✓
Limousine service for discharge <i>(Book with our Guest Services team at least 30 minutes before departure)</i>		✓
<b>Complimentary Companion Stay</b>		
1 companion stay with meal/s	1-Bedded & Premier Room only (includes breakfast)	✓ (includes 3 meals)
1 companion and 1 child accommodation stay with 3 meals		Family Suite only
<b>Complimentary Services</b>		
Preparing You Before discharge	✓	✓
Warm Personalised Farewell	✓	✓
Follow-up Calls (within 48 hours)	✓	✓
45-min visit and consultation by Lactation Consultant	✓	2 visits
In-room Personal Baby Bath Demo		✓
<b>Parking Facilities</b>		
Complimentary Parking	Premier Room only, Concessionary Parking for others	✓

**Thomson Maternity Suites** refers to: Thomson Premier Suite, Balmoral Suite, Lincoln Suite, Whitley Suite, Newton Suite, Dalvey Suite, Family Suite, Chancery Suite, and Buckley Suite.

**Thomson Maternity Rooms** refers to: Premier Room, 1-Bedded, 2-Bedded, and 4-Bedded.



Visit our website for more information



Register now

## Maternity Package – Suites

Delivery Type	Thomson Premier Suite	Balmoral Suite	Premier Suite (Lincoln, Whitley, Newton)	Dalvey Suite	Family Suite	Chancery Suite	Buckley Suite	Maximum Medisave Claimable (Delivery expenses)	Maximum Medisave Claimable (*Prenatal medical expenses)
---------------	-----------------------	----------------	--	--------------	--------------	----------------	---------------	--	---

### 2 Days Hospital Stay

Normal Delivery	\$10,236.19	\$9,124.39	\$8,426.79	\$7,772.79	\$7,598.39	\$7,118.79	\$6,900.79	\$3,380	\$900
Normal Delivery with Epidural	\$10,680.91	\$9,569.11	\$8,871.51	\$8,217.51	\$8,043.11	\$7,563.51	\$7,345.51	\$3,380	\$900
Assisted Delivery	\$10,392.06	\$9,280.26	\$8,582.66	\$7,928.66	\$7,754.26	\$7,274.66	\$7,056.66	\$3,650	\$900
Assisted Delivery with Epidural	\$10,705.98	\$9,594.18	\$8,896.58	\$8,242.58	\$8,068.18	\$7,588.58	\$7,370.58	\$3,650	\$900

### 3 Days Hospital Stay

Caesarean Section with GA	\$14,808.74	\$13,141.04	\$12,094.64	\$11,113.64	\$10,852.04	\$10,132.64	\$9,805.64	\$5,040	\$900
Caesarean Section with Epidural	\$14,671.40	\$13,003.70	\$11,957.30	\$10,976.30	\$10,714.70	\$9,995.30	\$9,668.30	\$5,040	\$900
Caesarean Section with Spinal	\$14,284.45	\$12,616.75	\$11,570.35	\$10,589.35	\$10,327.75	\$9,608.35	\$9,281.35	\$5,040	\$900

### 3 Days Hospital Stay

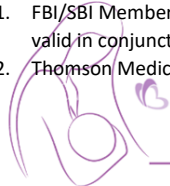
Caesarean Section & Ligation with GA	\$15,366.82	\$13,699.12	\$12,652.72	\$11,671.72	\$11,410.12	\$10,690.72	\$10,363.72	\$5,100	\$900
Caesarean Section & Ligation with Epidural	\$15,086.69	\$13,418.99	\$12,372.59	\$11,391.59	\$11,129.99	\$10,410.59	\$10,083.59	\$5,100	\$900
Caesarean Section & Ligation with Spinal	\$15,001.67	\$13,333.97	\$12,287.57	\$11,306.57	\$11,044.97	\$10,325.57	\$9,998.57	\$5,100	\$900

\* Up to an additional \$900 for prenatal medical expenses can be claimed if the patient is eligible to claim under the Medisave Maternity Package.

If your baby requires separate admission due to medical reasons, Medisave claimable limit is \$550 per day for the first two days and \$400 per day from the third day onwards.

### Terms & Conditions

- All package prices are estimated in SGD after prevailing government taxes.
- Deposits are required to be paid upon admission. Additional deposits may be required when hospital charges have exceeded the deposits paid.
- Original copies of any prenatal medical care receipts must be submitted upon admission for claim under the Medisave Maternity Package.
- Higher maternity package prices will apply in the event of any request for change of the booked room type after admission. For example, if a patient has stayed in a shared room (2/4 bedded) for the first night and moves to a single room on the subsequent night, the higher maternity package price will apply.
- All maternity packages include Transcutaneous Bilirubinometry (TcB), BCG & first Hepatitis B injection for baby (during hospital stay only) if baby's condition permits. Any unconsumed item in the package is not refundable, including vaccination.
- The maternity packages cover either Normal Delivery or Caesarean procedures and a standard set of commonly utilised items and treatment, 2 or 3 nights of accommodation, standard length of stay in nursery within 2 or 3 nights and baby care services. Any additional medical supplies, medications, tests, or procedures that are deemed necessary for individual patients will be subject to additional charges.
- Mother care services, additional accommodation and treatment charges for baby are not included in the maternity package unless otherwise stated.
- The maternity package prices do not include any doctor's professional fees and attendance fees. Do enquire with your doctor about their fees.
- OT surcharges are applicable from 8pm to 7am daily. Surcharges for laboratory services and radiological/ultrasound procedures are applicable from 5pm to 8am of the following day (Mondays to Fridays), from 1pm on Saturdays, and the whole of Sundays and Public Holidays.
- Hospital discharge time is by 11 am (before lunch). An additional half day room rate will be levied for discharges after 11 am and a full day room rate will be levied for discharges after 6 pm.
- FBI/SBI Membership discount of \$118 is for our Suites, Premier Room and 1-bedded rooms; and \$80 is for 2-bedded rooms only. The membership discount is not valid in conjunction with any other promotions or discounts unless otherwise stated.
- Thomson Medical Centre reserves the right to amend the terms and conditions of the maternity packages without prior notice.



## Deposits for Medisave Patients

Suite Type	Thomson Premier Suite	Balmoral Suite	Lincoln, Whitley, Newton Suite	Dalvey Suite	Family Suite	Chancery Suite	Buckley Suite
Normal Delivery	\$8,000	\$8,000	\$8,000	\$8,000	\$8,000	\$6,000	\$6,000
Caesarean section	\$8,500	\$8,500	\$8,500	\$8,500	\$8,500	\$7,000	\$7,000

## Deposits for Non-Medisave Patients

Suite Type	Thomson Premier Suite	Balmoral Suite	Lincoln, Whitley, Newton Suite	Dalvey Suite	Family Suite	Chancery Suite	Buckley Suite
Normal Delivery	\$9,500	\$9,500	\$9,500	\$9,500	\$9,500	\$9,500	\$9,500
Caesarean section	\$11,000	\$11,000	\$11,000	\$11,000	\$11,000	\$11,000	\$11,000

## Value added Services

	Booking of Thomson Maternity Rooms	Booking of Thomson Maternity Suites
<b>Complimentary Amenities</b>		
Signature Fish & Papaya Soup	✓	✓
Longan & Red Date Tea	✓	✓
Food Nutrition – Kuhlbarra Barramundi Cut & Kinmemai Better Brown Rice	✓	✓
Thomson Celebrating Life Loyalty Programme	✓	✓
Mummy Essential Bag	✓	✓
Baby Photo set	✓	✓
Companion Dinner <i>(for 1 night only)</i>	1-Bedded & Premier Room only (Dinner meal)	Candlelight Dinner for 2
Celebration Hamper		✓
In-room Mini Bar		✓
Limousine service for discharge <i>(Book with our Guest Services team at least 30 minutes before departure)</i>		✓
<b>Complimentary Companion Stay</b>		
1 companion stay with meal(s)	1-Bedded & Premier Room only (includes breakfast)	✓ (includes 3 meals)
1 companion and 1 child accommodation stay with 3 meals		Family Suite only
<b>Complimentary Services</b>		
Preparing You Before discharge	✓	✓
Warm Personalised Farewell	✓	✓
Follow-up Calls (within 48 hours)	✓	✓
45-min visit and consultation by Lactation Consultant	✓	2 visits
In-room Personal Baby Bath Demo		✓
<b>Parking Facilities</b>		
Complimentary Parking	Premier Room only, Concessionary Parking for others	✓

**Thomson Maternity Suites** refers to: Thomson Premier Suite, Balmoral Suite, Lincoln Suite, Whitley Suite, Newton Suite, Dalvey Suite, Family Suite, Chancery Suite, and Buckley Suite.

**Thomson Maternity Rooms** refers to: Premier Room, 1-Bedded, 2-Bedded, and 4-Bedded.



Visit our website for more information

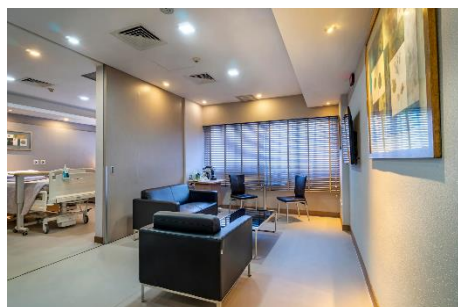


Register now

## Daily rates – Suites and Rooms

### Suites

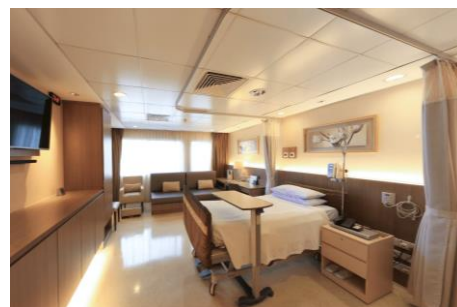
Suite Type	Thomson Premier Suite	Balmoral Suite	Lincoln, Whitley, Newton Suite	Dalvey Suite	Family Suite	Chancery Suite	Buckley Suite
Room Rate	\$2,998.00	\$2,488.00	\$2,168.00	\$1,868.00	\$1,788.00	\$1,568.00	\$1,468.00
Room Rate (With 9% GST)	\$3,267.82	\$2,711.92	\$2,363.12	\$2,036.12	\$1,948.92	\$1,709.12	\$1,600.12



Thomson Premier Suite



Balmoral Suite



Lincoln Suite



Whitley Suite



Family Suite



Chancery Suite

### Rooms

Room Type	Premier Room	1-Bedded	2-Bedded	4-Bedded
Room Rate	\$888.00	\$788.00	\$468.00	\$368.00
Room Rate (With 9% GST)	\$967.92	\$858.92	\$510.12	\$401.12



Premier Room



1-Bedded Room



2-Bedded Room

Scan to find out more



Visit our website for more information



Register now

