

Kurnell site investigation



Welcome

As part of Ampol's Future Energy and Decarbonisation Strategies, we are exploring how we can better support our customers, employees, and the communities in which we operate through playing a leading role in Australia's energy transition.

Ampol is Australia's leading transport energy distributor and retailer, with an ambition to achieve net zero emissions from operations by 2040.

At Kurnell, we are undertaking a strategic review to identify opportunities at the site. Today we have information displayed and project team members on hand to discuss our early investigations including a Battery Energy Storage System (BESS) at Kurnell.

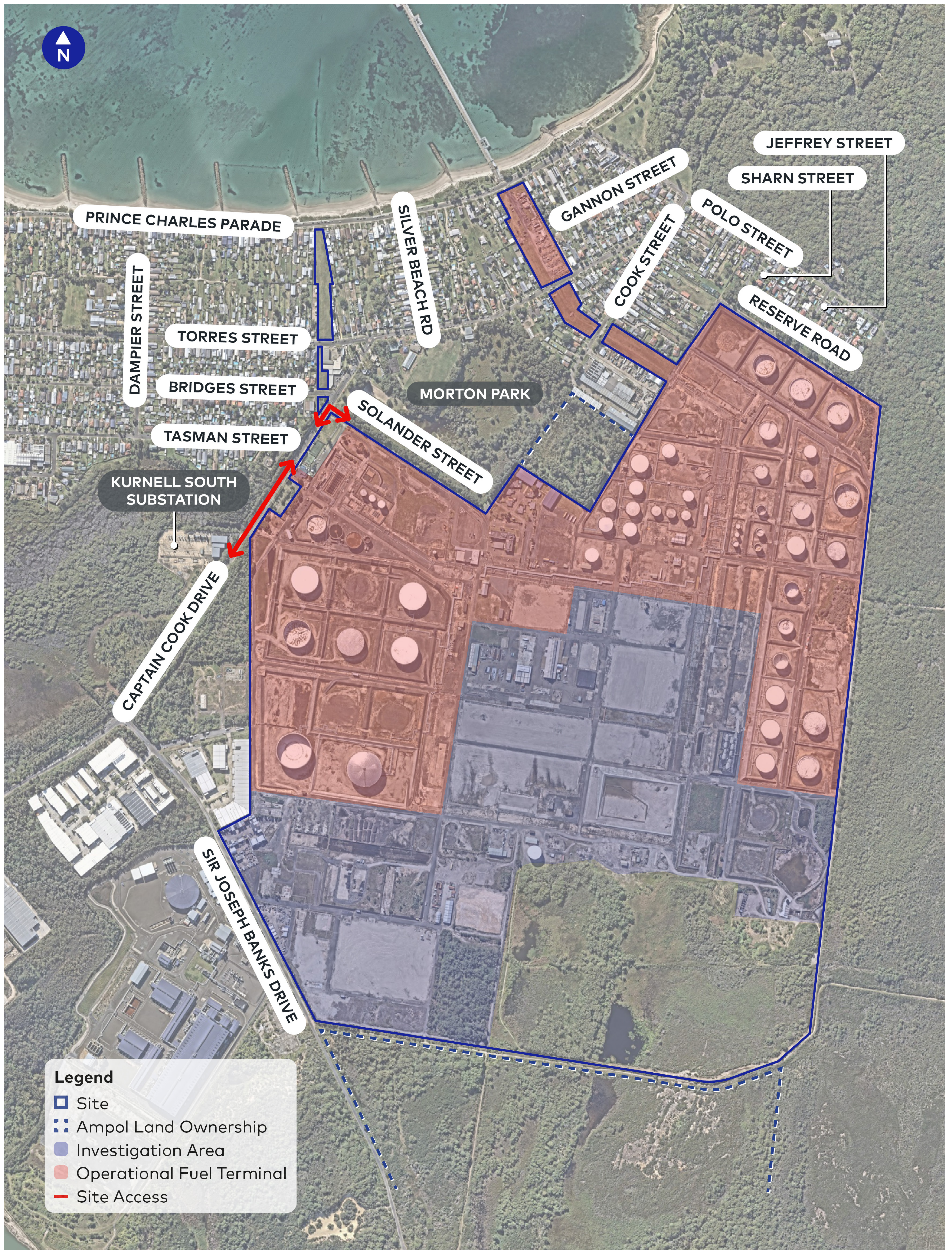
Ampol has proudly been a part of the Kurnell community for 70 years and we value and respect our local relationships.



We invite you to scan the QR code and fill out a survey to help us better understand the Kurnell community during our planning. We thank you for your input.



Kurnell site investigation area



Kurnell site investigation



A strategic review is being carried out to look at what opportunities exist for the unused land at Ampol's Kurnell site. The review is in the early investigation stage and will explore potential future uses of the land including a grid scale battery, also called a Battery Energy Storage System (BESS).

Battery Energy Storage System (BESS)

A Battery Energy Storage System (BESS), also known as a grid-scale battery, typically consists of multiple batteries installed together.

A BESS is used to store electrical energy. It can store energy when it is produced, to then be utilised at periods when there is high demand.

Grid-scale batteries are an essential part of the energy transition, storing energy to keep the lights on when the sun isn't shining and the wind isn't blowing.

Planning pathway

We are committed to working with you as we progress on this journey. Should the project go ahead, it will follow the NSW State Significant Development pathway which includes multiple stages of consultation and an opportunity to make a formal submission to the NSW Department of Planning and Environment.

Early investigation and strategic review

Community consultation

WE ARE HERE

Scoping report and Secretary's Environmental Assessment Requirement (SEARS)

Community consultation

Environmental Impact Statement (EIS) and exhibition

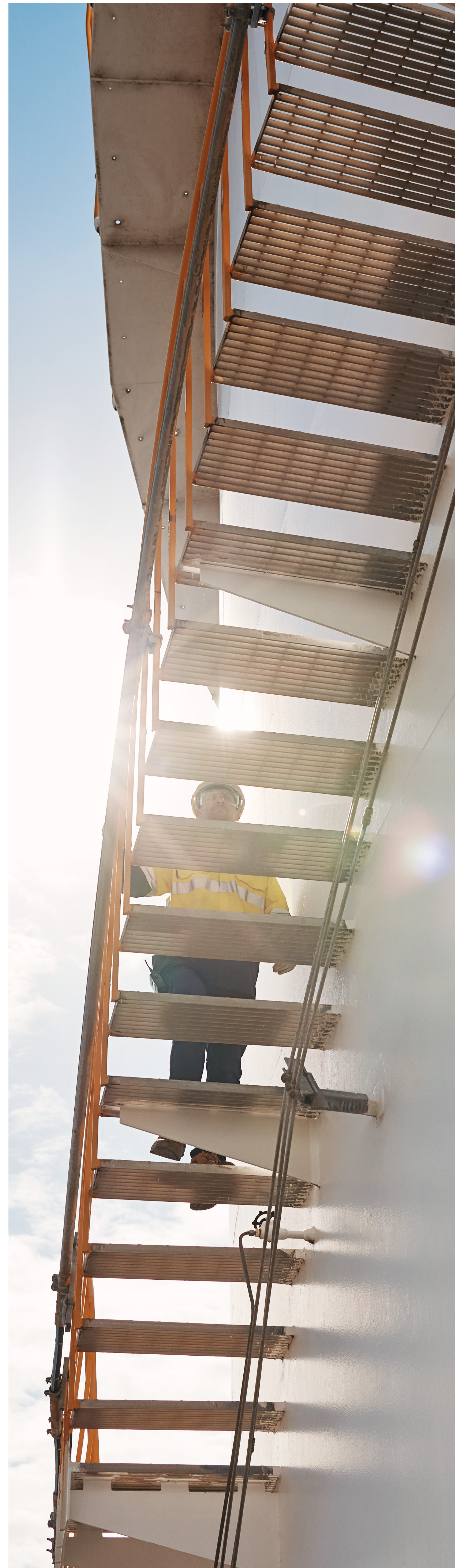
Community consultation during EIS exhibition and submission period

Response to submissions

Project determination

Construction

Operation



Kurnell site investigation



Have your say

1. How would you like us to engage with you about this review?

2. What are your thoughts on locating new energy solutions at our Kurnell Site?

3. How do you feel about locating a Battery Energy Storage System on our Kurnell Site?

