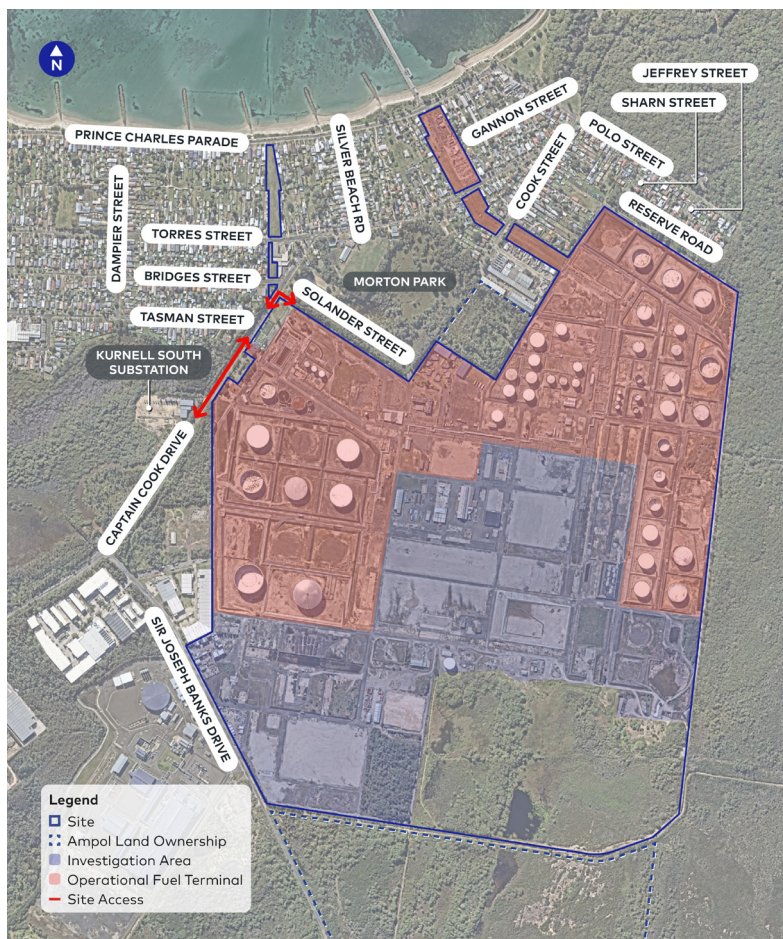


Future opportunities at our Ampol Kurnell site

Overview

We are currently exploring how we can better utilise the land at our site in Kurnell for the future.

Following the refinery closure and the demolition of redundant assets, remediation of the now vacant land has been undertaken. A strategic review is being carried out to look at what opportunities exist for this area of land. The review is in the early investigation stage and may include locating new energy solutions on the site such as a grid scale battery which aligns with our Future Energy and Decarbonisation strategies.



A Battery Energy Storage System (BESS), also known as a grid-scale battery, typically consists of multiple batteries installed together.

A BESS is used to store energy. It can store energy when it is produced, to then be utilised at periods when there is high demand.



Why Kurnell Ampol Terminal?

A BESS is ideally located near to electrical networks and electricity consumers; and Kurnell could be a good location for a BESS given its existing substation and proximity to Sydney.

Community Feedback

We are in the early investigation stage of our strategic review and are committed to working with you as we progress the opportunities for the Kurnell site.

Should the project progress, it will follow the NSW State Significant Development pathway which includes multiple stages of consultation and an opportunity to make a formal submission to the NSW Department of Planning and Environment.

Early investigation and strategic review

Community consultation

WE ARE HERE

Scoping report and Secretary's Environmental Assessment Requirement (SEARS)

Community consultation

Environmental Impact Statement (EIS) and exhibition

Community consultation during EIS exhibition and submission period

Response to submissions

Project determination

Construction

Operation

Contact us

Should you have any questions, please contact the Kurnell team:

1800 719 669 • community@ampol.com.au

