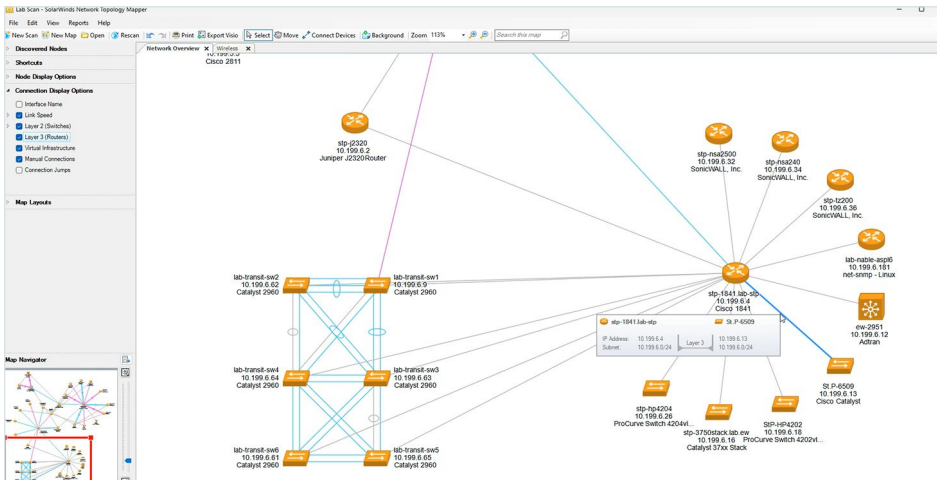


Network Topology Mapper

Map Your Network Automatically



Finally, you can put down your whiteboard markers and relax while **SolarWinds® Network Topology Mapper (NTM)** does the network mapping for you. Leveraging a unique multi-layer discovery technique, NTM automatically discovers your LAN or WAN and produces comprehensive, easy-to-view network diagrams that integrate OSI Layer 2 and Layer 3 topology data (including switch-to-switch, switch-to-node, and switch-to-router port connections). With two mouse clicks, this data can be exported into Microsoft Office® Visio® and easily shared with your colleagues.

Try It Free →

14 days, full version

WHY CHOOSE NETWORK TOPOLOGY MAPPER?

- **Automatically maps your network**, giving your team clear network topology visibility
- **Auto-detects all updates**, helping you save time and resources when making changes to your network
- **Allows you to create multiple maps from a single scan** and supports multiple discovery methods, including SNMP, ICMP, WMI, Cisco Discovery Protocol (CDP), VMware®, and Hyper-V®
- **Allows you to export maps** to Microsoft Visio, PDF, and PNG formats
- **Addresses reporting needs for PCI compliance**, FIPS 140-2, and other regulatory requirements



FEATURES

Auto-Discovery and Detailed Map Creation

NTM automatically discovers your entire network. After the initial scan, comprehensive and detailed network maps are created typically in just minutes. You can also edit the node details of map objects and connect network devices manually.

Map Export to Common Formats

Network Topology Mapper exports network maps to Microsoft Office Visio, PDF, and PNG formats.

Network Regulatory Compliance

Network Topology Mapper allows you to directly address PCI compliance and other regulations that require maintaining an up-to-date network diagram. NTM is also FIPS 140-2 compliant.

Multi-Level Network Discovery

Network Topology Mapper performs multi-level discovery to produce an integrated OSI Layer 2 and Layer 3 network map that includes detailed device information.

Auto-Detection of Changes to Network Topology

Network Topology Mapper automatically detects new devices and changes to network topology with scheduled network scanning.

Network Inventory Management

Network Topology Mapper lets you perform inventory management of hardware assets and automate report creation.

Inventory and Network Report Generation

Network Topology Mapper has robust reporting tools to help you keep track of inventory and network information.

SYSTEM REQUIREMENTS

Please refer to the [Network Topology Mapper documentation](#) for the latest system requirements.

TRY BEFORE YOU BUY

At SolarWinds, we believe you should try our network topology mapping software before you buy it. That's why we offer **free trials** that deliver **full product functionality**. Simply download and install the software. That means no complex service agreements. No professional services. No confusing pricing structures. No set-up charges. [Download your free, fully functional trial today.](#)

Try It Free →

14 days, full version

ABOUT SOLARWINDS

SolarWinds (NYSE:SWI) is a leading provider of simple, powerful, and secure IT management software built to enable customers to accelerate their digital transformation. Our solutions provide organizations worldwide—regardless of type, size, or complexity—with a comprehensive and unified view of today's modern, distributed, and hybrid network environments. We continuously engage with technology professionals—IT service and operations professionals, DevOps and SecOps professionals, and database administrators (DBAs)—to understand the challenges they face in maintaining high-performing and highly available IT infrastructures, applications, and environments. The insights we gain from them, in places like our [THWACK®](#) community, allow us to address customers' needs now, and in the future. Our focus on the user and our commitment to excellence in end-to-end hybrid IT management have established SolarWinds as a worldwide leader in solutions for observability, IT service management, application performance, and database management. Learn more today at www.solarwinds.com.

[Learn More →](#)[Visit our website](#)

For additional information, please contact SolarWinds at [866.530.8100](tel:866.530.8100) or email sales@solarwinds.com. To locate an international reseller near you, visit [SolarWinds Partner Page](#).

© 2025 SolarWinds Worldwide, LLC. All rights reserved. | 2503-EN

The SolarWinds, SolarWinds & Design, Orion, and THWACK trademarks are the exclusive property of SolarWinds Worldwide, LLC or its affiliates, are registered with the U.S. Patent and Trademark Office, and may be registered or pending registration in other countries. All other SolarWinds trademarks, service marks, and logos may be common law marks or are registered or pending registration. All other trademarks mentioned herein are used for identification purposes only and are trademarks of (and may be registered trademarks) of their respective companies.

This document may not be reproduced by any means nor modified, decompiled, disassembled, published or distributed, in whole or in part, or translated to any electronic medium or other means without the prior written consent of SolarWinds. All right, title, and interest in and to the software, services, and documentation are and shall remain the exclusive property of SolarWinds, its affiliates, and/or its respective licensors.

SOLARWINDS DISCLAIMS ALL WARRANTIES, CONDITIONS, OR OTHER TERMS, EXPRESS OR IMPLIED, STATUTORY OR OTHERWISE, ON THE DOCUMENTATION, INCLUDING WITHOUT LIMITATION NONINFRINGEMENT, ACCURACY, COMPLETENESS, OR USEFULNESS OF ANY INFORMATION CONTAINED HEREIN. IN NO EVENT SHALL SOLARWINDS, ITS SUPPLIERS, NOR ITS LICENSORS BE LIABLE FOR ANY DAMAGES, WHETHER ARISING IN TORT, CONTRACT OR ANY OTHER LEGAL THEORY, EVEN IF SOLARWINDS HAS BEEN ADVISED OF THE POSSIBILITY OF SUCH DAMAGES.