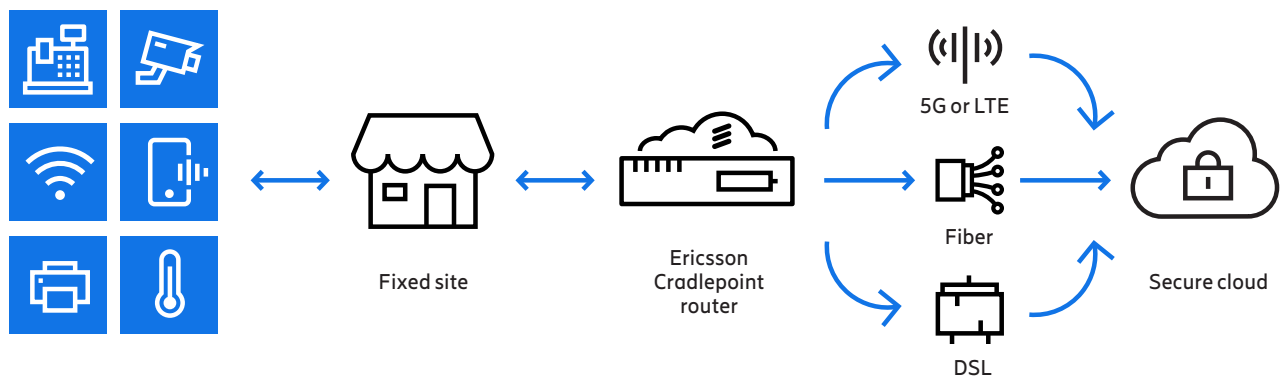


Hybrid WAN: Using LTE, 5G, and SD-WAN technologies in one solution

In stores, offices, and other locations, the continued influx of IoT devices, mobile workers, cloud-based apps, direct-to-Internet traffic and technology-expectant customers have made high availability and excellent agility — along with data security — more important than ever. Organizations are looking for multi-WAN, highly automated SD-WAN routers at the edge of the network.



Networking challenges

Meeting broad needs without expanding the networking stack

Networking needs in stores, offices, and other locations are increasingly complicated and wide-ranging, yet many organizations are expected to meet these needs without expanding the IT staff or adding expensive network devices to an already overloaded hardware stack.

Managing and troubleshooting networks without on-site IT personnel

Most branch locations aren't staffed with IT experts, which means Internet downtime and related network issues usually require third-party truck rolls or corporate travel for troubleshooting. This system is expensive and could leave critical applications such as Point-of-Sale down for a disastrous amount of time — or leave dangerous data security threats unaddressed.

“Our store managers’ core mission is to serve our customers, and we need to enable them to focus on that mission. When the Internet goes out, it takes managers off of the floor to pick up the phone, which is problematic. We don’t want them to lose 1-2 hours out of their day.”

Anthony Hoang, CIO, Evereve

Benefits of hybrid WAN solutions

Simplified infrastructure

All-in-one SD-WAN Ericsson Cradlepoint routers provide built-in LTE and 5G, multi-WAN functionality, easy VPN setup, Wi-Fi, routing, and a firewall while also supporting the network reliability, remote visibility, centralized control, automation, and application performance available through software-defined networking technologies.

Built-in security for direct internet access

Ericsson's enterprise wireless solution for fixed sites includes flexible Internet access, a firewall, content filtering, and IPS/IDS — enabling web, SaaS, and cloud traffic to go directly to the Internet — without additional appliances and multiple management systems.

Remote management of network functionality at many sites

With the sheer quantity of network applications running in most locations, cloud monitoring and troubleshooting features are the only way to cost-effectively manage WAN conditions at widespread locations.

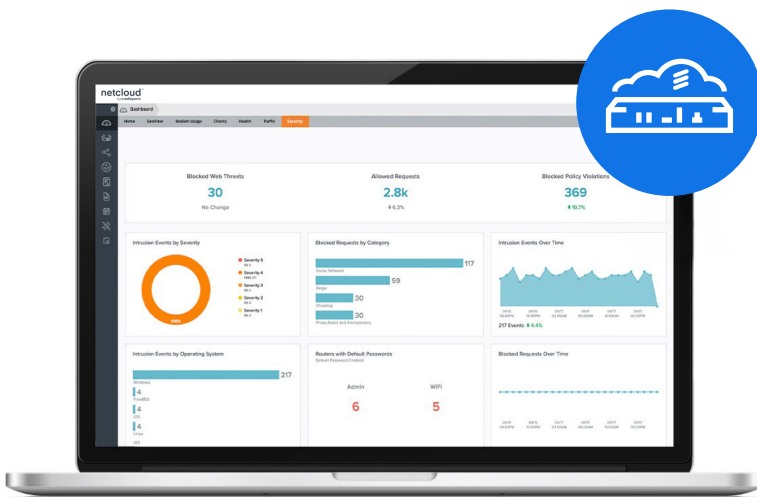
SD-WAN features for better application uptime and performance

Using business policies to automate path selection and network traffic choices is imperative for businesses that can't afford for certain applications to falter due to wavering signal strength or heightened latency.

“Having an all-in-one solution has been really helpful. The fact that wireless failover, IPsec VPN, and the firewall and security services could all be accomplished through the same box really attracted us to the Cradlepoint brand. There aren't many companies that offer that.”

Chris Vandre, infrastructure manager,
Life Storage

Ericsson NetCloud wireless edge routers



Learn more at cradlepoint.com