

Leading Light Wind

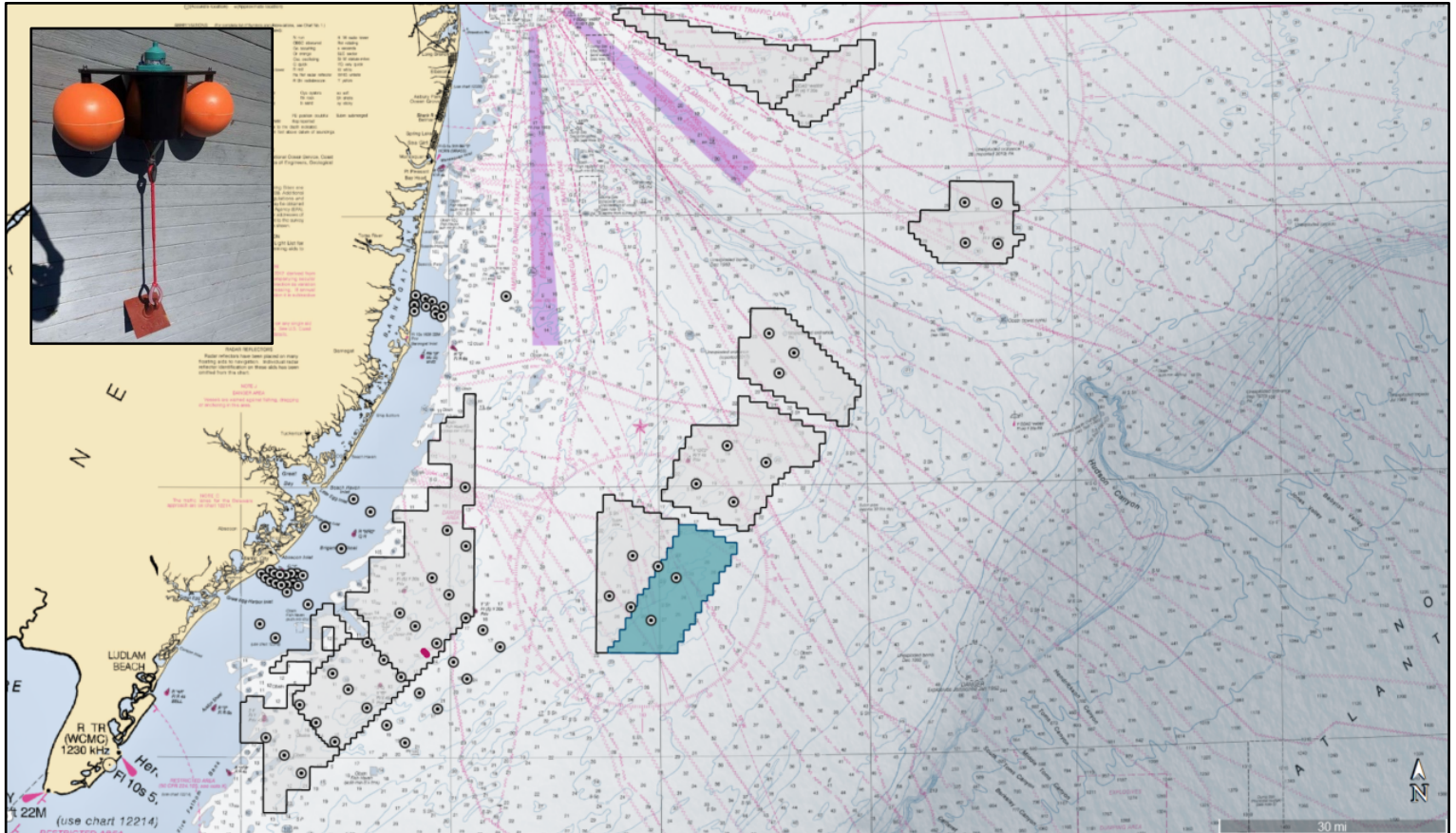


Acoustic Telemetry Receiver Deployments for New Jersey Research and Monitoring Initiative (November 2023-November 2025)

Since November 2023, researchers at Monmouth University and the New England Aquarium have deployed 81 acoustic telemetry receivers within the New York Bight, funded by the New Jersey Department of Environmental Protection Research and Monitoring Initiative ([NJ DEP RMI](#)). **This project is not Leading Light Wind sponsored;** however, there are four active receivers within the Leading Light Wind (OCS-A 0542) offshore lease, located at sites 20, 21, 29, and 30—locations are highlighted in the provided table.

Receivers will enable researchers to gather baseline information about the spatial/temporal habitat use, movements, residency patterns, and relative abundances of federally protected, prohibited, and commercially and recreationally important species within areas of interest for New Jersey. Receivers will be retrieved to the surface for downloading data and replaced approximately every 6 months.

Locations of deployed acoustic telemetry receivers for the NJ DEP RMI Program. Anchors are approximately 10 x 10 inches. Receivers are suspended approximately 4 feet above the seafloor.



NJ DEP RMI Acoustic Telemetry Receiver Locations

Positions in the LLW Lease (OCS-A 0542) are highlighted.

Site #	Latitude (DD)	Longitude (DD)	Latitude (DMS)	Longitude (DMS)
1	39.3350	-74.0406	N 39° 00' 06.144"	W 74° 02' 26.740"
2	39.3038	-74.0004	N 39° 08' 13.680"	W 74° 00' 01.494"
3	39.2700	-74.1181	N 39° 16' 44.465"	W 74° 07' 05.66"
4	39.2458	-74.0813	N 39° 04' 44.765"	W 74° 04' 52.660"
5	39.2608	-73.9605	N 39° 16' 11.348"	W 73° 07' 37.652"
6	39.2141	-74.0301	N 39° 02' 50.616"	W 74° 02' 20.627"
7	39.5021	-73.9607	N 39° 30' 07.452"	W 73° 07' 38.664"
8	39.4228	-74.0042	N 39° 05' 22.249"	W 74° 00' 15.190"
9	39.3935	-73.9595	N 39° 23' 36.737"	W 73° 07' 34.630"
10	39.4805	-74.2279	N 39° 00' 22.355"	W 74° 13' 40.580"
11	39.4571	-74.1876	N 39° 07' 25.452"	W 74° 11' 15.407"
12	39.4293	-74.2966	N 39° 25' 20.129"	W 74° 17' 42.500"
13	39.3890	-74.2574	N 39° 23' 18.406"	W 74° 15' 26.496"
14	39.2385	-73.9199	N 39° 04' 18.715"	W 73° 55' 11.755"
15	39.2070	-73.8791	N 39° 12' 25.200"	W 73° 59' 44.888"
16	39.1793	-73.9905	N 39° 00' 45.318"	W 73° 59' 58.249"
17	39.1481	-73.9582	N 39° 08' 53.236"	W 73° 07' 29.405"
18	39.3741	-73.5615	N 39° 02' 26.814"	W 73° 33' 41.346"
19	39.3001	-73.6180	N 39° 18' 00.522"	W 73° 37' 12.422"
20	39.3539	-73.5009	N 39° 21' 14.105"	W 73° 30' 35.582"
21	39.2792	-73.5670	N 39° 16' 44.965"	W 73° 35' 01.340"
22	39.7817	-73.2300	N 39° 04' 00.188"	W 73° 13' 48.250"
23	39.7083	-73.2068	N 39° 42' 29.927"	W 73° 12' 24.534"
24	39.7453	-73.1706	N 39° 04' 43.206"	W 73° 10' 14.286"
25	39.5755	-73.3332	N 39° 34' 31.634"	W 73° 19' 59.516"
26	39.5438	-73.2406	N 39° 52' 37.805"	W 73° 14' 58.679"
27	39.5057	-73.4081	N 39° 30' 20.581"	W 73° 20' 17.180"
28	39.4717	-73.3193	N 39° 08' 18.286"	W 73° 19' 09.408"
29	39.3329	-73.4581	N 39° 19' 58.786"	W 73° 27' 51.672"
30	39.2546	-73.5188	N 39° 05' 16.711"	W 73° 11' 01.500"
31	39.8563	-74.0781	N 39° 51' 22.522"	W 74° 04' 41.286"
32	39.8382	-74.0813	N 39° 00' 17.344"	W 74° 04' 52.554"
33	39.8538	-73.8607	N 39° 01' 13.608"	W 73° 03' 51.642"
34	39.8359	-74.0529	N 39° 00' 09.258"	W 74° 00' 09.258"
35	39.8498	-74.0551	N 39° 50' 57.420"	W 74° 03' 05.512"
36	39.8311	-74.0312	N 39° 49' 52.115"	W 74° 03' 18.760"
37	39.8447	-74.0386	N 39° 50' 41.210"	W 74° 02' 18.877"
38	39.8270	-74.0813	N 39° 04' 37.250"	W 74° 02' 32.420"
39	39.8403	-74.0813	N 39° 50' 25.680"	W 74° 01' 31.285"
40	39.8217	-74.0304	N 39° 49' 18.181"	W 74° 01' 49.490"
41	39.8352	-74.0110	N 39° 50' 06.857"	W 74° 00' 39.719"
42	39.8171	-74.0167	N 39° 49' 01.729"	W 74° 01' 00.170"
43	39.3086	-74.3876	N 39° 18' 30.805"	W 74° 23' 15.281"
44	39.2858	-74.3372	N 39° 17' 08.855"	W 74° 20' 14.350"
45	39.2494	-74.4527	N 39° 14' 57.689"	W 74° 27' 09.792"
46	39.2237	-74.4153	N 39° 13' 25.165"	W 74° 24' 55.980"
47	39.1582	-74.2788	N 39° 09' 29.549"	W 74° 16' 43.817"
48	39.1288	-74.2416	N 39° 07' 43.572"	W 74° 14' 29.688"
49	39.0945	-74.1974	N 39° 05' 40.960"	W 74° 11' 50.590"
50	39.0998	-74.3576	N 39° 05' 59.381"	W 74° 21' 27.536"

51	39.0670	-74.3185	N 39° 04' 01.139"	W 74° 19' 06.676"
52	39.0316	-74.2738	N 39° 01' 53.587"	W 74° 16' 25.608"
53	39.1221	-74.0717	N 39° 07' 19.409"	W 74° 04' 18.950"
54	39.0925	-74.0288	N 39° 05' 32.838"	W 74° 01' 43.550"
55	39.0624	-74.1500	N 39° 03' 44.600"	W 74° 08' 59.834"
56	39.0299	-74.1066	N 39° 01' 47.806"	W 74° 06' 23.900"
57	39.0387	-74.4382	N 39° 02' 19.219"	W 74° 26' 17.624"
58	39.0062	-74.3945	N 39° 00' 22.216"	W 74° 23' 40.189"
59	38.9731	-74.3538	N 38° 58' 23.770"	W 74° 21' 13.630"
60	40.0181	-72.7539	N 40° 01' 05.178"	W 72° 45' 14.800"
61	40.0162	-72.6760	N 40° 00' 58.396"	W 72° 40' 33.769"
62	39.9436	-72.7543	N 39° 56' 36.964"	W 72° 45' 15.300"
63	39.9408	-72.6754	N 39° 56' 26.837"	W 72° 40' 31.440"
64	39.2156	-74.1961	N 39° 12' 56.880"	W 74° 11' 46.680"
65	39.1834	-74.1567	N 39° 11' 00.334"	W 74° 09' 24.100"
66	39.1517	-74.1156	N 39° 09' 05.998"	W 74° 06' 56.660"
67	39.3423	-74.4492	N 39° 20' 32.147"	W 74° 26' 57.188"
68	39.3494	-74.4280	N 39° 20' 57.743"	W 74° 25' 40.789"
69	39.3347	-74.4390	N 39° 20' 04.942"	W 74° 26' 20.350"
70	39.3429	-74.4181	N 39° 20' 34.328"	W 74° 25' 05.200"
71	39.3286	-74.4276	N 39° 19' 43.430"	W 74° 25' 39.238"
72	39.3406	-74.4043	N 39° 20' 26.333"	W 74° 24' 15.646"
73	39.3247	-74.4146	N 39° 19' 28.765"	W 74° 24' 52.445"
74	39.3397	-74.3904	N 39° 20' 23.640"	W 74° 23' 25.483"
75	39.3213	-74.4011	N 39° 19' 16.594"	W 74° 24' 03.931"
76	39.3431	-74.3774	N 39° 20' 35.138"	W 74° 22' 38.561"
77	39.3226	-74.3875	N 39° 19' 21.367"	W 74° 23' 14.870"
78	39.3431	-74.3635	N 39° 20' 35.243"	W 74° 21' 48.578"
79	39.3252	-74.3734	N 39° 19' 30.745"	W 74° 22' 24.146"
80	39.3393	-74.3494	N 39° 20' 21.653"	W 74° 20' 57.678"
81	39.3202	-74.3610	N 39° 19' 12.785"	W 74° 21' 39.643"

Note: These locations are preliminary and may shift

Contact Information

For questions, or to report interactions with the deployed receivers, please contact the following investigators:

- **Dr. Keith Dunton** – Monmouth University; Lead Principal Investigator; kdunton@monmouth.edu
- **Dr. Jason Adolf** – Monmouth University; Co-Principal Investigator; jadolf@monmouth.edu
- **Dr. Jeff Kneebone** – New England Aquarium; Co-Principal Investigator; jkneebone@neaq.org
- **Dr. Michael Frisk** – Stony Brook University; Project Collaborator; michael.frisk@stonybrook.edu