



Z fc™

Capture your iconic moments

This moment



© jyota tomonori



© Yansu Kim



© Hoang Qi Rong



© misuzu

Atmosphere



© Fuka Kamata



© Eugenia Hanaguu



© Anton Kollo

Something to remember

Rotate dials. Feel each moment.

When was the last time you really took a picture? Concentrated on a scene. Observed it, framed it and changed settings — and finally pressed the shutter release to capture it in an everlasting picture.

The Nikon Z fc brings this to you in full.

It is a compact, lightweight, mirrorless camera coming in a body inspired by the FM2 — a Nikon icon. The tactile dial operation lets you slow down and enjoy each step of image-making.

Now take a step back from your busy life and start turning simple moments into special, timeless photographs.



Z fc



© Eugania Hanagnu



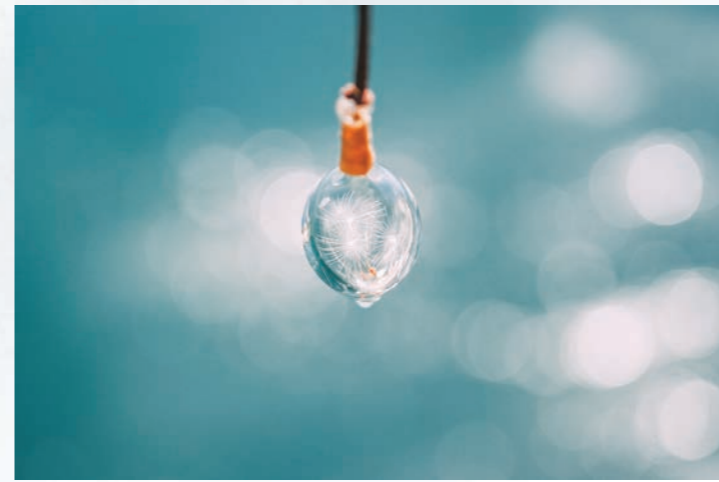
© Eugania Hanagnu



© Hoong Qi Rong



© Fuka Kamata



© misuzu



© Yansu Kim



© Fuka Kamata



Mirrorless meets iconic Nikon design

Photography is not simply about the outcome but also every step in between. The Nikon FM2, one of many Nikon's iconic cameras, enriched each of those steps with the joy of photography and was widely cherished by many users. The Z fc aims to follow in those footsteps and employs an exterior design with details carefully crafted to evoke that iconic camera. Beyond the camera body, you can also find a complementary design style in the two kit lenses, the NIKKOR Z DX 16-50mm f/3.5-6.3 VR and NIKKOR Z 28mm f/2.8 (SE).

An iconic look and feel

The atmosphere of the FM2 lives on in the Z fc's overall body size, as well as the balance and positioning of each part. The back of the camera monitor features leather-like grain to recreate the feel of a film camera.



Lenses completing the look

NIKKOR Z DX 16-50mm f/3.5-6.3 VR featuring silver coating and NIKKOR Z 28mm f/2.8 (SE) inspired by the FM2's contemporary manual NIKKOR lenses.



Logo from the 1970-80s
The camera body is engraved with the Nikon logo used on the camera bodies of the 1970-80s.



Round like the FM series
The eyepiece recreates the FM series' circular design.



Detail-oriented top body design
The positioning of dials and the design of the shutter-release button have been carefully determined to resemble the FM2.



Uncompromising craftsmanship
Each dial features carved-out aluminum knurling and engraved numbers on top.



Enjoy each step with tactile operation

Put your heart into each picture and enjoy every part of the process, feeling each step in the touch of your finger as you rotate the dials. The Z fc features three dials on the top body — for shutter speed, ISO sensitivity and exposure compensation — as well as a small window displaying the aperture. Together, they let you visually confirm basic camera settings at a glance. The easy-to-view electronic viewfinder (EVF) helps you concentrate on your scene, while the vari-angle, touchscreen monitor opens up a versatile range of shooting possibilities.





Wherever you go, whatever your style

The Z fc's design fits all kinds of styles and scenes while retaining a compact, lightweight form: You'll want to take it with you wherever you go. The basic Z fc kit* weighs less than a 600-ml plastic bottle of water, while its flat design without a grip makes it easier to slip the camera in and out of your bag, even with the kit lens attached. Whether in your bag or over your shoulder, the Z fc is a great companion for your everyday creativity.

* The Z fc and NIKKOR Z DX 16-50mm f/3.5-6.3 VR.

Flowers on streets, sunlight hitting tree leaves and sunsets over the sea.
I often find beauty in unintentional moments — Fuka Kamata

© Fuka Kamata



© Jide Alakija



© Lin Chuhan



© Anton Kollo

Beauty is calm. It needs to be observed quietly, discovered and experienced.
It is often overlooked and missed — Lin Chuhan

© Lin Chuhan



© Hoong Qi Rong



© Jide Alakija

By slowing down and taking the time to look around with this camera, I discover new moments in the world around me.



© Jide Alakija



© Yansu Kim



© Yansu Kim

My photos are about pure, natural moments in life — Yansu Kim



© Eugenia Hamagnu

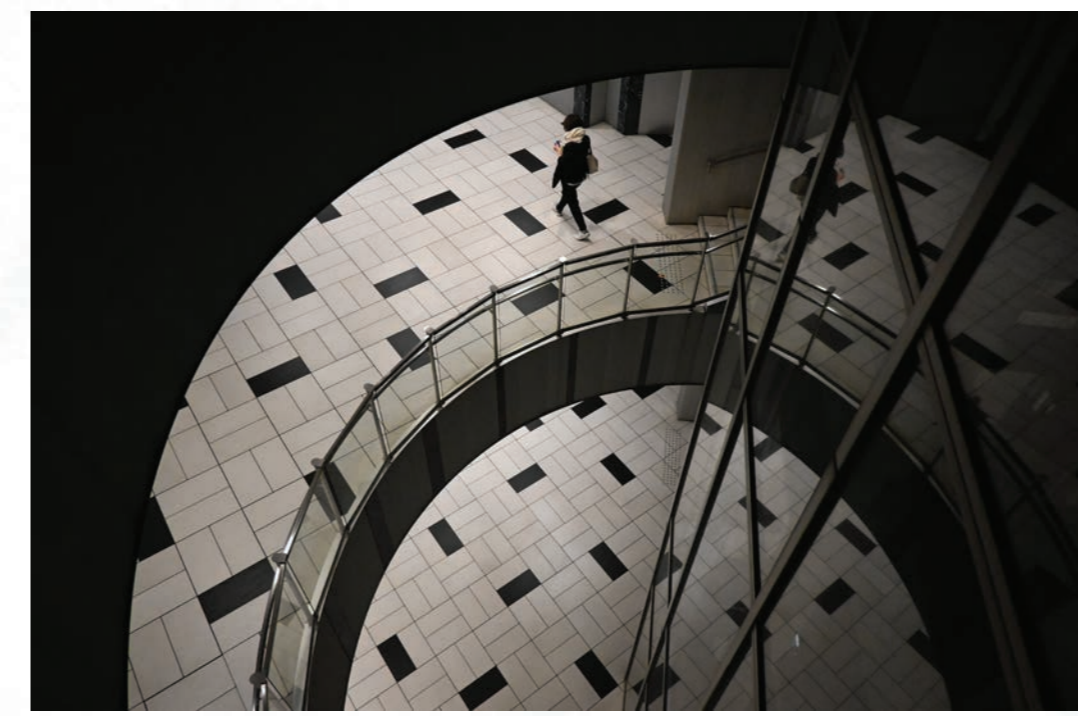


© Hoong Qi Rong

I like to shoot photos that make me feel some sort of nostalgia from moments that I've never actually experienced — Hoong Qi Rong



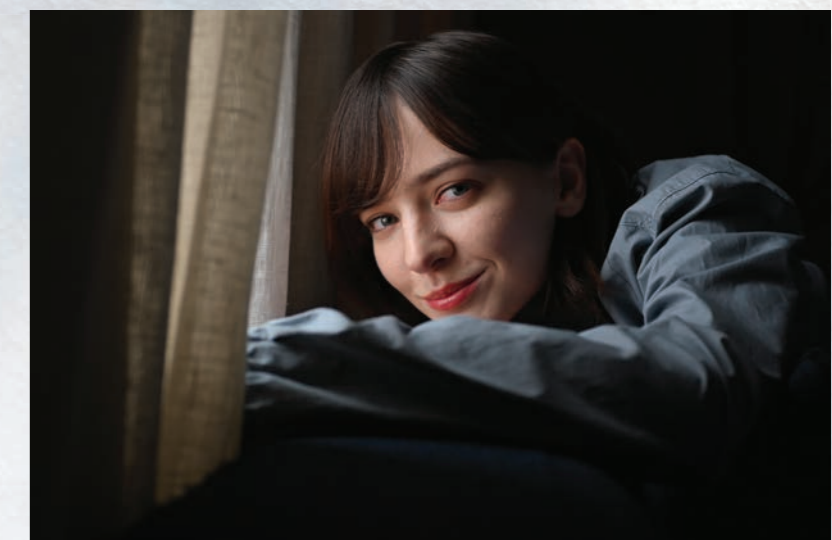
© Eugenia Hamagnu



Catch the eye of your friends — and pets!

Sharp focus on the subject's eyes powerfully enhances the impression that your images will make. The Z fc's Eye-Detection AF and Animal-Detection AF help you sharply capture the eyes of your family, friends and pets*, even when they're moving. The camera also intelligently recognizes the eyes of multiple subjects in the frame for both stills and video.

* Applies to dogs and cats.



Eye-Detection AF

Animal-Detection AF

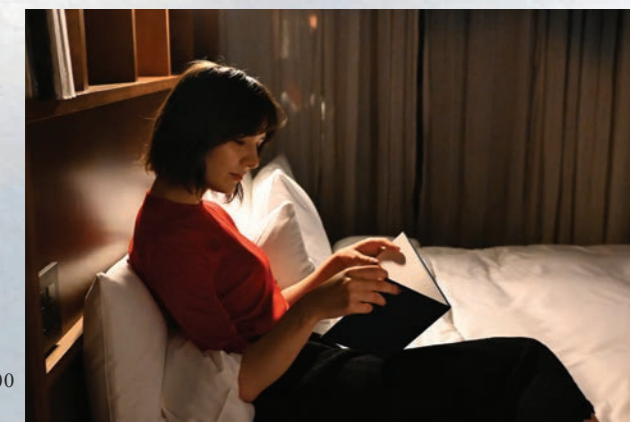
Incredible images, even in dark scenes

Experience image quality that couldn't possibly be achieved with your smartphone. The Z fc lets you raise the sensitivity up to ISO 51200*¹, delivering photos and videos with minimum noise, featuring clear details and textures. With the ISO sensitivity dial*², you can adjust the setting quickly, as well as confirm the changes being made in real time through the monitor or EVF, letting you enjoy each step of the adjustments while shooting.

*¹ Expandable up to 204800. The maximum standard sensitivity for video recording is ISO 25600.
*² ISO sensitivity settings cannot be changed in the menu, with touch operation.



ISO 6400



14

ISO 12800



15



Melancholic



Charcoal



Pure



Morning



Pop

Express your feelings, recreate the mood

The 20 Creative Picture Controls can add different nuances to your images. By setting them before the shoot, you can minimize the image deterioration often caused by postproduction and confirm the appearance in real time through the monitor or EVF. All these options are now at your fingertips and can be applied to both photos and video. In addition, eight more standard types of Picture Controls are also available.

Creative Picture Controls

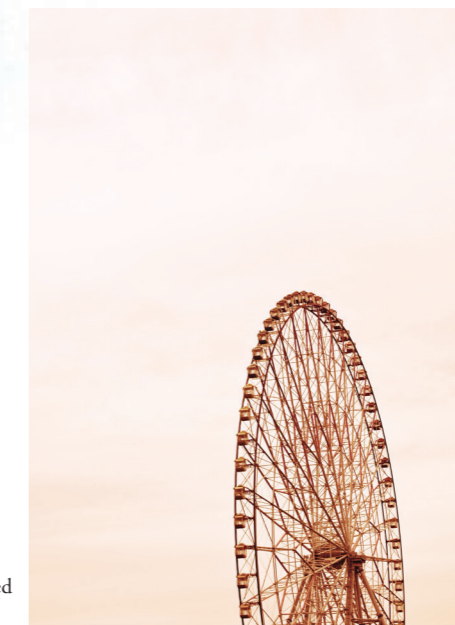
Dream / Morning / Pop / Sunday / Somber / Dramatic / Silence / Bleached / Melancholic / Pure / Denim / Toy / Sepia / Blue / Red / Pink / Charcoal / Graphite / Binary / Carbon

Picture Controls

Auto / Standard / Neutral / Vivid / Monochrome / Portrait / Landscape / Flat



Denim



Red



Toy



Everything from impressive 4K UHD/30p to vlogging

In addition to amazing stills, the Z fc lets you shoot 4K UHD/30p video* all on your own. Vlogging is easy thanks to the self-portrait mode, activated with the vari-angle screen turned to the front, together with Eye-Detection AF and the full-time AF (AF-F) mode, which tracks the subject during video recording. Slow-motion video and time-lapse video can also be created through simple operation.

* DX-format video without a crop.



Seamless transfer of images and videos

Transferring images and videos has never been easier and more stable with SnapBridge Ver. 2.8, Nikon's unique app that connects the camera and your smartphone. By installing the SnapBridge app on your smart device^{*1}, you can easily send stills and videos^{*2} via Wi-Fi® and Bluetooth®. In addition, two different automatic connection modes between a camera and your smart device are now selectable — foreground and background. The latest camera firmware can also be obtained via the app — much simpler than downloading to a memory card via computer.

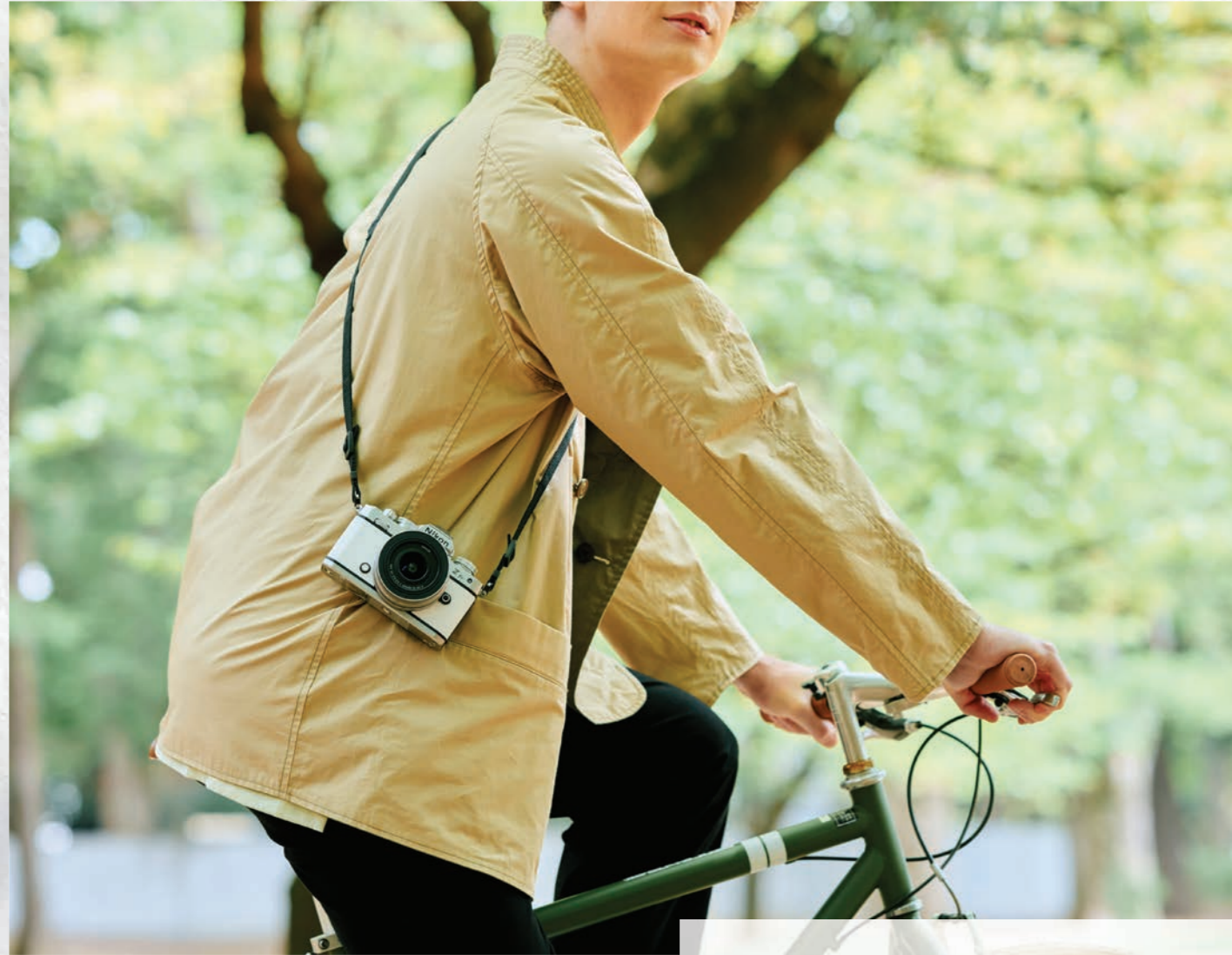
^{*1} Compatible with iPhone®, iPad® or smart devices running on the Android™ operating system. Available free from Apple App Store® and Google Play™. Please check Nikon's website for further information.

^{*2} Still images (RAW) and videos can only be transferred via Wi-Fi®.



Upgrade your online encounters

Connect the Z fc to your computer and let its image quality give your online communication a boost. Nikon's Webcam Utility software makes it extremely easy to establish connection between a Nikon camera and a computer. The compact body with its vari-angle monitor, and the combination of camera and NIKKOR Z DX 16-50mm f/3.5-6.3 VR, make the Z fc extra flexible — a perfect alternative to a webcam.



Natural gray



Amber brown



Sand beige



Coral pink

My color, my style

The Z fc isn't just a joy to shoot with: it's also a pleasure to simply carry around. It comes with Premium Exterior options that allow you to change the leather-toned material on the body depending on your individual taste and lifestyle. You can select from six color options — white, coral pink, mint green, sand beige, amber brown and natural gray — letting you customize the body color to best express yourself.



© Yansu Kim



© Yansu Kim



© Fuka Kamata



© Yansu Kim



© Yansu Kim



NIKKOR Z MC 50mm f/2.8

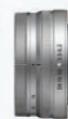
Reveal the incredibly intricate structure of the spines and texture of a cactus in dynamic, up-close images. This lens lets you depict your subject dynamically sharp against beautiful bokeh that is only possible with a micro lens and its fast aperture.

Explore different expressions

NIKKOR Z

Using different lenses dramatically transforms your images. The growing range of NIKKOR Z lenses means expanding opportunities to try out different expressions in outstanding image quality. The Nikon Z mount, the largest mount on the market*, with its 55-mm opening, invites a huge volume of light to the sensor, resulting in amazing high resolution and beautiful bokeh in images.

* Among full-frame mirrorless cameras as of June 2021.



NIKKOR Z DX 16-50mm f/3.5-6.3 VR

Capture a friend together with the expansive view of the sky, or a chic interior with a stylish atmosphere. This lightweight zoom lens covers a variety of scenes with edge-to-edge sharpness. The same silver coating as the Z fc is featured on the body.

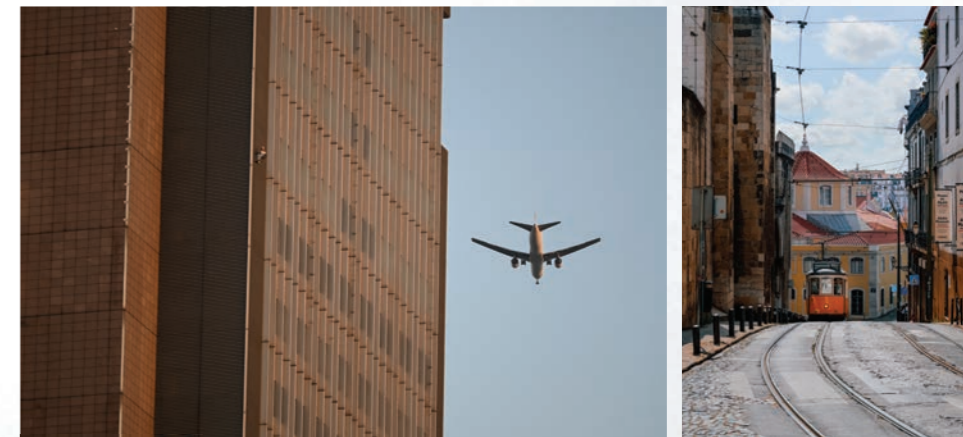


© Yansu Kim



NIKKOR Z 50mm f/1.8 S

Render a friend's radiant eyes and delicate skin texture with clear definition against natural, gradual bokeh even on a city street at night. One of the NIKKOR Z S-Line lenses, this lens redefines the perception of what an f/1.8 lens can achieve.



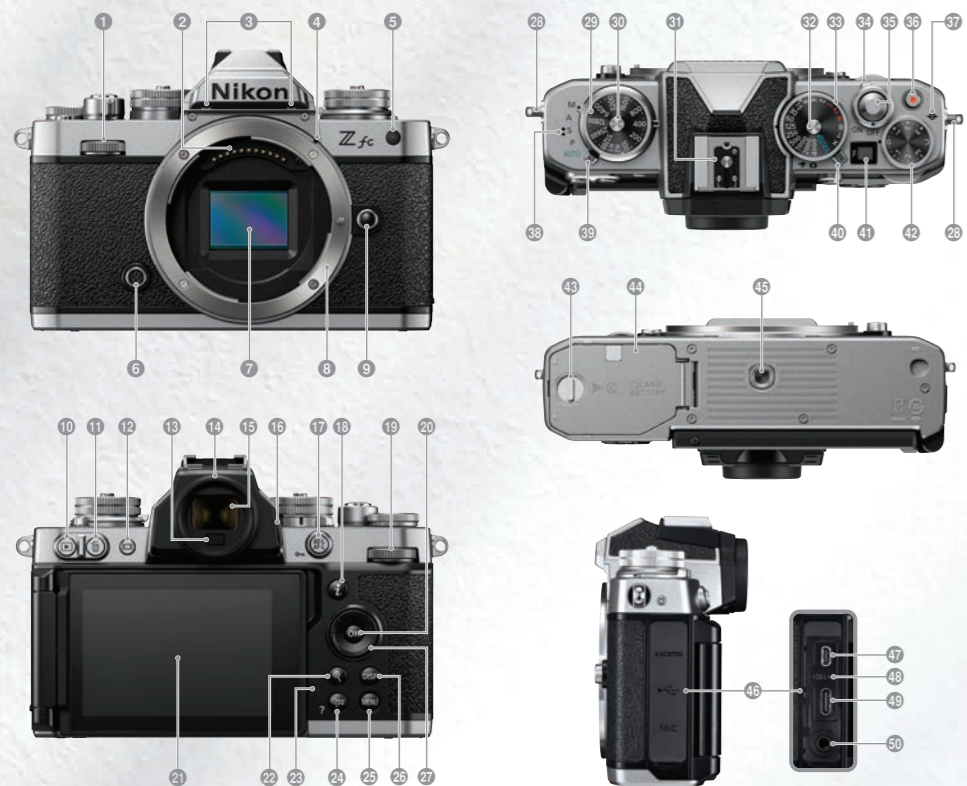
© Eugania Hanagnu



NIKKOR Z DX 50-250mm f/4.5-6.3 VR

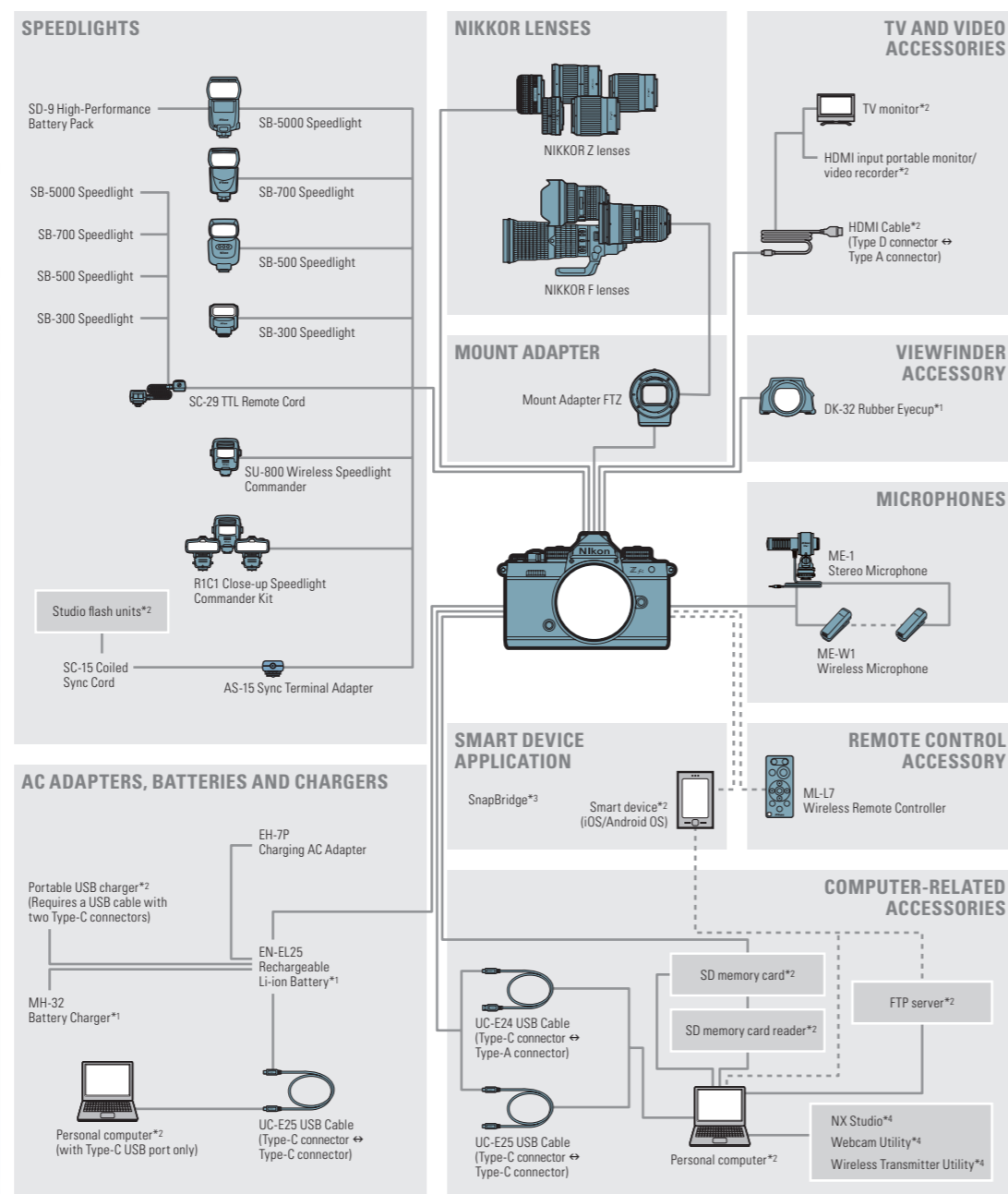
Get close to a distant subject like an airplane far up in the sky in high resolution with this powerful 5x zoom and VR. A tram viewed along a street can be uniquely framed by compressed buildings. The compression effect and large background bokeh make for impressive landscape photos and portraits.

NOMENCLATURE



- | | | |
|--|--|--|
| 1 Sub-command dial | 18 i button | 35 Shutter-release button |
| 2 CPU contacts | 19 Main command dial | 36 Video-record button |
| 3 Stereo microphone | 20 OK button | 37 Focal plane mark |
| 4 Lens mounting mark | 21 Monitor | 38 Speaker |
| 5 AF-assist illuminator/
Red-eye reduction lamp/
Self-timer lamp | 22 Playback zoom in button | 39 Mode selector |
| 6 Fn button | 23 Playback zoom out button/
Thumbnail button/
Help button | 40 Photo/video selector |
| 7 Image sensor | 24 Menu button | 41 Control panel |
| 8 Lens mount | 25 Display button | 42 Exposure compensation dial |
| 9 Lens release button | 26 Multi selector | 43 Battery-chamber/memory card slot
cover latch |
| 10 Playback button | 27 Eyelet for camera strap | 44 Battery chamber/memory card slot
cover |
| 11 Delete button | 28 ISO sensitivity dial | 45 Tripod socket |
| 12 Monitor mode button | 29 ISO sensitivity dial lock release | 46 Cover for HDMI, USB, and
microphone connectors |
| 13 Eye sensor | 30 ISO sensitivity dial lock release | 47 HDMI connector |
| 14 Rubber eyecup | 31 Accessory shoe (for optional flash
unit) | 48 Charge lamp |
| 15 Viewfinder | 32 Shutter-speed dial lock release | 49 USB connector |
| 16 Diopter adjustment control | 33 Shutter-speed dial | 50 Connector for external microphone |
| 17 AE and AF lock button/
Protect button | 34 Power switch | |

SYSTEM CHART



*1 Supplied accessories. *2 Non-Nikon products. *3 Can be downloaded from the application store of each smart device (free). *4 Can be downloaded from Nikon websites (free).

SPECIFICATIONS

Type of camera	Digital camera with support for interchangeable lenses
Lens mount	Nikon Z mount
Compatible lenses	<ul style="list-style-type: none"> Z mount NIKKOR lenses F mount NIKKOR lenses (mount adapter required; restrictions may apply)
Effective pixels	20.9 million
Image sensor	23.5 × 15.7 mm CMOS sensor (Nikon DX format)
Total pixels	21.51 million
File format	<ul style="list-style-type: none"> NEF (RAW): 12 or 14 bit JPEG: JPEG-Baseline compliant with fine (approx. 1:4), normal (approx. 1:8) or basic (approx. 1:16) compression NEF (RAW)+JPEG: Single photograph recorded in both NEF (RAW) and JPEG formats
Picture Control System	Auto, Standard, Neutral, Vivid, Monochrome, Portrait, Landscape, Flat, Creative Picture Controls (Dream, Morning, Pop, Sunday, Somber, Dramatic, Silence, Bleached, Melancholic, Pure, Denim, Toy, Sepia, Blue, Red, Pink, Charcoal, Graphite, Binary, Carbon); selected Picture Control can be modified; storage for custom Picture Controls
Storage media	SD (Secure Digital) and UHS-I compliant SDHC and SDXC memory cards
Viewfinder	1.0-cm/0.39-in., approx. 2360k-dot (XGA) OLED electronic viewfinder with color balance and auto and 7-level manual brightness controls
Frame coverage	Approx. 100% horizontal and 100% vertical
Magnification	Approx. 1.02× (50 mm lens at infinity, -1.0 m ⁻¹)
Monitor	7.5-cm/3.0-in., approx. 1040k-dot vari-angle TFT touch-sensitive LCD with 170° viewing angle, approximately 100% frame coverage, and color balance and 11-level manual brightness controls
Shutter type	Electronically controlled vertical-travel focal-plane mechanical shutter; electronic front-curtain shutter; electronic shutter
Shutter speed	<ul style="list-style-type: none"> Using the shutter-speed dial: 1/4000 to 4 s (1 step), bulb, time, X (Flash sync) Using the main command dial: 1/4000 to 30 s (1/3 step, can be extended up to 900 s in mode M), bulb, time, X (Flash sync)
Release modes	Single frame, Continuous L, Continuous H, Continuous H (extended), Self-timer
Approximate frame advance rate (Measured by in-house tests)	<ul style="list-style-type: none"> Continuous L: Approx. 1 to 4 fps Continuous H: Approx. 5 fps Continuous H (extended): Approx. 11 fps
Exposure metering system	TTL metering using camera image sensor
Exposure metering modes	<ul style="list-style-type: none"> Matrix Center-weighted Spot Highlight-weighted
Metering range (ISO 100, f/2.0 lens, 20°C/68°F)	-4 to 17 EV
ISO sensitivity (Recommended Exposure Index)	ISO 100 to 51200 in steps of 1/3; can also be set to approx. 1 EV above ISO 51200 (ISO 102400 equivalent) or to approx. 2 EV above ISO 51200 (ISO 204800 equivalent); auto ISO sensitivity control available
Active D-Lighting	Can be selected from auto, extra high, high, normal, low or off
Autofocus	Hybrid phase-detection/contrast AF with AF assist
AF detection range (Photo mode, AF-S, ISO 100, f/1.8 lens, 20°C/68°F)	-4.5 to +19 EV (without low-light AF: -3 to +19 EV)
Focus point (Photo mode, DX format, single-point AF)	209 focus points
AF-area modes	Pinpoint AF; single-point AF; dynamic-area AF; wide-area AF (S); wide-area AF (L); wide-area AF (L-people); wide-area AF (L-animals); auto-area AF; auto-area AF (people); auto-area AF (animals); pinpoint AF and dynamic-area AF available in photo mode only

Flash control	TTL: i-TTL flash control; i-TTL balanced fill-flash is used with matrix, center-weighted, and highlight-weighted metering, standard i-TTL fill-flash with spot metering
Flash modes	Front-curtain sync, slow sync, rear-curtain sync, red-eye reduction, red-eye reduction with slow sync, off
Nikon Creative Lighting System (CLS)	i-TTL flash control, optical Advanced Wireless Lighting, FV lock, Color Information Communication, auto FP high-speed sync
White balance	Auto (3 types), natural light auto, direct sunlight, cloudy, shade, incandescent, fluorescent (3 types), flash, choose color temperature (2500 K to 10000 K), preset manual (up to 6 values can be stored), all with fine-tuning except choose color temperature
Bracketing types	Exposure and/or flash, white balance, and ADL
Video metering system	TTL metering using camera image sensor
Video metering modes	<ul style="list-style-type: none"> Matrix Center-weighted Highlight-weighted
Frame size (pixels) and frame rate	<ul style="list-style-type: none"> 3840 × 2160 (4K UHD); 30p (progressive), 25p, 24p 1920 × 1080; 120p, 100p, 60p, 50p, 30p, 25p, 24p 1920 × 1080 slow-motion; 30p (x4), 25p (x4), 24p (x5)
File format	MOV, MP4
Video compression	H.264/MPEG-4 Advanced Video Coding
Audio recording format	Linear PCM (for video recorded in MOV format), AAC (for video recorded in MP4 format)
Audio recording device	Built-in stereo or external microphone with attenuator option; sensitivity adjustable
Video ISO sensitivity (Recommended Exposure Index)	<ul style="list-style-type: none"> M: Manual selection (ISO 100 to 25600 in steps of 1/3); auto ISO sensitivity control (ISO 100 to 25600) available with selectable upper limit P, S, A: Auto ISO sensitivity control (ISO 100 to 25600) with selectable upper limit ☺: Auto ISO sensitivity control (ISO 100 to 25600)
Video Active D-Lighting	Can be selected from extra high, high, normal, low or off
Other video options	Time-lapse video recording, electronic vibration reduction, time codes
USB	Type C USB connector (SuperSpeed USB); connection to built-in USB port is recommended
HDMI output	Type D HDMI connector
Audio input	Stereo mini-pin jack (3.5-mm diameter; plug-in power supported)
Wi-Fi	Available
Bluetooth	Available
Battery	One EN-EL25 Rechargeable Li-ion Battery
Charging AC adapter	EH-7P Charging AC Adapter (available separately)
Dimensions (W × H × D)	Approx. 134.5 × 93.5 × 43.5 mm/5.3 × 3.7 × 1.8 in.
Weight	Approx. 445 g/15.7 oz. with battery and memory card but without body cap; approx. 390 g/13.8 oz. (camera body only)
Operating environment	Temperature: 0°C to 40°C (+32°F to 104°F); Humidity: 85% or less (no condensation)
Supplied accessories (may differ by country or area)	EN-EL25 Rechargeable Li-ion Battery, MH-32 Battery Charger, DK-32 Rubber Eyecup, AN-DC23 Strap, BF-N1 Body Cap

• The SD, SDHC and SDXC logos are trademarks of the SD-3C, LLC. • HDMI, the HDMI logo and High-Definition Multimedia Interface are trademarks or registered trademarks of HDMI Licensing LLC. • Wi-Fi® is a trademark or registered trademark of the Wi-Fi Alliance®. • The Bluetooth® word mark is a registered trademark owned by Bluetooth SIG, Inc. and any use of such marks by Nikon Corporation is under license. • Other products and brand names are trademarks or registered trademarks of their respective companies. • Images in viewfinders, on LCDs and monitors shown in this material are simulated.





The story behind the Z fc

The name Nikon Z fc represents one of this camera's roles: to communicate the history of the brand with its more than 70 years of dedicated camera manufacturing, connecting the past, present and the future. The letter "f" stands for the fusion of tactile precision mechanics and high image quality, both extensively developed through decades of designing and manufacturing image-making tools. The "f" also signifies models with symbolic importance in Nikon's history. The letter "c", meanwhile, conveys Nikon's wish for this camera, with all its inherited tradition, to be used by anyone, anywhere, "casually".

Specifications and equipment are subject to change without any notice or obligation on the part of the manufacturer. June 2021 ©2021 Nikon Corporation



WARNING

TO ENSURE CORRECT USAGE, READ MANUALS CAREFULLY BEFORE USING YOUR EQUIPMENT.

