

COOLPIX.
incredible digital



At the heart of the image™

COOLPIX P80



Nikon
COOLPIX P80

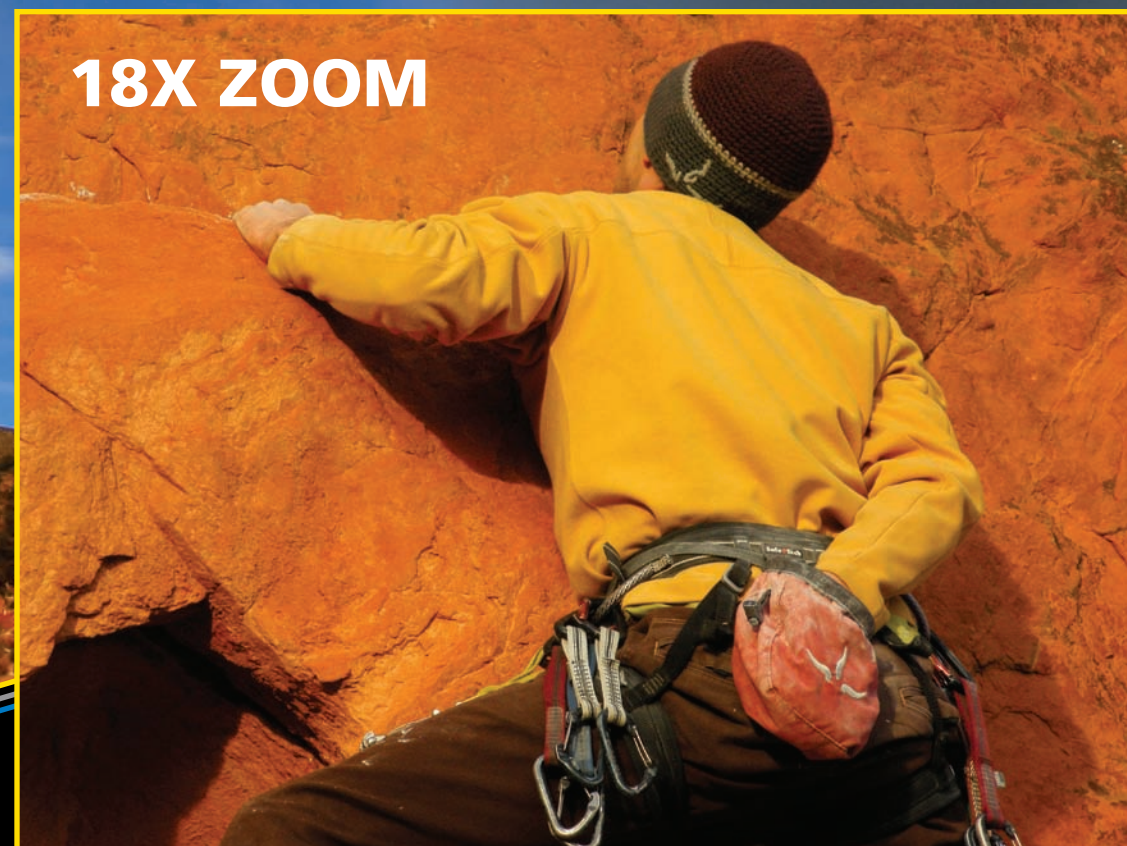
- 10.1**
Effective
Megapixels
- 18X**
Optical
Zoom-NIKKOR
Glass Lens
- 2.7"**
Incredible,
Bright LCD
Screen
- VR**
Optical
Image
Stabilization
- 6400**
ISO
Capability



Nikon Inc.,
1300 Walt Whitman Road, Melville, N.Y. 11747-3064 nikonusa.com / 1800-Nikon-UX

CDP-P80-01-04/08 / 08-113

COOLPIX PERFORMANCE
passion made powerful



Nikon COOLPIX P80

Key Features

- **10.1 Megapixels** for stunning prints as large as 16x20 inches
- **World's smallest* 18x zoom camera**
- **18x Optical zoom-NIKKOR Glass Lens** for incredibly, sharp clear images
- **Optical VR image stabilization**
- **ISO 6400 capability****
- **Incredible, bright 2.7-inch LCD** for easy composing and sharing of your pictures
- **Electronic viewfinder for shooting in all light conditions**
- **Optimize image (Monochrome filter effect)**
- **Distortion control**
- **Exposure modes (P/S/A/M)**

The world's most compact super-telephoto camera*



The COOLPIX P80 offers the unbeatable compositional freedom of an 18x Zoom-NIKKOR lens covering everything from 27mm wide-angle to 486mm super-telephoto shooting. And it squeezes all this photographic power into the smallest body in the class for even greater freedom.

VR image stabilization



Nikon's image sensor shift VR image stabilization compensates for camera shake to produce clearer, sharper results in lower light or unsteady condition. VR's stabilizing effects also help you shoot more smoothly and easily.

ISO 6400 capability**



Light sensitivity range up to ISO 6400 with manual control, along with auto control (ISO 64-800) and High ISO (ISO 64-1600) settings, creates new opportunities to take sharper, more natural-looking photos in lower light conditions, or to capture fast-moving subjects with outstanding clarity.

Advanced shooting modes (P, S, A and M)

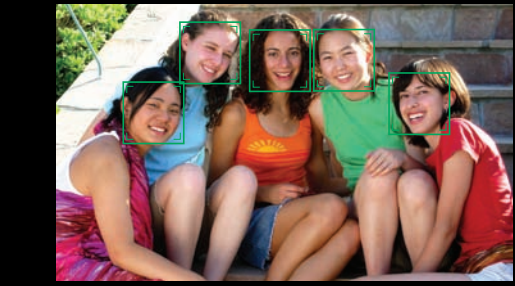
The mode dial provides quick access to greater personal control over camera operation and the unlimited creative possibilities offered by Programmed Auto [P], Shutter-priority Auto [S], Aperture-priority Auto [A] and Manual [M] exposure modes.

Sport Continuous Mode

High-speed capture settings help keep you ahead of most any action scene you wish to shoot. The COOLPIX P80 can shoot as many as 30 consecutive pictures* at 13 fps in Sport Continuous Mode.

* Features available only for image sizes of 3M (2048 x 1536) or smaller.

In-Camera Premium Features!



Face-Priority AF
Automatically finds and focuses on up to 12 faces to ensure superb portraits with clear, crisp focus.



Simply better portraits



In-Camera Red-Eye Fix™
This in-camera feature automatically fixes most typical occurrences of red-eye.



D-Lighting
Compensates for underexposed images or insufficient flash by automatically adding light and detail to selected shots where needed, without affecting properly exposed areas.

Bring Your Circle Closer.
my **Picturetown**
FREE photo storage and sharing

* Among competing models equipped with 18x zoom as of April 10, 2008 (according to research conducted by NIKON CORPORATION).
** ISO 3200 and 6400 settings are available only for image sizes of 3M (2048 x 1536) or smaller.
Sample photos for illustrative purposes

closer encounters

incredible 18x zoom in a compact design