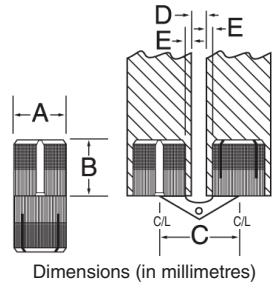


Concealed Barrel Hinges

Easily Installed

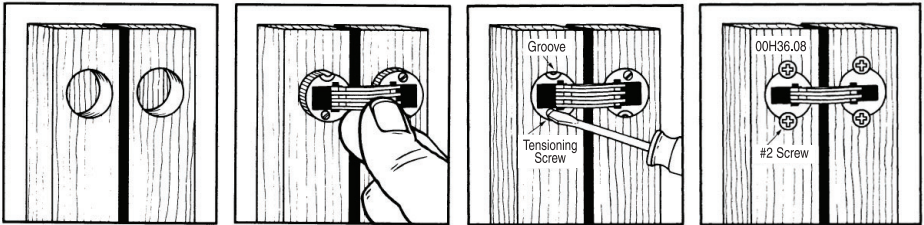
Secure mounting in wooden door or panel is assured by tightening tensioning screw on all models except 00H36.08.

Templates are not available for barrel hinges. Not recommended for vertical or load bearing applications. No load recommendations available, for light applications only.



Item #	Min. Door Thickness	Drill Bit (mm)	Screw Size	A	B	C	D min.	E max.	Distance from Edge Facing Opening
00H36.08	7/16"	8.2 mm	#2	8.18	9.9	11.6	1.9	0.8	4.8
00H36.10	1/2"	10 mm	#3*	10	11.5	15.7	2	1.8	6.8
00H36.12	5/8"	12 mm	#4*	12	13.3	19	2.7	2.1	8.1
00H36.14	3/4"	14 mm	#6*	14	15.5	23	3	3	9.5
00H36.16	7/8"	16 mm	#6*	16	16.5	23.5	3	2.3	10.6
00H36.18	1 1/8"	18 mm	#6*	18	18	27	3	3	11.5
00H36.24	1 1/4"	24 mm	#10*	24	24.9	35.1	4.1	3.5	16.5

*If desired, a customer supplied secondary screw may be installed in the groove that is 180 degrees from the tensioning screw; this is optional.



It is important that all hinges are in line.

Note: Align the barrel hinge properly before inserting in into the wood. The barrel hinge isn't designed to be turned once installed.