

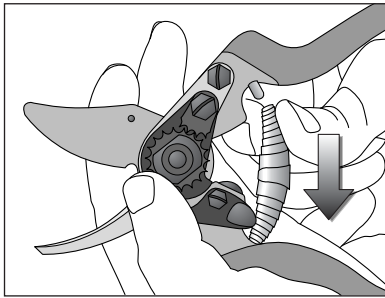
Pruning Tips

When pruning diseased wood, make sure you dip your pruner in a strong solution of chlorine bleach between cuts. This will prevent the spreading of infections to other parts of the tree or to other trees.

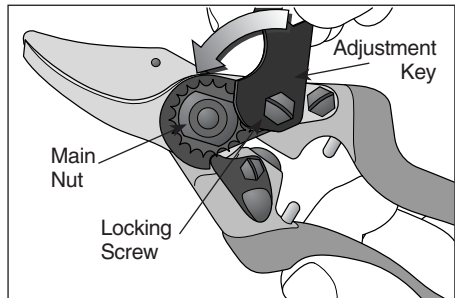
For blade protection, we recommend using a rust inhibitor. Spray a small amount onto the blade area after each use to prevent corrosion. Wipe away any excess.

A pruner sharpening jig makes it easy to keep your pruner sharp and in good working condition. Should you damage the blade, a replacement blade is included.

Replacing the Blade

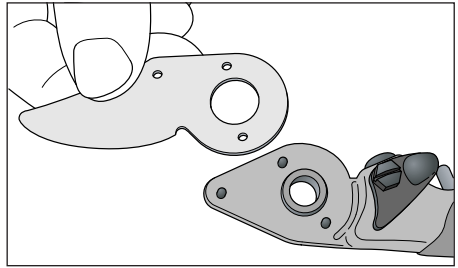
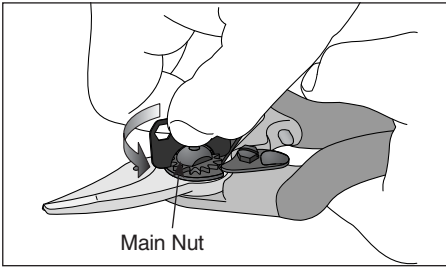


1. Remove the spring.

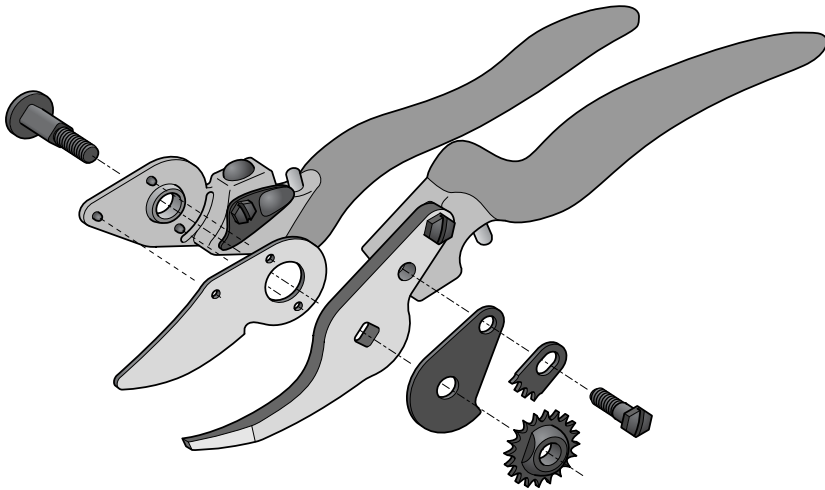


2. Use the included adjustment key to loosen and remove the locking screw.

***Note:** The fasteners on the pruner were fixed firmly at the factory and may, at first, be difficult to loosen with the adjustment key. A screwdriver or wrench may be used instead.*



3. Loosen and remove the main nut and bolt, using the adjustment key.
4. Take the pruner apart, keeping all the parts organized for easy reassembly.
5. Insert the new blade and reassemble. Do not overtighten the main nut, as this would affect the operation of the pruner. If the pruner feels stiff once assembled, loosen the main nut.



Exploded view of pruner assembly.