

Pruning Tips

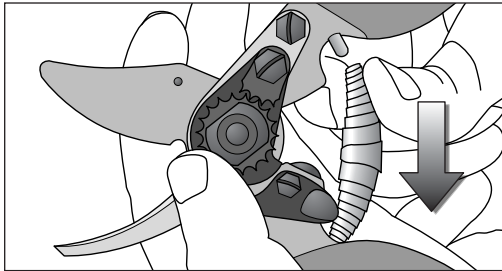
When pruning diseased wood, make sure you dip your pruner in a strong solution of chlorine bleach between cuts. This will prevent the spreading of infections to other parts of the tree or to other trees.

For blade protection, we recommend using a rust inhibitor. Spray a small amount onto the blade area after each use to prevent corrosion. Wipe away any excess.

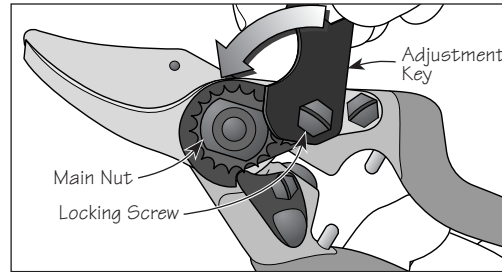
A pruner sharpening jig makes it easy to keep your pruner sharp and in good working condition. Should you damage the blade, a replacement blade is included.

Replacing the Blade

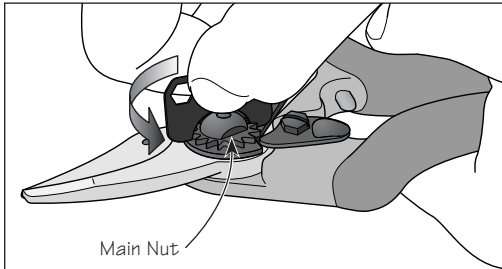
Note: The fasteners on the pruner were fixed firmly at the factory and may, at first, be difficult to loosen with the adjustment key. A screwdriver or wrench may be used instead.



1. Remove the spring.

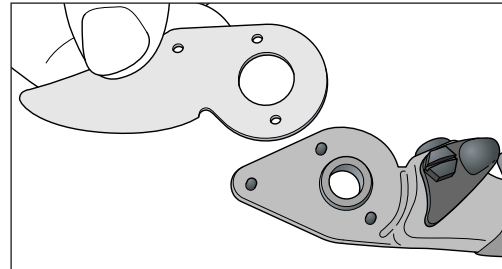


2. Use the included adjustment key to loosen and remove the locking screw.

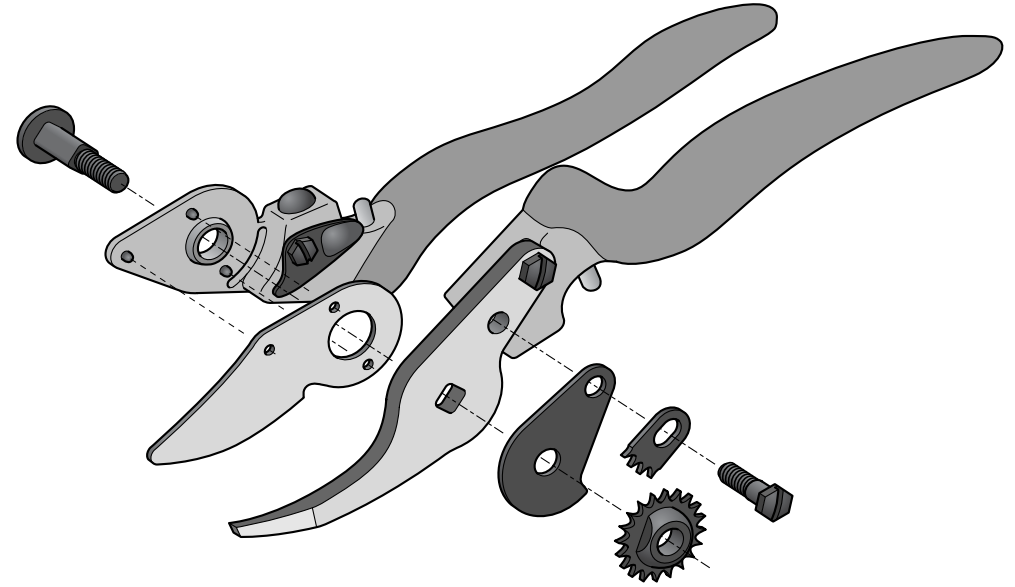


3. Loosen and remove the main nut and bolt, using the adjustment key.

4. Take the pruner apart, keeping all the parts organized for easy reassembly.



5. Insert the new blade and reassemble the pruner. Hold the handles firmly closed while tightening the main nut and locking screw until there is no gap between the blade and the anvil. Reinstall the spring between the handles. Test the operation of the pruner to make sure you have not overtightened the nuts; adjust as required.



Exploded view of pruner assembly.