

# Indoor/Outdoor Standard 12-Volt DC LED Power Supply

Covers models: 100-watt (811004), 150-watt (811503)

**Highly efficient, stabilized, constant voltage DC power for LED lighting**

## INSTALLATION GUIDELINES

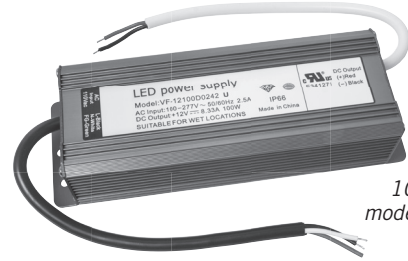
**Power must be disconnected at all times during installation.**

**Observe polarity of the 12-volt DC output. Failure to observe polarity could damage LED lighting.**

**Total wattage of all LED fixtures used must not exceed the maximum watt rating of the power supply.**

These electronic LED power supplies are not compatible with standard 120-volt AC dimmer switches. Use only Armacost Lighting low voltage 12-volt DC LED dimmers for brightness control of lighting.

- Full safety shut off protection in case of lighting overload, open circuit, short circuit, over-temperature or other fault. Unit will automatically restart after the fault has been corrected.
- For dry or wet location use. Allow for ventilation.
- Use only insulated staples or plastic ties to secure cords and wires.
- Route and secure wires so they will not be pinched or damaged.
- All wiring must be in accordance with national and local electrical codes, low voltage Class 2 circuit. For wire runs inside of walls, use properly certified CL2 or better cabling and appropriate mounting hardware. If you are unclear as to how to install and wire this product, contact a qualified electrician. Failure to install this device properly may result in electrical shock or fire.
- Do not install Class 2 low voltage wiring in the same runs as AC main power. If AC and low voltage wires cross, keep them at 90-degree angles.



100-Watt model pictured

Connection to 120-volt AC mains must be inside an approved electrical junction box. When using power supply enclosure (sold separately), route all cables through appropriate 1/2-inch knockouts to fit installation needs, always install suitable strain relief cable clamps.

## SPECIFICATIONS

See model-specific information on your unit's case label

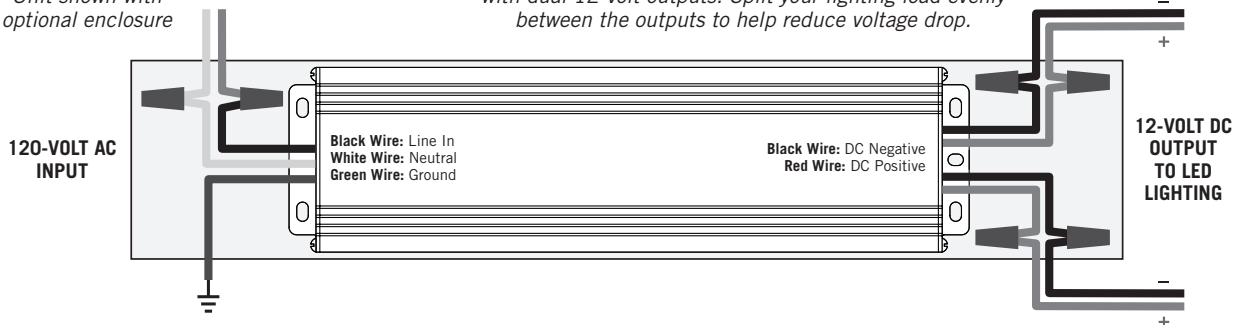
Input voltage.....	100-277-volt AC, 50/60 Hz
Output voltage.....	12-volt DC, constant voltage
Operating temperature .....	-13~+122°F (-25~+50°C)
IP protection .....	IP66
Cooling .....	Free air convection
Safety.....	Over temperature, overload & short-circuit
Typical efficiency.....	91%
100 watt case size.....	210 L x 71.5 W x 45.5mm H
150 watt case size.....	270 L x 71.5 W x 45.5mm H



ROHS compliant & UL Listed, complies with UL8750, EN61347-1, EN61347-2-13

Limited 3-year warranty. Failure to use this power supply for its intended purpose or improper installation will void warranty. Questions? Email [support@armacostlighting.com](mailto:support@armacostlighting.com).

Unit shown with optional enclosure



Note: 150-watt model (shown illustrated) comes with dual 12-volt outputs. Split your lighting load evenly between the outputs to help reduce voltage drop.

## Understanding Voltage Drop

Voltage drop is the gradual decrease in voltage that occurs from your power supply to your LED lighting. Voltage drop only becomes undesirable if you notice the brightness in one area of your lighting is objectionably different than in another area. As a practical approach, test your LED lighting prior to final installation. If voltage drop appears to be an issue, use thicker, heavier gauge wires, change your configuration, or consider adding a second power supply. To learn more visit [armacostlighting.com/voltagedrop](http://armacostlighting.com/voltagedrop) for an easy-to-use online voltage drop calculator.



Power supply shown with indoor rated enclosure

## Enclosure Item Numbers

**Indoor Enclosure:** Armacost item 970004

**Outdoor, wet-location rated enclosure:** Armacost item 970010

All enclosures are either UL, ETL or CSA listed for safety.