



**WATERVILLE WOODCRAFT INC.**  
Table slides, drawer guides, drawers, dimension wood

## **GENERAL INFORMATION**

Waterville Woodcraft manufactures high quality components for the furniture and cabinet industry. Founded in 1969, our company has earned an enviable position in the manufacturing market. The use of state-of-the-art equipment combined with efficient production methods permit us to meet our customer's growing demand. Our wood is dried on site, in our modern 300 MBF capacity buildings, to ensure complete control of our process. Our production equipment includes molders, optimizing saw, panel gluer, dovetailing equipment, UV-CURED flat-line finishing, etc.

*Waterville Woodcraft manufactures the following products:*

- **Wooden table slides;**
- **Wooden drawer guides;**
- **Ready to use dovetail drawer boxes;**
- **Solid wood drawer sides;**
- **Dimension wood;**
- **Frame stock;**
- **Kiln drying;**

We offer reliable service, constant quality and a commitment to work as your partner. Working closely with our customers allows us to establish a solid and long lasting business relationship.

Please do not hesitate to contact us with your specific needs. It will be our pleasure to work with you!

*We are located in Waterville in the province of Quebec, 150 km east of Montreal.*

***Waterville Woodcraft...***  
***your partner for success!***  
sales@watervillewoodcraft.com





**WATERVILLE WOODCRAFT INC.**  
Table slides, drawer guides, drawers, dimension wood

## **TECHNICAL CHARACTERISTICS OF OUR WOODEN TABLE SLIDES**

- We have models for 4 legged tables and for pedestal tables;
- While opening, our slides develop a camber to compensate sagging. For a 4 legged table, the slides will lift the center of the table. A pedestal model will lift the ends of the table to prevent sagging;
- Our slide's exclusive design and construction allow a low friction sliding motion resulting in a smooth and easy operation. We kiln dry our wood to 7 %, eliminating the risk of blockage from warping;
- For pedestal styles, a rack and gear mechanism allows a single person to extend the table. While pulling on one end, the other end opens simultaneously. This mechanism also assures that both panels will stay symmetrical from the pedestal;
- Our slides do not require any shimming on installation. They are shipped predrilled and ready to assemble to your tables.





**WATERVILLE WOODCRAFT INC.**  
Table slides, drawer guides, drawers, dimension wood

## TECHNICAL SPECIFICATIONS OF TABLE SLIDES

<b>Series</b>	200	300	400	500	Special
<b>Sections per slide</b>	2	3	4	5	To be determined
<b>Thickness of side sections</b>	Regular : 7/8'' 22 mm (Reg)		Special : 1'' 25mm (SP)		
<b>Closed length</b>	From 16'' to 52'' From 400 mm to 1300 mm (other lengths available according to models)				
<b>Height</b>	2'' 50 mm	2 3/8'' 60 mm		3'' 75 mm	
<b>Equalizer</b>	None/Single/Double Metal or nylon gears				

*Example:* Series 300 reg - 24'' x 2-3/8'' - Double equalizers.

**Series 300** means there are 3 sections per slide. Standard items range from 2 sections to 5 sections. However other series are less common but possible.

The **reg** refers to "Regular".  
The **SP** alternative refers to special.  
All our center sections are finished at 1" thick (made of 5/4 wood).

SP = All sections finished at 1"  
Reg = Center sections finished at 1",  
side sections at 7/8" (from 4/4 wood)  
(Reg.models are available up to 40")

**24'' x 2-3/8''** means the closed length of the slide is 24" and the height of the slide is 2-3/8".

The most common height is 2-3/8". The 2" models is recommended only for lighter tables. The 3" model was specifically designed for very heavy tables.

**Single equalizer** refers to the fact that only one slide per pair is equalized. **Double equalizers** models have equalizers on both slides. Models with **no equalizer** are usually used for 4 legged tables. Equalizers are available for Series 300 and Series 500.



**WATERVILLE WOODCRAFT INC.**  
Table slides, drawer guides, drawers, dimension wood

### Table 1

Maximum openings for each series  
(Dimensions in inches)

Length of	Series 200	Series 300	Series 300	Series 400	Series 500	Series 500
<i>Centersect.</i>		<i>Equalizers</i>			<i>Equalizers</i>	
16	7	15,75	16	24	31	32
18	8	17,75	18	27	35	36
20	11	19,75	20	30	39	40
22	13	21,75	22	33	43	44
24	15	23,75	24	36	47	48
26	17	25,75	26	39	51	52
28	19	27,75	28	42	55	56
30	21	29,75	30	45	59	60
32	23	31,75	32	48	63	64
34	23	33,75	34	51	67	68
36	24	35,75	36	54	71	72
38	25	37,75	38	57	75	76
40	27	39,75	40	60	79	80
42	28	41,75	42	63	83	84
44	29	43,75	44	66	87	88
46	31	45,75	46	69	91	92
48	32	47,75	48	72	95	96
50	33	49,75	50	75	99	100
52	35	51,75	52	78	103	104

Other series and dimensions available upon request.

A different assembling method can provide slides with wider openings for models without equalizers.

Contact us with your special applications.

*Example : Series 300 (3 sections)*





**WATERVILLE WOODCRAFT INC.**  
Table slides, drawer guides, drawers, dimension wood

## Quote or sample request Wooden table slides

**Company:** \_\_\_\_\_  
**Address:** \_\_\_\_\_  
 \_\_\_\_\_  
**Phone:** \_\_\_\_\_ **Fax:** \_\_\_\_\_  
**Contact:** \_\_\_\_\_

**Table:**    \_\_\_ 4 legged table (not fixed)  
                   (legs move with top)  
           \_\_\_ pedestal table(fixed base)  
           \_\_\_ other  
 Please specify:\_\_\_\_\_

**Table:**    \_\_\_ 4 legged table (not fixed)  
                   (legs move with top)  
           \_\_\_ pedestal table(fixed base)  
           \_\_\_ other  
 Please specify:\_\_\_\_\_

**Opening:**  
 How many leaves:\_\_\_\_\_  
 Width of leaves:\_\_\_\_\_

(We will add 1" of opening per leaf)

**Opening:**  
 How many leaves:\_\_\_\_\_  
 Width of leaves:\_\_\_\_\_

(We will add 1" of opening per leaf)

**Equalizers:**  
 None\_\_\_ Simple\_\_\_ Double\_\_\_  
 Metal gear\_\_\_ or Nylon gear\_\_\_

**Equalizers:**  
 None\_\_\_ Simple\_\_\_ Double\_\_\_  
 Metal gear\_\_\_ or Nylon gear\_\_\_

**Other:**  
 Available space between aprons\_\_\_\_\_

Quantities per order:\_\_\_\_\_pairs

**Other:**  
 Available space between aprons\_\_\_\_\_

Quantities per order:\_\_\_\_\_pairs

**Top of the table:**  
 thickness\_\_\_\_\_ sort of wood\_\_\_\_\_

dimensions\_\_\_\_\_x\_\_\_\_\_

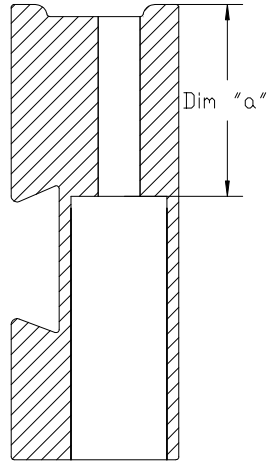
**Top of the table:**  
 thickness\_\_\_\_\_ sort of wood\_\_\_\_\_

dimensions\_\_\_\_\_x\_\_\_\_\_

## **Waterville Woodcraft:**

### **GUIDELINES TO OBTAIN MAXIMUM SERVICE OF YOUR SLIDES**

1. Store in a dry area.
2. Make sure you have the right type of slides: four legged table or pedestal table.
- 3. Under each table, install a right and a left slide (right side is stamped in blue, left side in red).**
4. Use #10 round headed screws, 1 ½" long and threaded on 2/3 of the body. Do not strip the screw.
- 5. When installing the slide, slightly squeeze the parts together to eliminate looseness.**
6. To install the slide, close the table but keep the slide open (½").
- 7. Install your slides parallel to one another and parallel to your table.**
8. For a pedestal table, drill the hole in the slide before you fix it to your center leg.
9. Make sure nothing gets in the way of the equalizers.



Options for Dim "a":

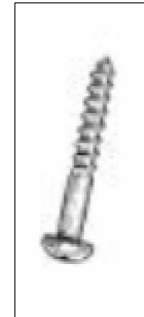
Black gage: 1.025"  $\pm$  0.020"

Blue gage: 1.000"  $\pm$  0.020"

Red gage: 0.950"  $\pm$  0.020"

Yellow gage: 0.835  $\pm$  0.020"

Recommended screw: #10 round headed, 1 1/2" long  
and threaded on 2/3 of the body



**WATERVILLE WOODCRAFT INC.**  
Table slides, drawer guides, drawers, dimension wood

Table slides  
Drilling options for  
side sections