

Appliance Lifter Brackets

These steel brackets are used to support a swing-up shelf that locks in position at working height.

A light pull will automatically lift concealed appliances into working position. No need to fasten your appliances to tray or board. The smooth parallel pull-out motion is eased by robust tension springs.

Maximum recommended load of 44 lb.

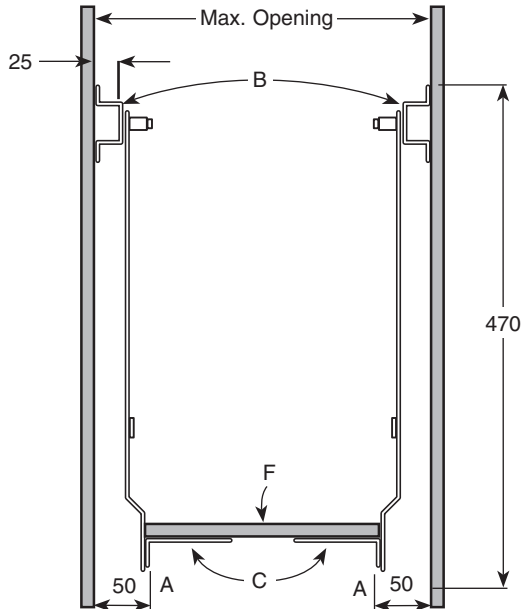


Figure 1

Easy to Mount in any Cabinet or Wardrobe

These appliance lifter brackets consist of two independent scissor hinges that are mounted on cabinet sides with self-tapping screws. Because no connecting rod is required between hinges, the brackets can adapt to any cabinet inside width. Tray or board (F) width should be equal to inside cabinet width, less the overall hinge dimensions (A – Figure 1).

Note Before You Begin:

It's normal for the brackets to appear uneven out of the box or during the early stages of installation. Once they are fully installed, the mechanism is designed to self-correct and ensure proper alignment and function.

Mounting Instructions

Install the hinge mounting plates (B – Figure 3) onto cabinet sides. Make sure to adhere to dimension H (Figure 2) to ensure tray or board will be swung exactly in front of the work surface. Screw tray or board (F – Figures 4 and 5) onto shelf supports (C) while hinges are kept horizontal and open to keep mechanism parallel. Pull lightly to lift and lock the cabinet tray or board into working position. The spring (G) ensures that the double-snap hooks remain securely fastened. To lower the appliance, simply lift the tray or board to release the locking mechanism, then lower it into the cabinet.

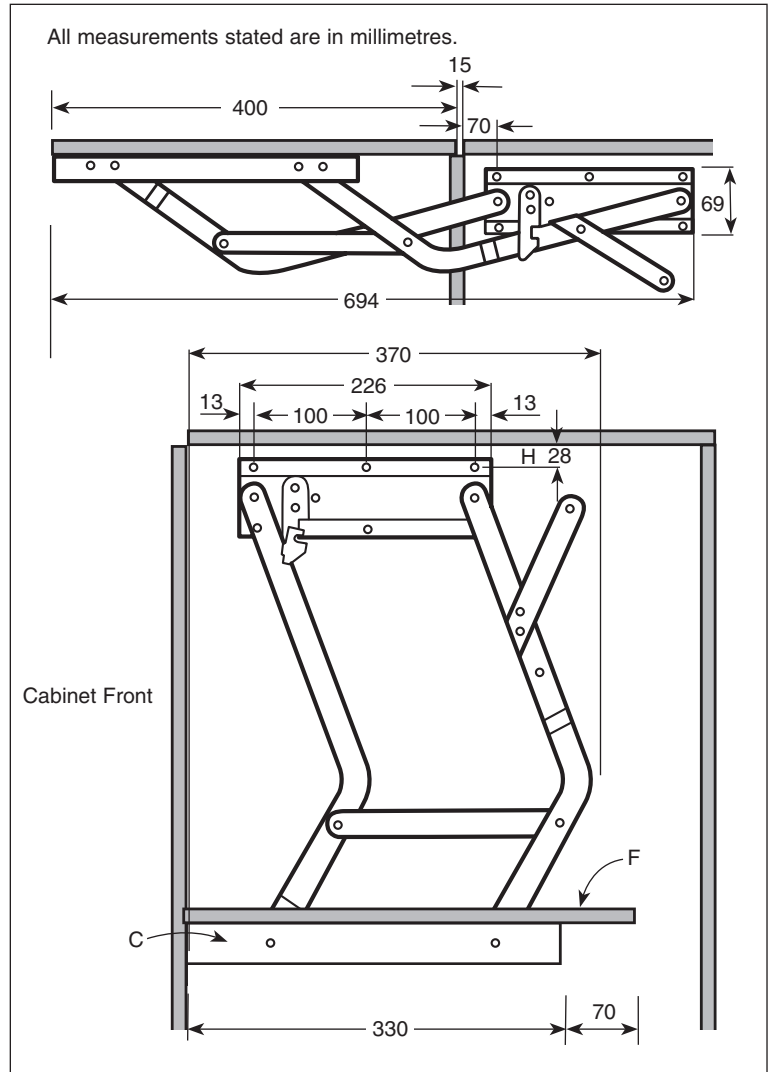


Figure 2

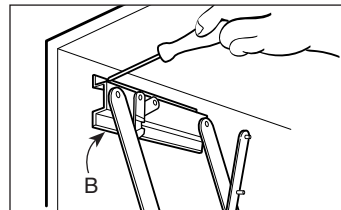


Figure 3

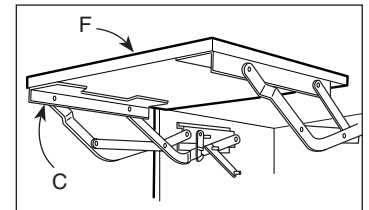


Figure 4

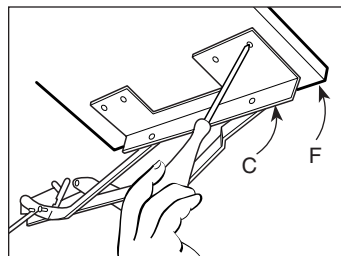


Figure 5

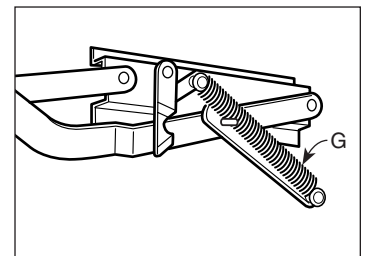


Figure 6